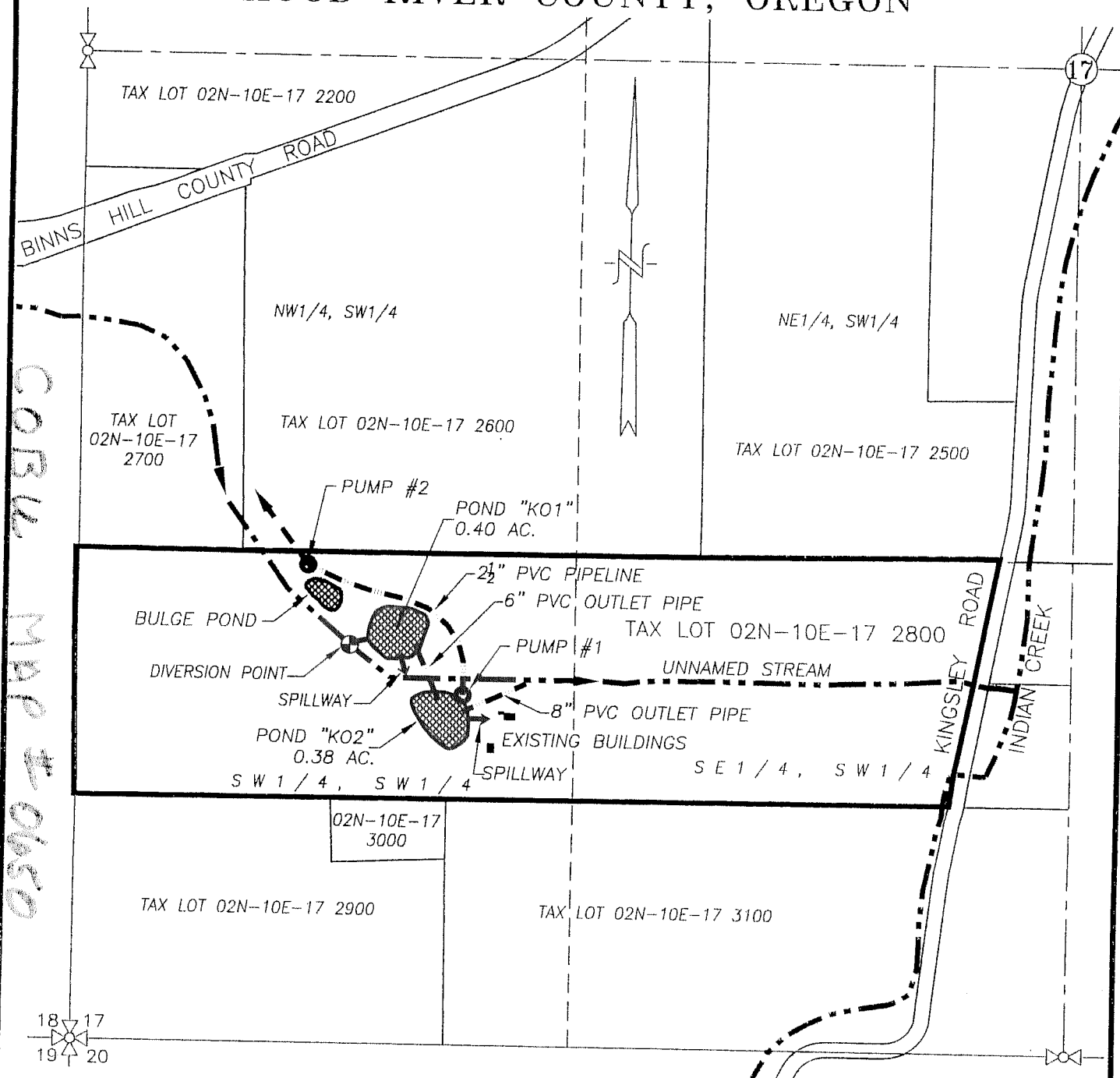






0650

SW1/4, SECTION 17, TWP.2 N. RANGE 10 E. W.M. HOOD RIVER COUNTY, OREGON



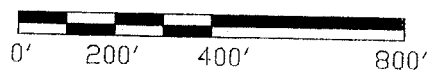
CORBU MAP # 0650

LEGEND :

-  DIVERSION POINT: 1068' NORTH & 720' EAST OF SW CORNER SECTION 17
- POND KO1: (OUTLET) 1,055' NORTH & 905' EAST OF SW COR. SECTION 17
- POND KO2: (OUTLET) 900' NORTH & 1,035' EAST OF SW COR. SECTION 17
-  POND SURFACE AREA
-  IRRIGATION MAIN
-  STREAM WITH DIRECTIONAL FLOW

CLAIM OF BENEFICIAL USE MAP

SCALE: 1" = 400'



RECEIVED
WATER RESOURCES
SALAL OREGON