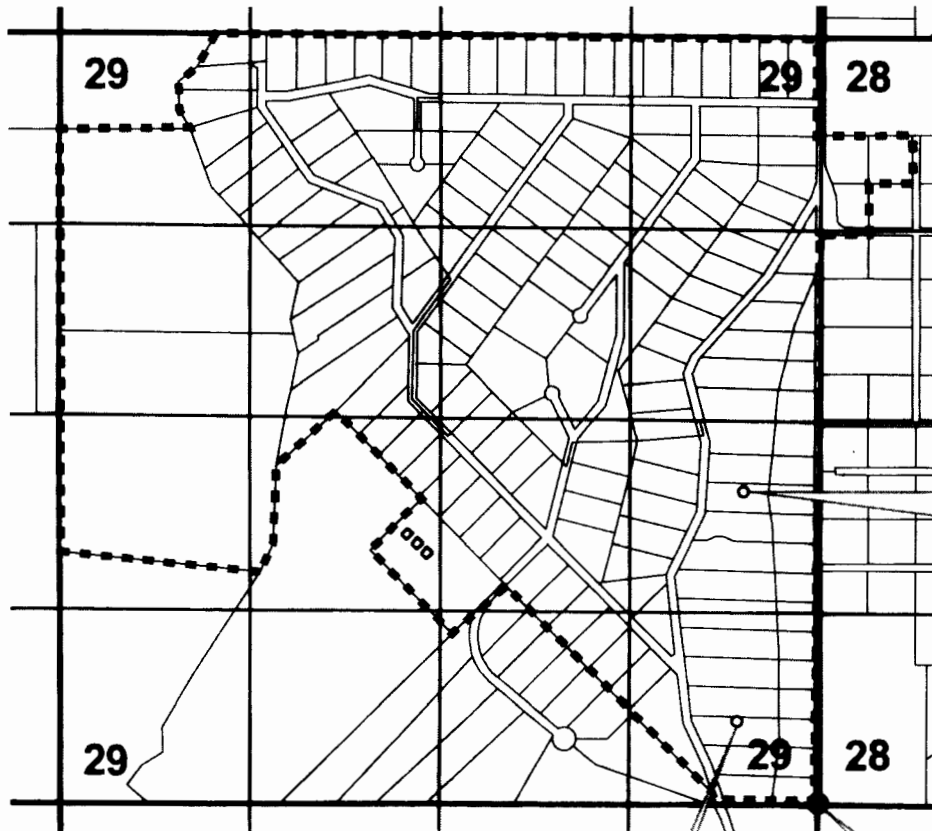


0 660 1,320 2,640 3,960 5,280 Feet  
 1" = 1320'



CROOK COUNTY, OREGON  
**T 15 S, R 16 E, WM  
 SECTIONS 28 & 29**

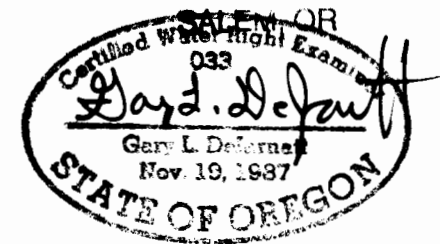


- CISTERNS
- WELLS
- TAX LOTS
- QUARTER - QUARTERS
- SECTION BOUNDARIES
- PLACE OF USE QUASI-MUNICIPAL

WELL #3 WITH METER  
 2150' N, 520' W FROM  
 SE CORNER

RECEIVED BY CWRD

JUN 28 2013



WELL #4 WITH METER  
 600' N, 570' W FROM  
 SE CORNER

SE CORNER

RENEWAL DATE 12-31-2013

**CLAIM OF BENEFICIAL USE MAP for  
 HIGHLAND SUBDIVISION WATER DIST.  
 AP G-15042 / PERMIT G-15778**

NOTE: THIS MAP IS NOT INTENDED TO  
 PROVIDE LEGAL DIMENSIONS OR LOCATIONS  
 OF PROPERTY OWNERSHIP LINES.

**WATER RIGHT SERVICES, LLC**  
 PO BOX 1830, BEND, OR 97709  
**WWW.OREGONWATER.US**

PROJECT # 13020

JUNE 13, 2013

541-389-2837

JOHNSHORT@USA.COM