

RECEIVED

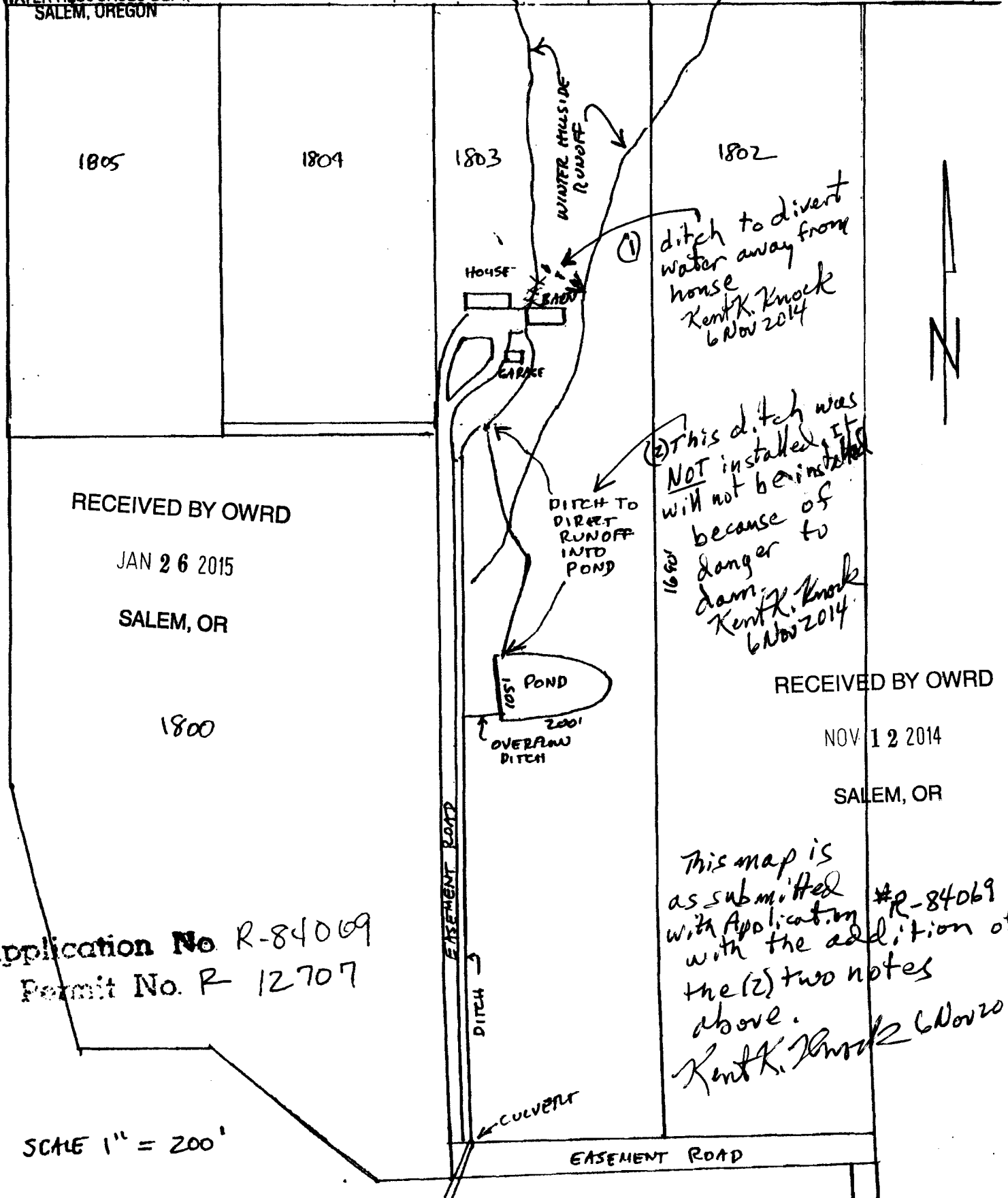
BLM

36S-4W-SEC 04

FEB 18 1999

SW 1/4 NE 1/4
T47N R10E S1803

WATER RESOURCES DEPT.
SALEM, OREGON



RECEIVED BY OWRD

JAN 26 2015

SALEM, OR

1800

RECEIVED BY OWRD

NOV 12 2014

SALEM, OR

Application No R-84069
Permit No. R 12707

This map is as submitted with Application #R-84069 with the addition of the (2) two notes above.
Kent K. Knock 6 Nov 2014

SCALE 1" = 200'