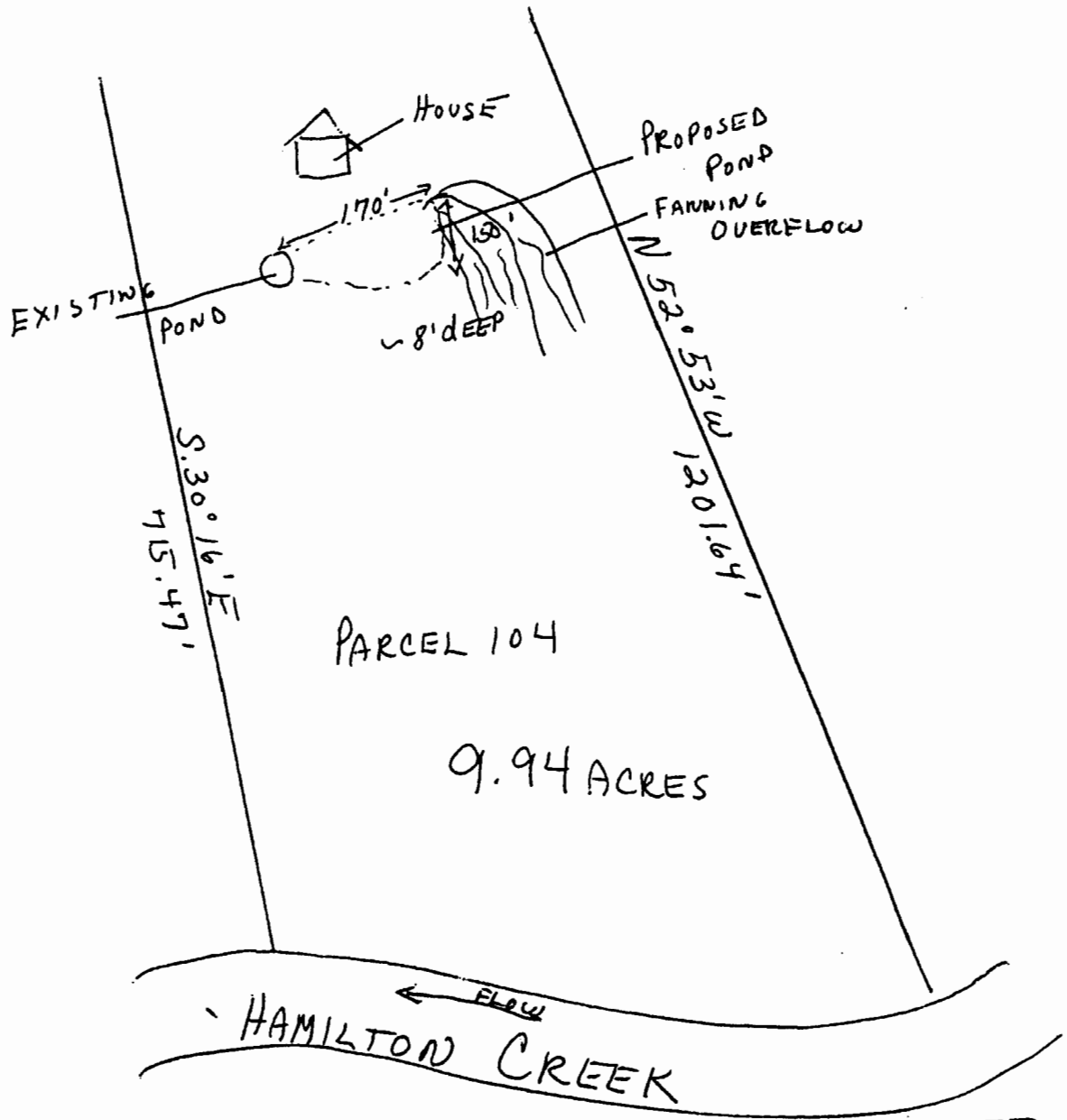
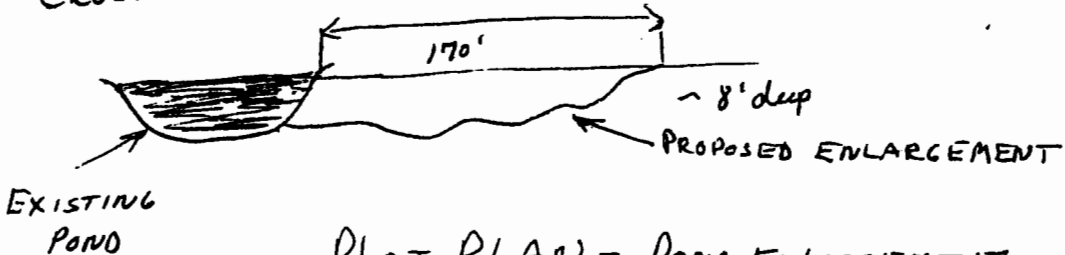


TOP VIEW



Cross Section



RECEIVED

DEC 23 2014

WATER RESOURCES DEPT
SALEM, OREGON

DAVID AND
PHYLLIS COPELAND

SHEET 1 OF 1

PLOT PLAN - POND ENLARGEMENT
 PARCEL 104 - PORTION OF NE 1/4
 Sec 30 T12 S. R.1 E.
 LINN COUNTY, OREGON