

C. 9038

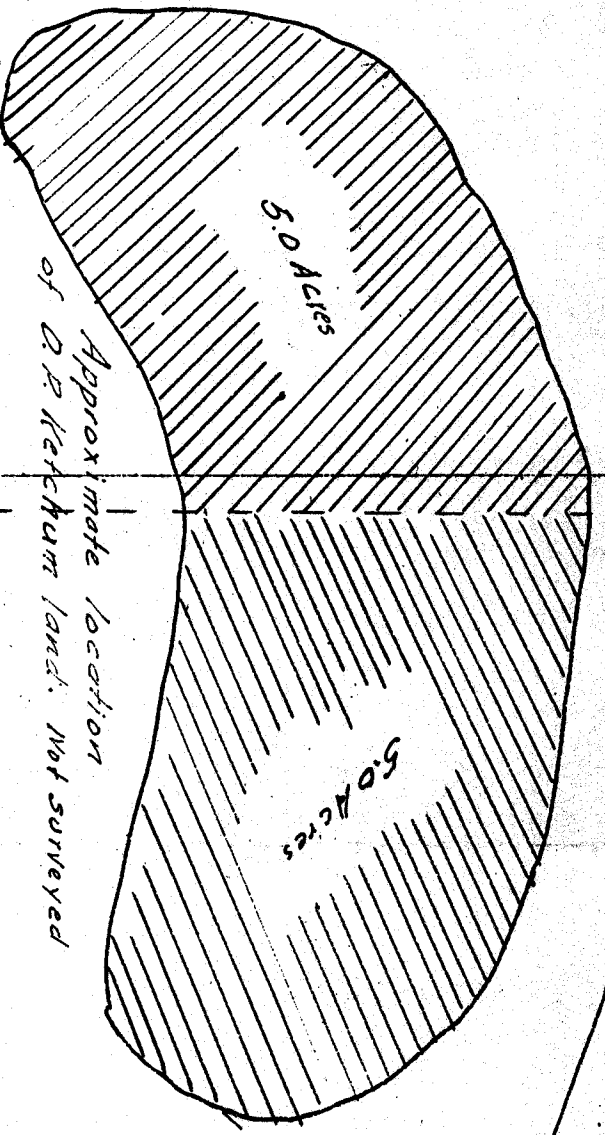
Map Accompanying
Curtiss & Ketchum Application
for Permit to appropriate Water
Scale 1" = 200'

Sec. 4

Approximate location

S. E. $\frac{1}{4}$, N. E. $\frac{1}{4}$ Sec. 4

of Spring branch 2



Approximate location
of D.P. Ketchum land. Not surveyed

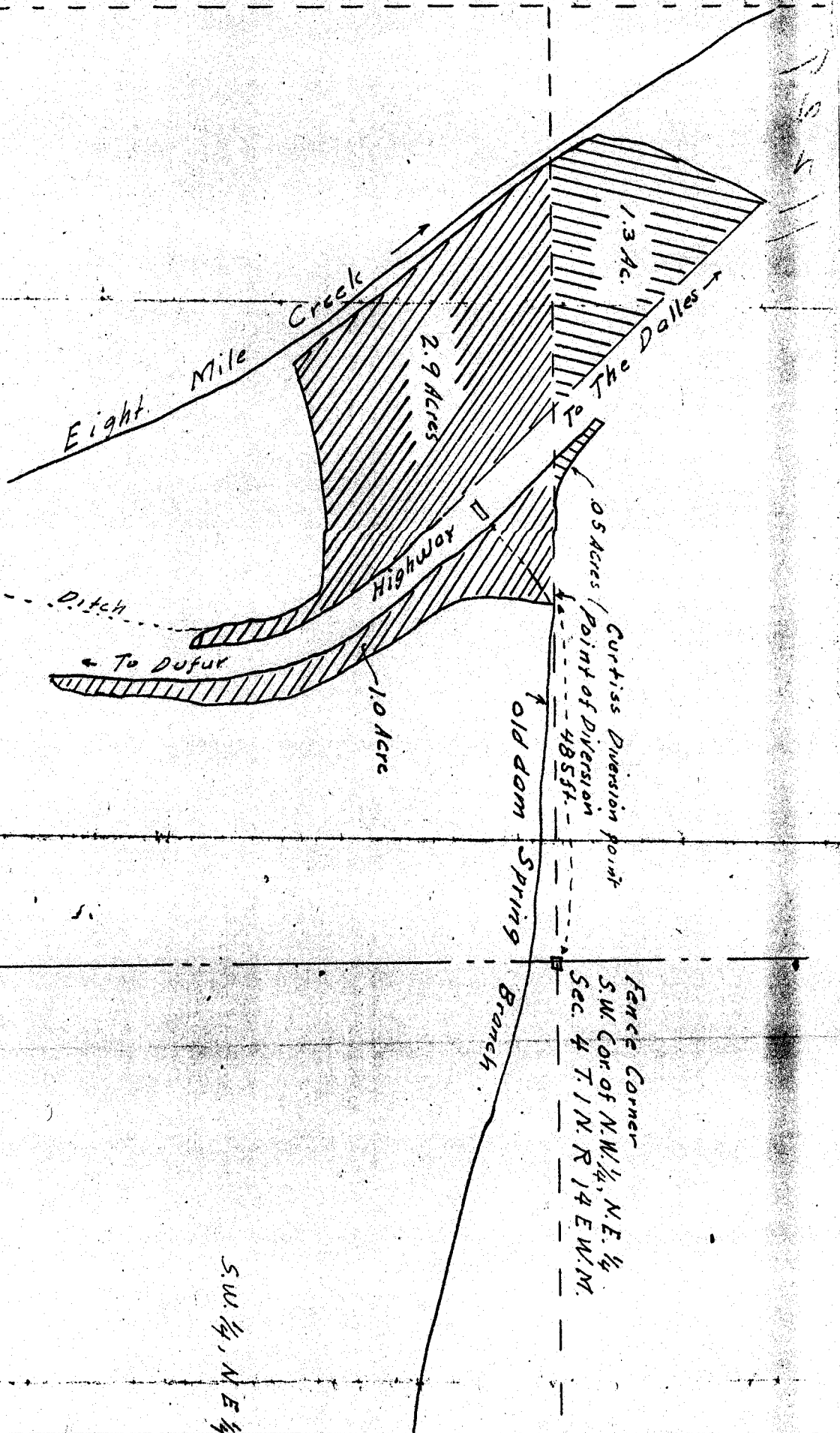
Approximate location
of Ketchum Ditch

1/4 COR. behu
not found

11000

L. W. Curtiss land located from Stodis
Survey Aug. 18-1926

S.E. 1/4, N.W. 1/4 Sec. 4



S.W. 1/4, N.E. 1/4

Center of Sec. 4 T.1N. R.14 E.