

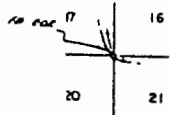
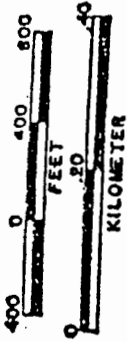
RECEIVED

DEC 23 1000

WATER RESOURCES DEPT.
SALEM, OREGON

RECEIVED
APR 18 1994
DEPT. OF ZONING & PLANNING DIV
SALEM, OREGON

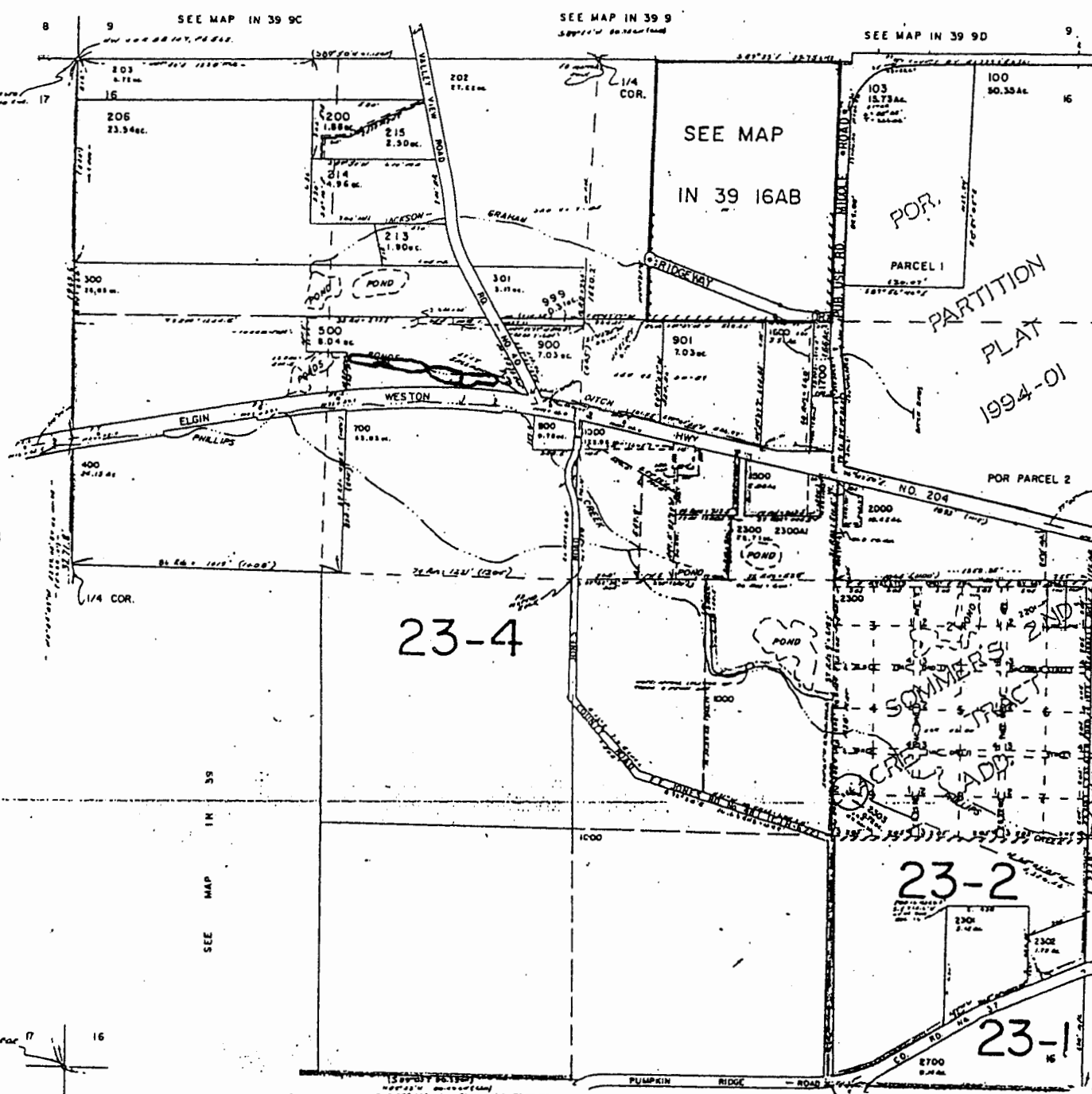
SCALE 1:9600



SEE MAP IN 39

SEE MAP IN 39

THIS MAP WAS PREPARED FOR
ASSESSMENT PURPOSE ONLY.



23-4

23-2

23-1

UNION COUNTY

1" = 400'

UNION

SEE MAP IN 39 9C

SEE MAP IN 39 9

SEE MAP IN 39 9D

CO RD NO. 4

CANCELLED NO.	101	102	201
	801	802	803
	1100	1200	
	1201	1300	
	1400	1501	
	1701	1800	
	1900	2100	
	2200	2400	
	2401	2402	
	2500	2600	
	600	2000A1	
	204		
	205		
	207		

Application No. R-84316
Permit No. R-12890

RECEIVED BY OWNER
MAY 25 2005
SEE MAP IN 39 15

RECEIVED
MAY 25 2005
SALEM, OR

ELGIN