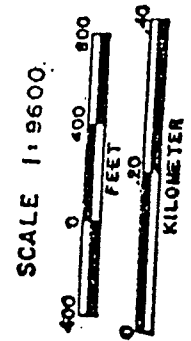


THIS MAP WAS PREPARED FOR ASSESSMENT PURPOSE ONLY.

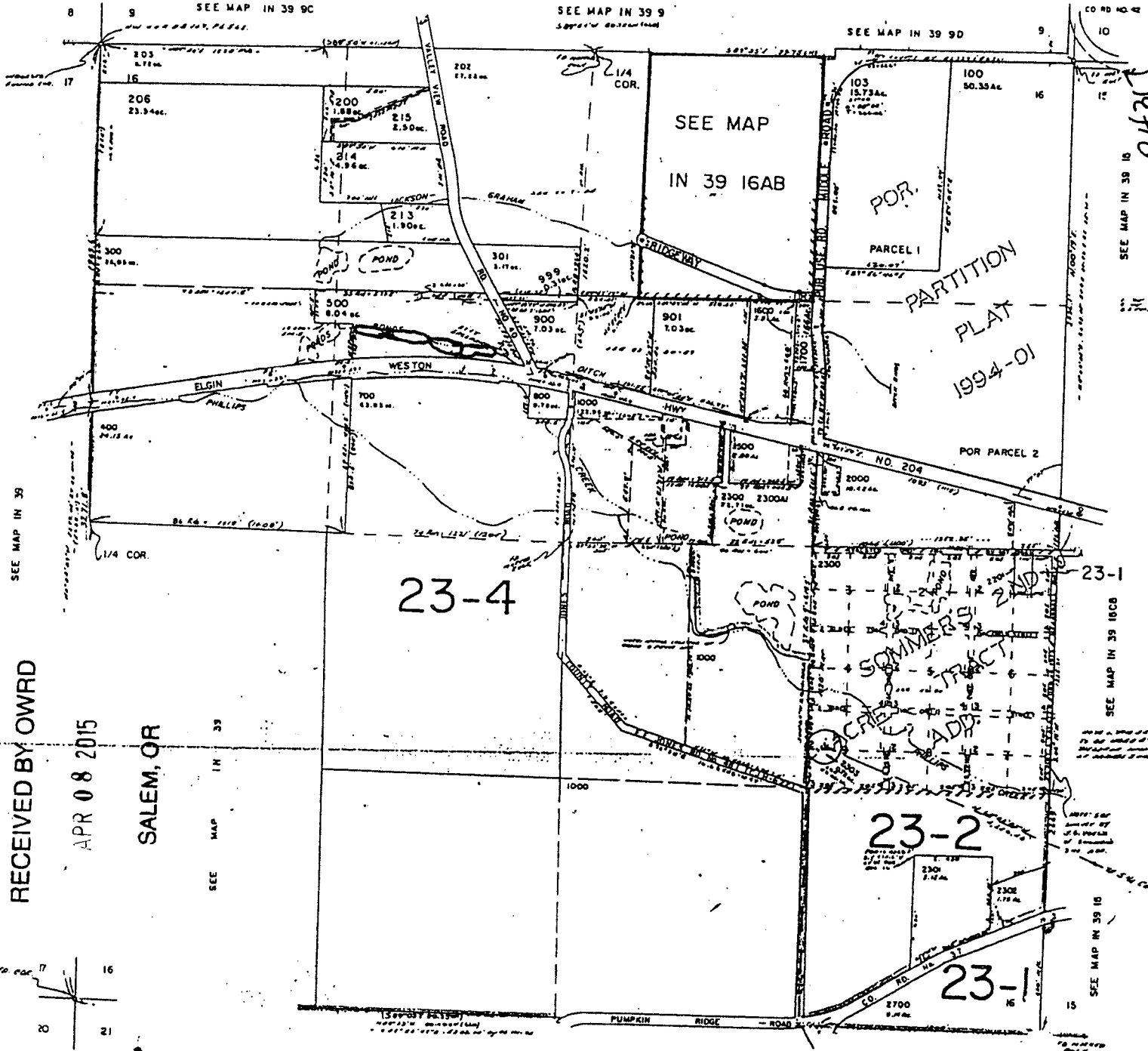
CANCELLED NOS.	
101	1002
102	201
801	802
803	1100
1201	1300
1400	1501
1701	1800
1900	2100
2200	2400
2401	2408
2500	2600
2600	2608
2000	2000



RECEIVED
 APR 18 1994
 DEPT. OF LAND USE DIVISION
 DEPT. OF LAND USE DIVISION

RECEIVED
 DEC 23 1000
 WATER RESOURCES DEPT.
 SALEM, OREGON

RECEIVED BY OWRD
 APR 08 2015
 SALEM, OR



Application No. R-8431
 Permit No. R-12891

