

SECTION 18 T.32S. R.4W. W.M. 3
DOUGLAS COUNTY

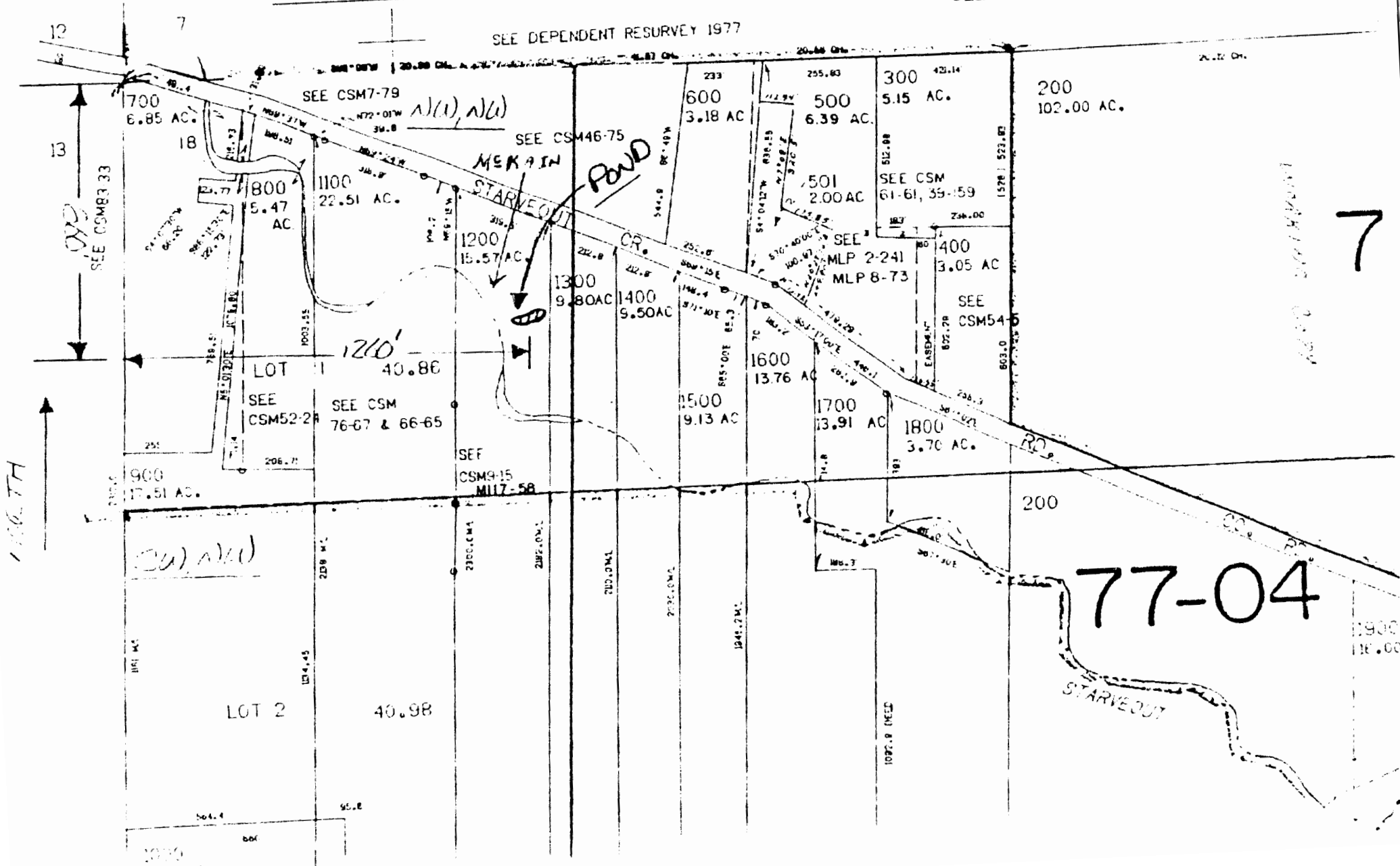
1"=400'

MAP WAS PREPARED FOR
ASSESSMENT PURPOSE ONLY.

POND IS 860' SOUTH
& 1260' EAST OF NE
CORNER OF SECTION 18

SEE MAP 32 4 7

SEE DEPENDENT RESURVEY 1977



7

77-04