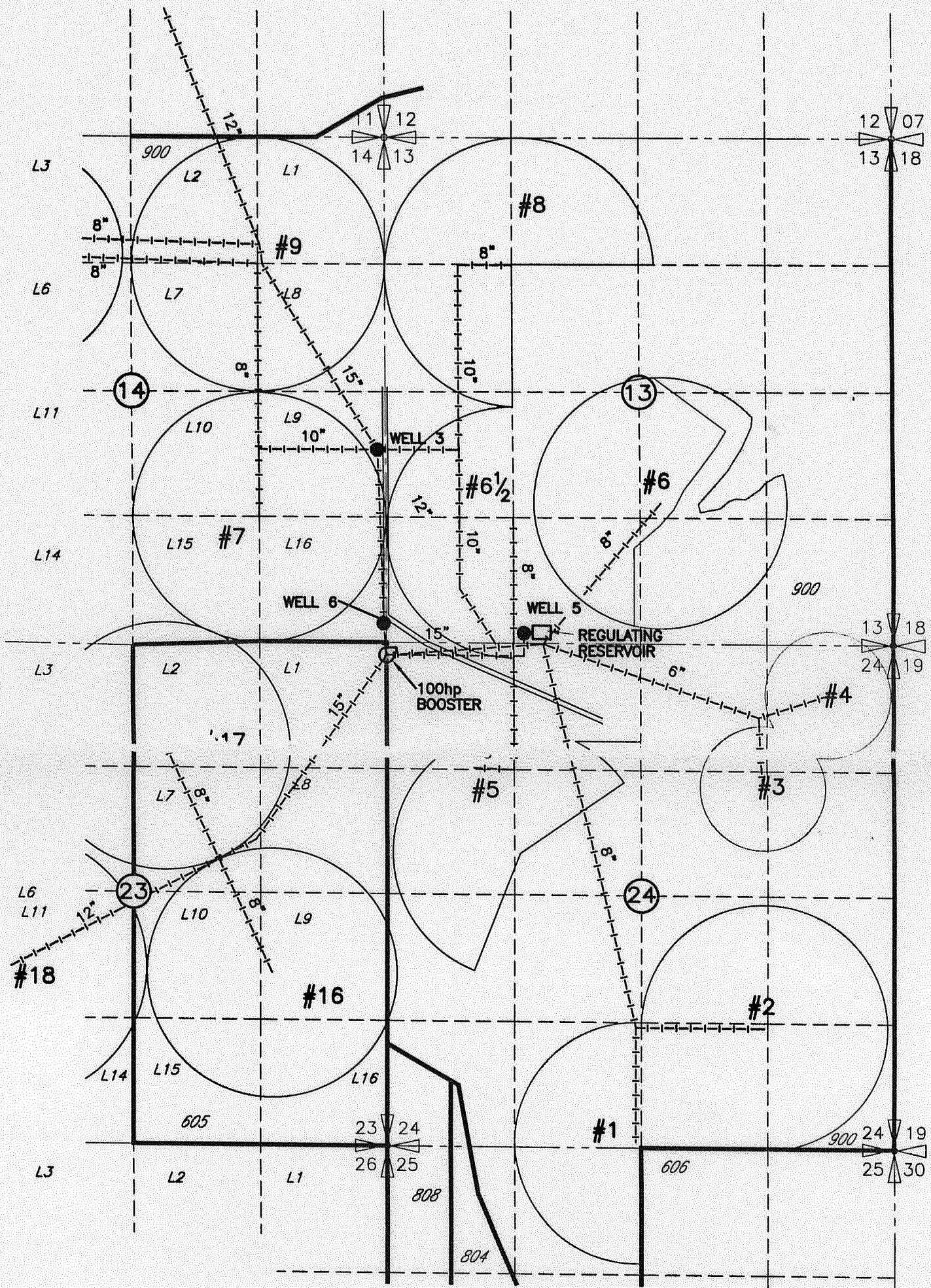


FINAL PROOF MAP
 OF TRANSFER T-6985
 for MONTY CRUM
 T 1 S, R 22 E, W.M.



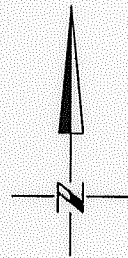
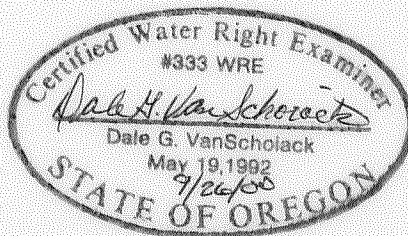
#18 CIRCLE NUMBERS
 (605) TAX LOT NUMBERS
 L10 GOV'T LOT NUMBERS

RECEIVED

SEP 28 2000

WATER RESOURCES DEPT.
 SALEM, OREGON

WELL NO.3
 LOCATED 540' S AND 10' W FROM THE
 E 1/4 CORNER SECTION 14
 WELL NO.5
 LOCATED 100' N AND 1450' E FROM THE
 SW CORNER SECTION 13
 WELL NO.6
 LOCATED 200' N AND 30' W FROM THE
 SE CORNER SECTION 14



0 1320 2640
 SCALE IN FEET

NOTE:
 THE PURPOSE OF THIS MAP IS TO IDENTIFY THE APPROXIMATE LOCATION
 OF THE WATER RIGHT. IT IS NOT INTENDED TO PROVIDE INFORMATION
 RELATIVE TO THE LOCATION OF PROPERTY OWNERSHIP BOUNDARY LINES.