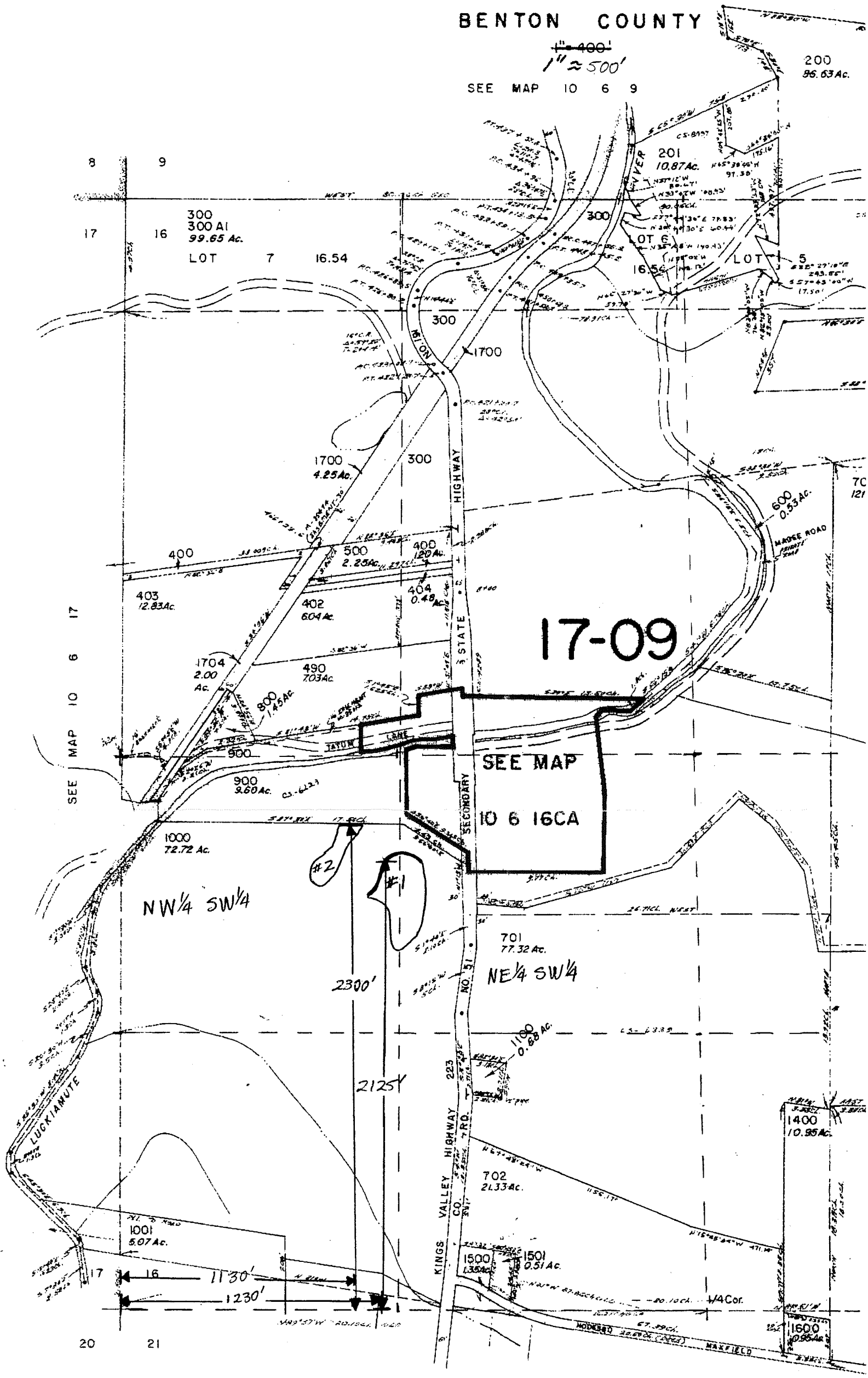


SECTION 16 T.10S. R.6W. W.M.
BENTON COUNTY



SEE MAP 10 6 21

Center of Dam for Pond #1 is located 1230' E + 2125' N from SW corner of Sec. 16
Center of Dam for Pond #2 is located 1130' E + 2300' N from SW corner of Sec. 16

RECEIVED

JUL 02 2002

WATER RESOURCES DEPT.
SALEM, OREGON

Application No. R-84824
Permit No. R-13372

Agree with those measurements.

Chase
6/26/02