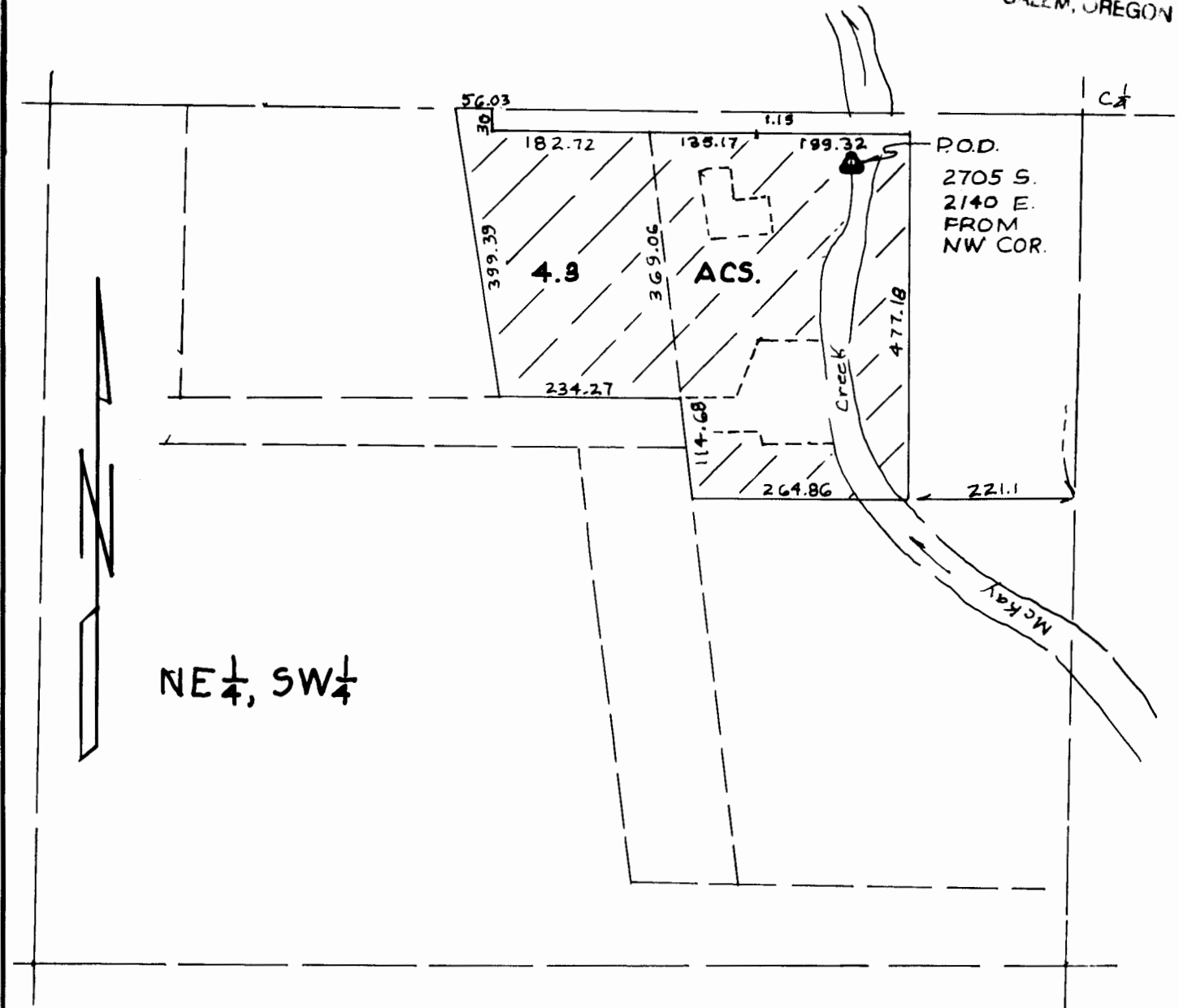


RECEIVED

OCT 02 2000

WATER RESOURCES DEPT.
SALEM, OREGON



NE 1/4, SW 1/4

KRUMBEIN ENGINEERING LTD.
 ENGINEERS — SURVEYORS — PLANNERS
 361 S.E. Second Pentagon, Oregon

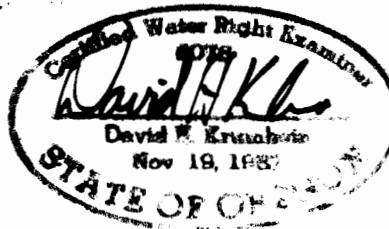
Scale
1" = 200'
Date
9-27-00

Drn. By
DHK
Ckd. By

Drng. No.
0032A
Job No.
9951

Revision 1
Revision 2

FINAL PROOF MAP
 LONGGOOD
 NE 1/4, SW 1/4, SECTION 21
 T. 2 N., R. 32 E. W.M.
 UMATILLA COUNTY, OR.



T-7665

RENEWS 6/30/01