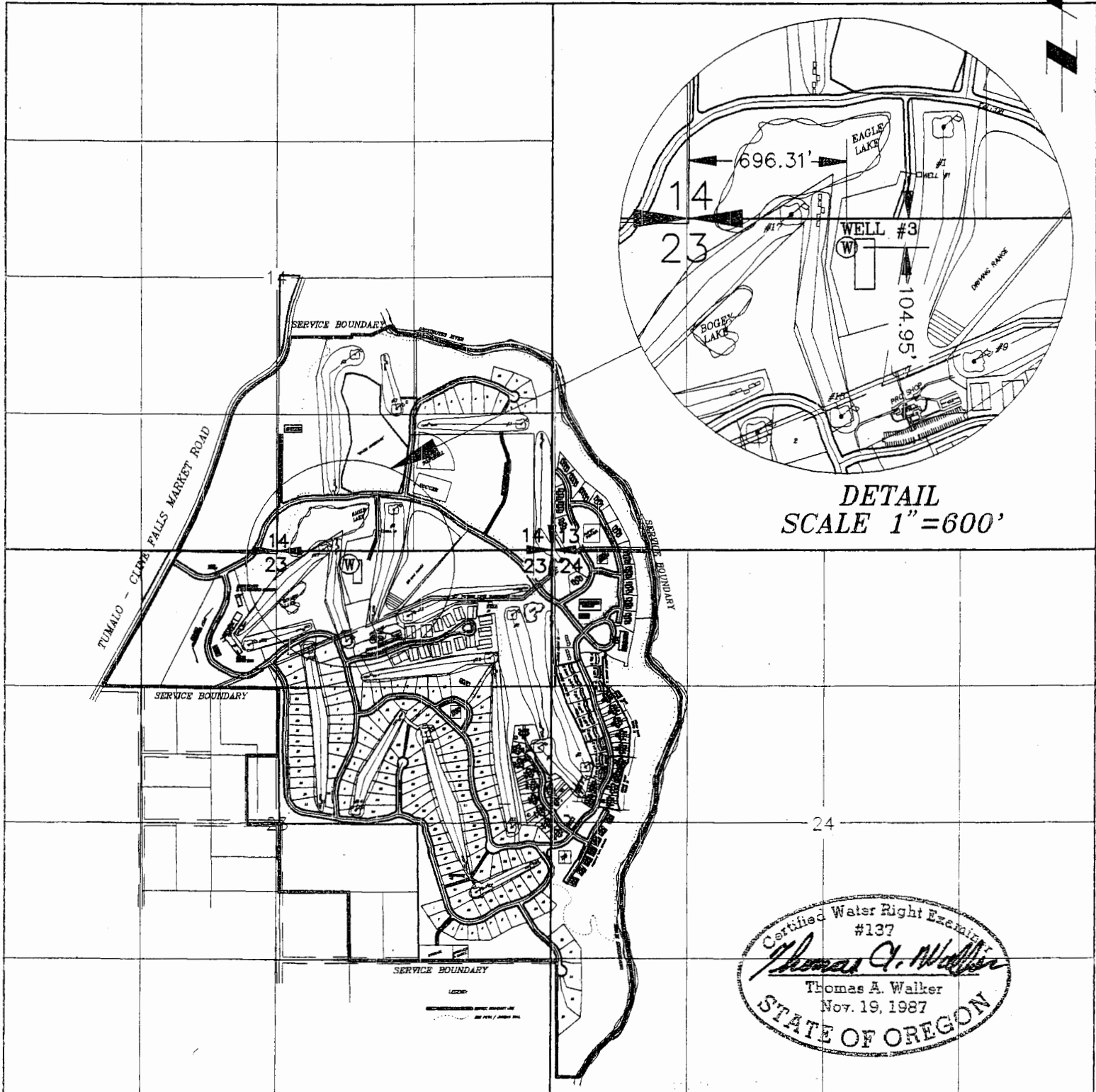


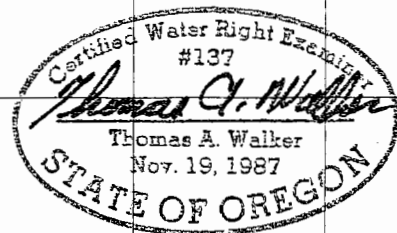
# EAGLE CREST FINAL PROOF SURVEY

PREPARED 09/14/93

T. 15 S, R12 E W.M.  
DESCHUTES COUNTY



DETAIL  
SCALE 1" = 600'



APPLICATION NO. G-11824 PERMIT NO. G-10957

SCALE: 1" = 1320'

**W&H PACIFIC**  
 155 N.E. REVERE  
 BEND, OREGON 97701  
 (503) 388-4255  
 ENGINEERING • PLANNING • SURVEYING • LANDSCAPE ARCHITECTURE

LEGEND  
 (W) WELL LOCATION

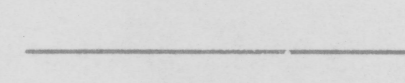
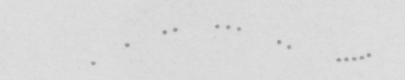
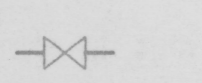
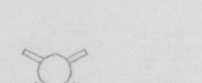
BASE MAP  
 PREPARED BY: HICKMAN, WILLIAMS & ASSOCIATES, INC.  
 20360 EMPIRE ROAD, SUITE C-4  
 BEND, OREGON 97701

# EAGLE CREST AS-BUILT WATER PLAN

PREPARED BY W & H PACIFIC  
PREPARED 7/1/93



### LEGEND:

-  WATER LINE
-  BIKE PATH / JOGGING TRAIL
-  WATER VALVE
-  FIRE HYDRANT

### GRAPHIC SCALE

