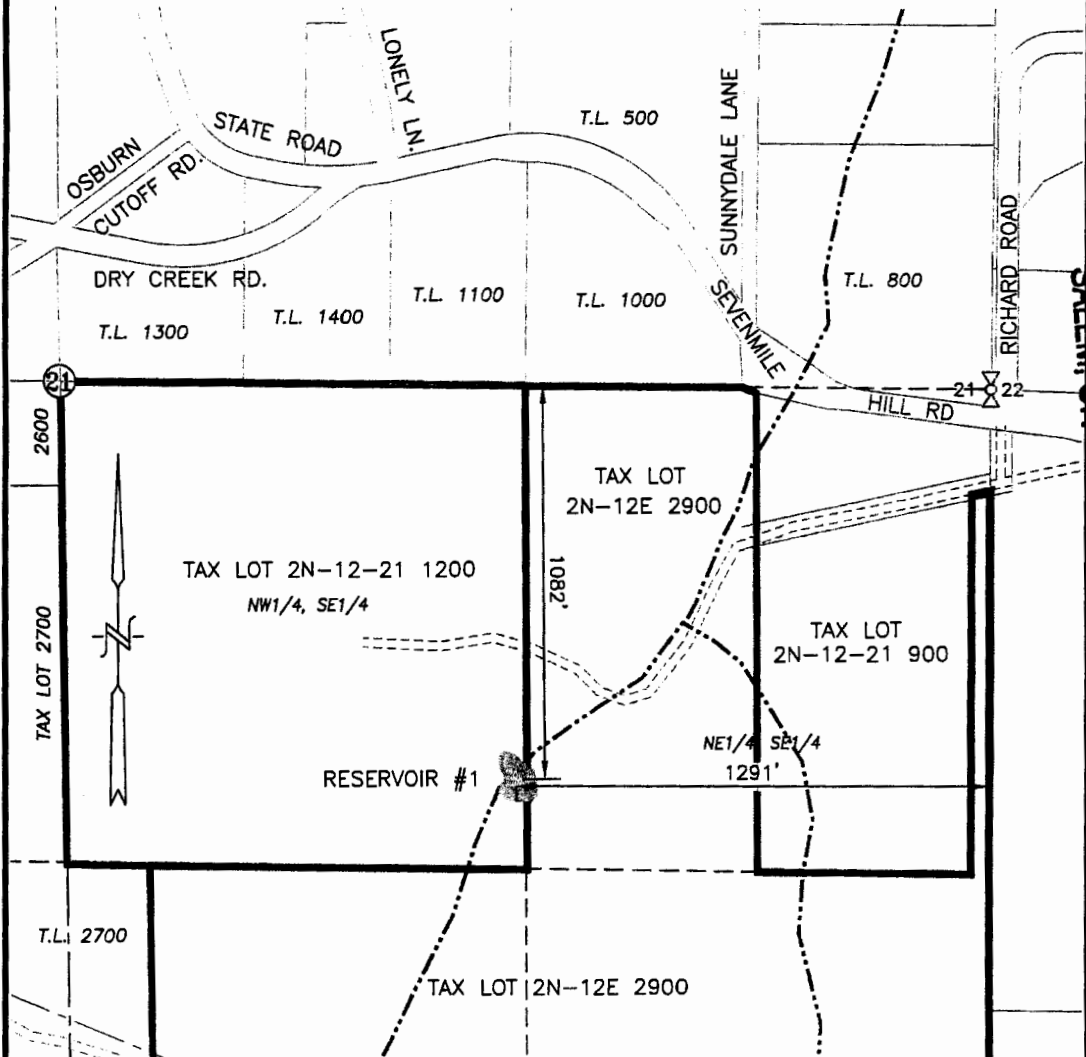


to WRD

SECTION 21, TWP. 2^N S. RANGE 12 E. W.M.
WASCO COUNTY, OREGON

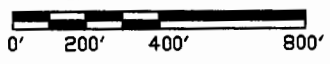


LEGEND:

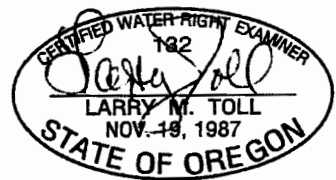
- RESERVOIR No. 1
- STREAM WITH DIRECTIONAL FLOW

CLAIM OF BENEFICIAL USE MAP

SCALE: 1" = 400'



APPLICATION No. R-83970
 PERMIT No. R-12640
 IN THE NAME OF:
KEN THOMAS
 DATE: JUNE 16, 2014



EXPIRES: 06/30/2016

BY: **TENNESON ENGINEERING CORP.**
 3775 CRATES WAY
 THE DALLES, OREGON. 97058
 PH. 541-296-9177
 FAX 541-296-6657



NOTE:
 "THIS MAP IS NOT INTENDED TO PROVIDE DIMENSIONS OR LOCATIONS OF PROPERTY OWNERSHIP LINES."

W.O. #14357wr(R-1)

RECEIVED BY OWRD
 JUL 16 2014