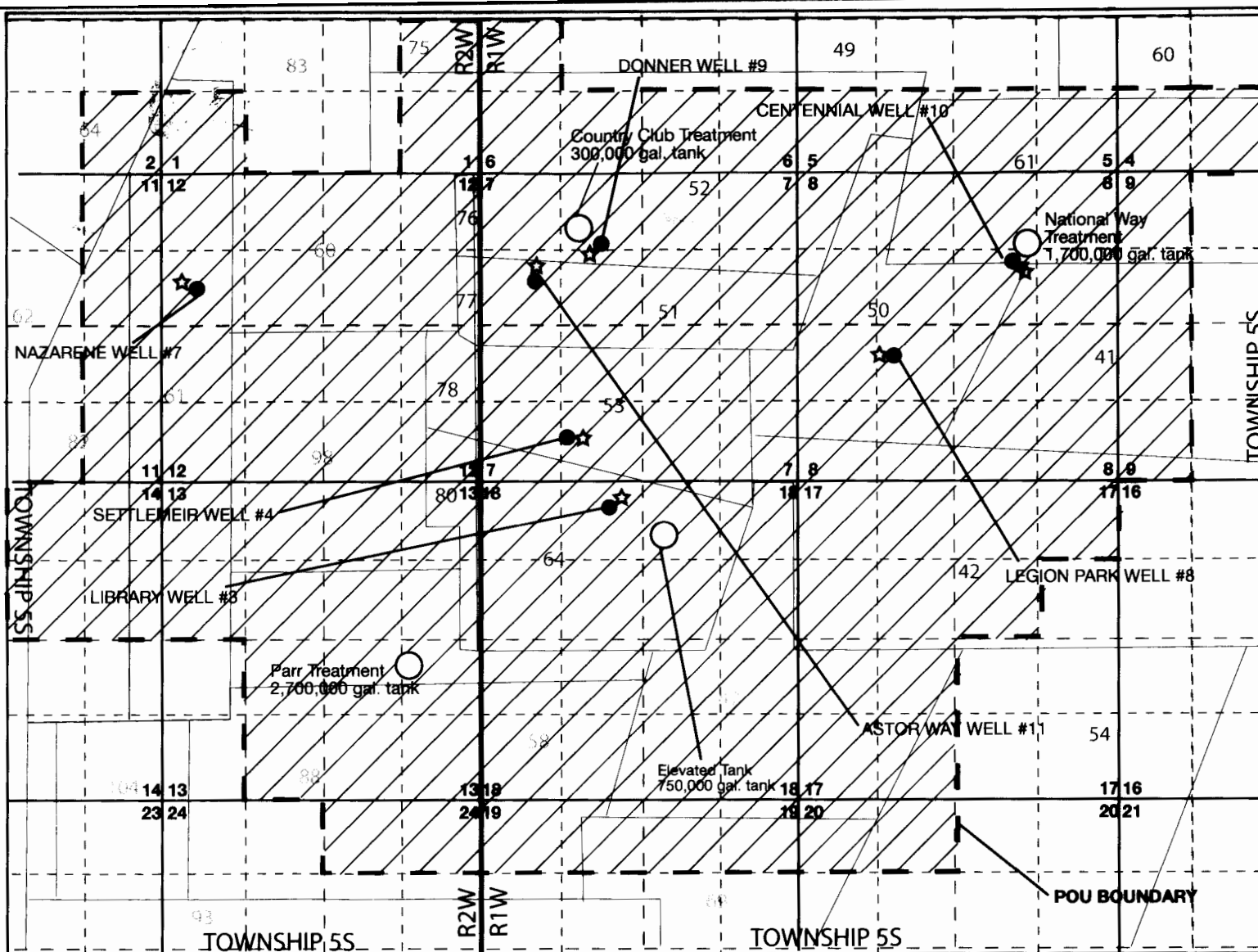


CLAIM OF BENEFICIAL USE MAP
 Transfer T-7656
 for changes in POA and POU of certificates
 36537, 36538 and 56379 in the name of:
 City of Woodburn
 Marion County, OR



WELL COORDINATES

Library Well #3 - NE ¼ NW ¼,
 Section 18, T5S, R1W W.M.;
 390 feet south and 2100 feet
 east of the NW corner of
 Section 18

Settlemier Well #4 - SE ¼ SW ¼,
 Section 7, T5S, R1W, W.M.; 780 feet
 north and 1,420 feet east from the
 SW corner of Section 7

Legion Park Well #8 - NE ¼ SW ¼,
 Section 8, T5S, R1W, W.M.;
 2250 feet north and 1590 feet east
 from the SW corner of Section 8

Centennial Well #10 - SW ¼ NE ¼,
 Section 8, T5S, R1W, W.M.;
 1200 feet north and 1720 feet west
 from the E¼ corner of Section 8

Astor Way Well #11 - SW ¼ NW ¼,
 Section 7, T5S, R1W, W.M.;
 1840 feet south and 920 feet east
 from the NW corner of Section 7

Donner Well #9 - NE ¼ NW ¼,
 Section 7, T5S, R1W, W.M.;
 1200 feet south and 1980 feet east
 of the NW corner of Section 7

Nazarene Well #7 - SW ¼ NW ¼,
 Section 12, T5S, R2W, W.M.;
 2000 feet south and 540 feet east
 of the NW corner of Section 12.

Disclaimer:
 This map is not intended to provide legal dimensions or
 locations of property ownership lines

ROGER N. SMITH ASSOCIATES, INC.
 Groundwater and Environmental Consultants



Date Revised: 12/5/14

Project #1009

LEGEND

| | |
|--------------------|---------------------------|
| ☆ Flow Meter | ▨ POU (city service area) |
| ○ Storage Tanks | --- POU Boundary |
| ● City Wells (POA) | — DLC Boundary |

Scale: 1" = 2,640'



EXPIRATION DATE: 6-30-15