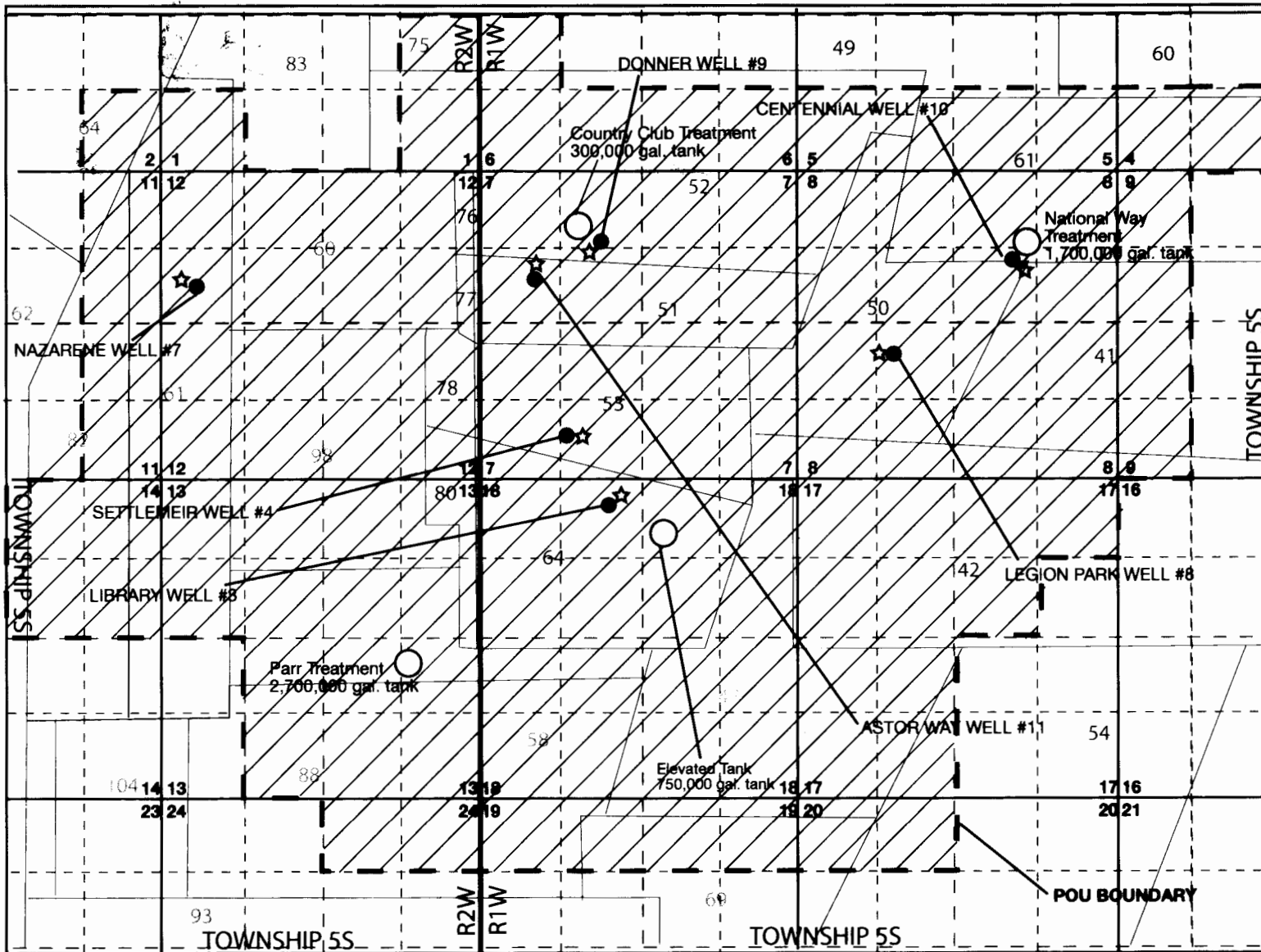


**CLAIM OF BENEFICIAL USE MAP**  
 Transfer T-7656  
 for changes in POA and POU of certificates  
 36537, 36538 and 56379 in the name of:  
 City of Woodburn  
 Marion County, OR



**WELL COORDINATES**

Library Well #3 - NE ¼ NW ¼,  
 Section 18, T5S, R1W, W.M.;  
 390 feet south and 2100 feet  
 east of the NW corner of  
 Section 18

Settlemier Well #4 - SE ¼ SW ¼,  
 Section 7, T5S, R1W, W.M.; 780 feet  
 north and 1,420 feet east from the  
 SW corner of Section 7

Legion Park Well #8 - NE ¼ SW ¼,  
 Section 8, T5S, R1W, W.M.;  
 2250 feet north and 1590 feet east  
 from the SW corner of Section 8

Centennial Well #10 - SW ¼ NE ¼,  
 Section 8, T5S, R1W, W.M.;  
 1200 feet north and 1720 feet west  
 from the E¼ corner of Section 8

Astor Way Well #11 - SW ¼ NW ¼,  
 Section 7, T5S, R1W, W.M.;  
 1840 feet south and 920 feet east  
 from the NW corner of Section 7

Donner Well #9 - NE ¼ NW ¼,  
 Section 7, T5S, R1W, W.M.;  
 1200 feet south and 1980 feet east  
 of the NW corner of Section 7

Nazarene Well #7 - SW ¼ NW ¼,  
 Section 12, T5S, R2W, W.M.;  
 2000 feet south and 540 feet east  
 of the NW corner of Section 12.

Disclaimer:  
 This map is not intended to provide legal dimensions or  
 locations of property ownership lines

ROGER N. SMITH ASSOCIATES, INC.  
 Groundwater and Environmental Consultants



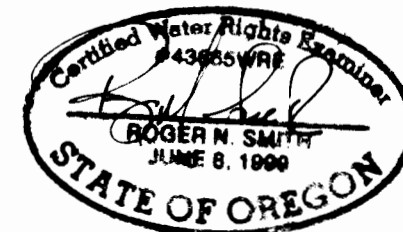
Date Revised: 12/5/14

Project #1009

**LEGEND**

★ Flow Meter	▨ POU (city service area)
○ Storage Tanks	--- POU Boundary
● City Wells (POA)	— DLC Boundary

Scale: 1" = 2,640'



EXPIRATION DATE: 6-30-15