

RECEIVED

DEC 27 1999

WATER RESOURCES DEPT
SALEM, OREGON

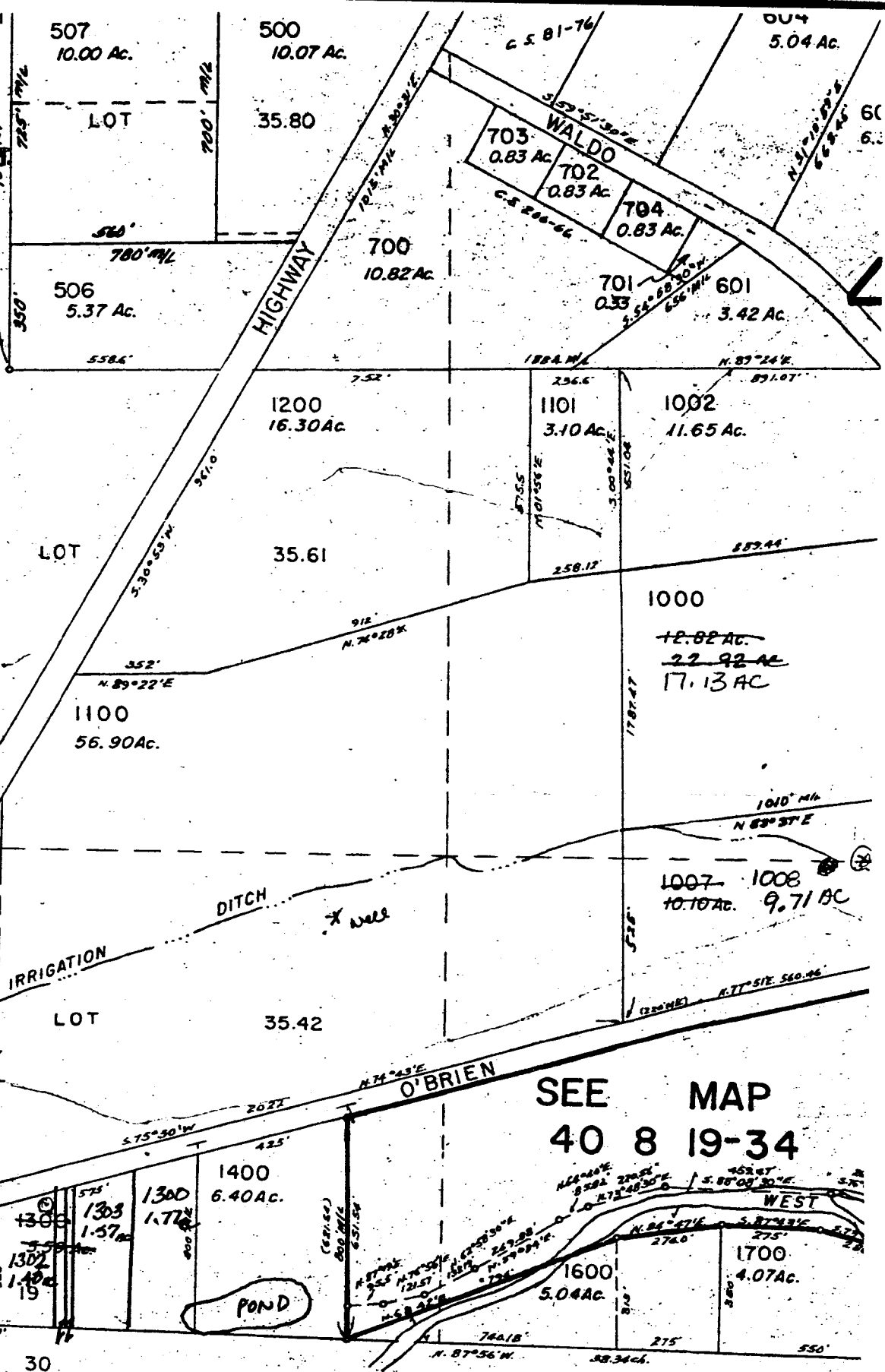
SEE MAP 40 9 24

↑
N
↓

T 40s R 8W

1" = 400'

JOSEPHINE COUNTY



SEE MAP
40 8 19-34

RECEIVED BY OWRD

JAN 23 2015

SALEM, OR

Application No. R-84322

Permit No. R-12897

SEE