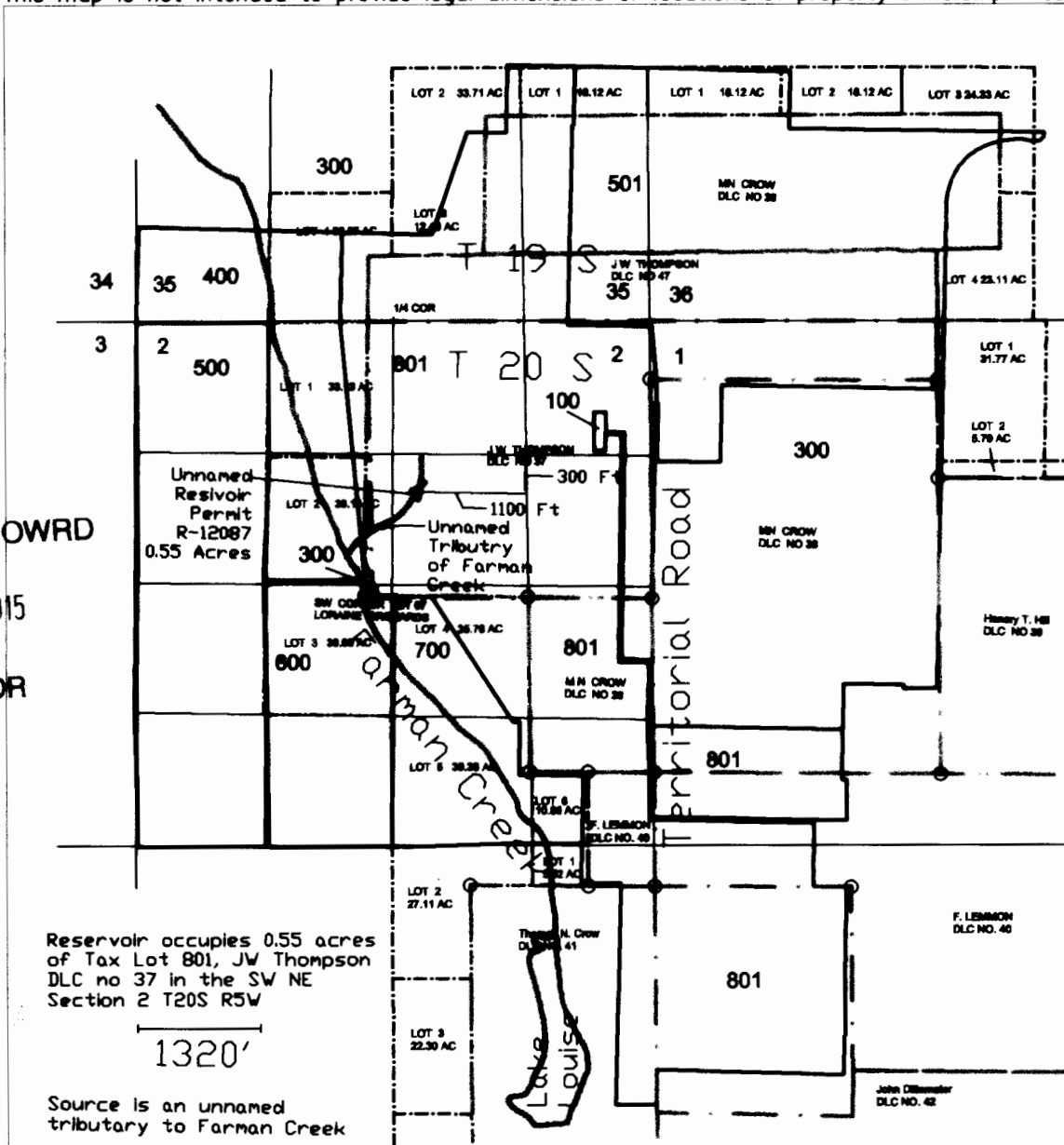


This map is not intended to provide legal dimensions or locations of property ownership lines


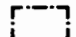



RECEIVED BY OWRD
MAY 18 2015
SALEM, OR



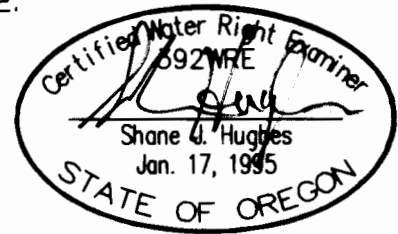
Reservoir occupies 0.55 acres of Tax Lot 801, JW Thompson DLC no 37 in the SW NE Section 2 T20S R5W

1320'

Source is an unnamed tributary to Farman Creek

- Tax Lot Lines 
- Tax Lot Numbers **801**
- Government Lots 
- DLC Boundaries 
- Surface Water 
- DLC Corner 

Reservoir is located 300 feet south and 1100 feet west from the NE corner of the SW 1/4 of the NE 1/4 of Section 2.



EXPIRATION DATE: 6/30/15

**CLAIM OF BENEFICIAL USE
FINAL PROOF SURVEY
APPLICATION R-73961 PERMIT R-12087
KING ESTATES WINERY, INC.
SW 1/4 NE 1/4 SECTION 2 T20S R5W W.M.**

EGR & Associates, Inc.
Engineers, Geologists, and Surveyors

2535B Prairie Road
Eugene, Oregon 97402

(541) 688-8322
Fax (541) 688-8087