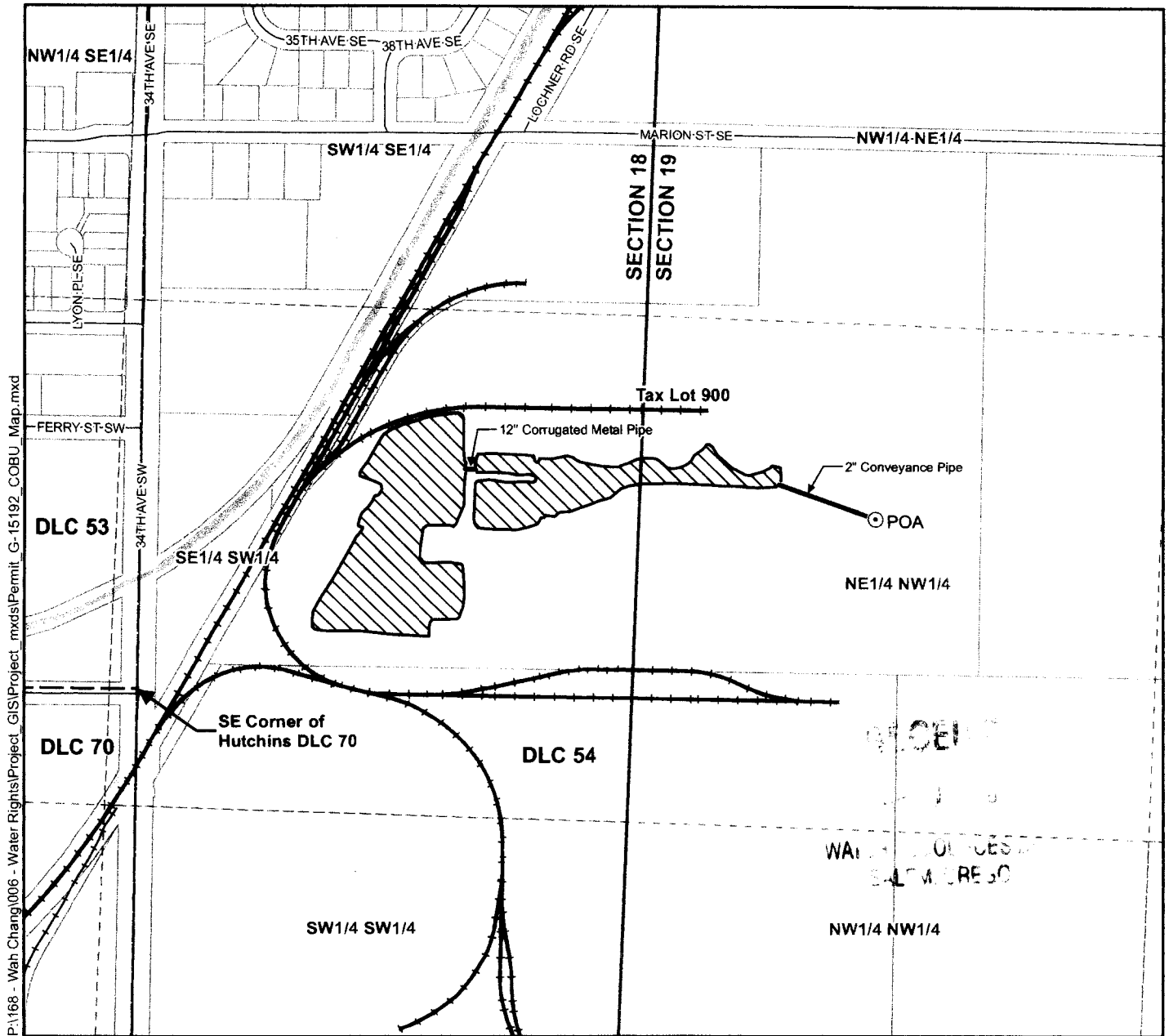


Claim of Beneficial Use Map
Application G-15553, Permit G-15192
Township 11 South, Range 3 West (W.M.)



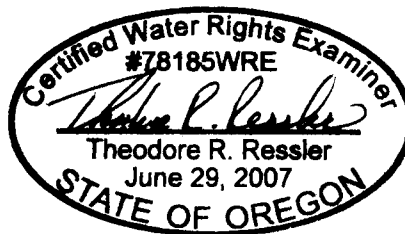
P:\168 - Wah Chang\006 - Water Rights\Project_GIS\Project_mxd\Permit_G-15192_COBU_Map.mxd

Legend

- Point of Appropriation (POA)
- ▨ Place of Use (POU)
- Conveyance Pipelines
- ⊕ Tax Lots
- ~ Roads
- +— Railroads
- ⊖ Waterbodies

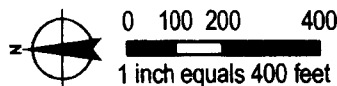
POA Legal Description

Point of Appropriation
 Located 1,870 feet South and 450 feet East from the SE corner of Hutchins DLC 70, NE1/4 NW1/4, Section 19, Township 11 South, Range 3 West (W.M.)



EXPIRES: 12-31-2010

Scale



Map Information

Projection: Oregon State Plane North Zone
 Datum: North American Datum of 1983
 Date: April 8, 2008
 Prepared By: GSI Water Solutions, Inc.

Data Sources

City of Albany GIS, Linn County GIS,
 Oregon Geospatial Data Clearinghouse

Disclaimer

This map was prepared for the purpose of identifying the location of a water right only and it is not intended to provide legal dimensions or location of property ownership lines.

