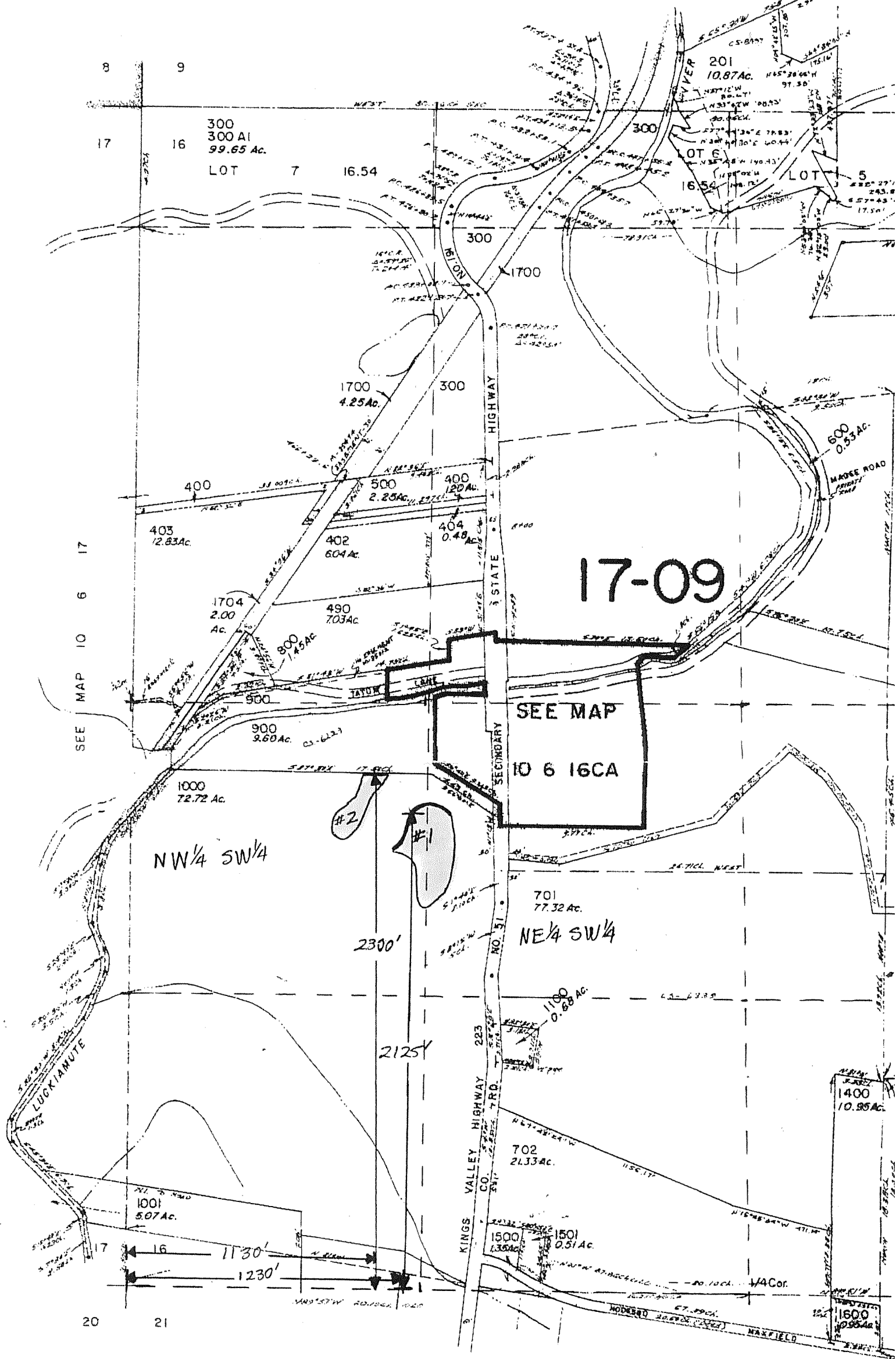


SECTION 16 T10S. R6W. W.M.
BENTON COUNTY

1" = 400'
1" ≈ 500'

SEE MAP 10 6 9

200
96.63



SEE MAP 10 6 21

Center of Dam for Pond #1 is located 1230' E + 2125' N from SW corner of Sec. 16
Center of Dam for Pond #2 is located 1130' E + 2300' N from SW corner of Sec. 16

RECEIVED

JUL 0 2 2002
WATER RESOURCES DEPT.
SALEM, OREGON

Application No. R-84825
Permit No. R-13371

Agree with these
measurements.

Chase
6/26/02