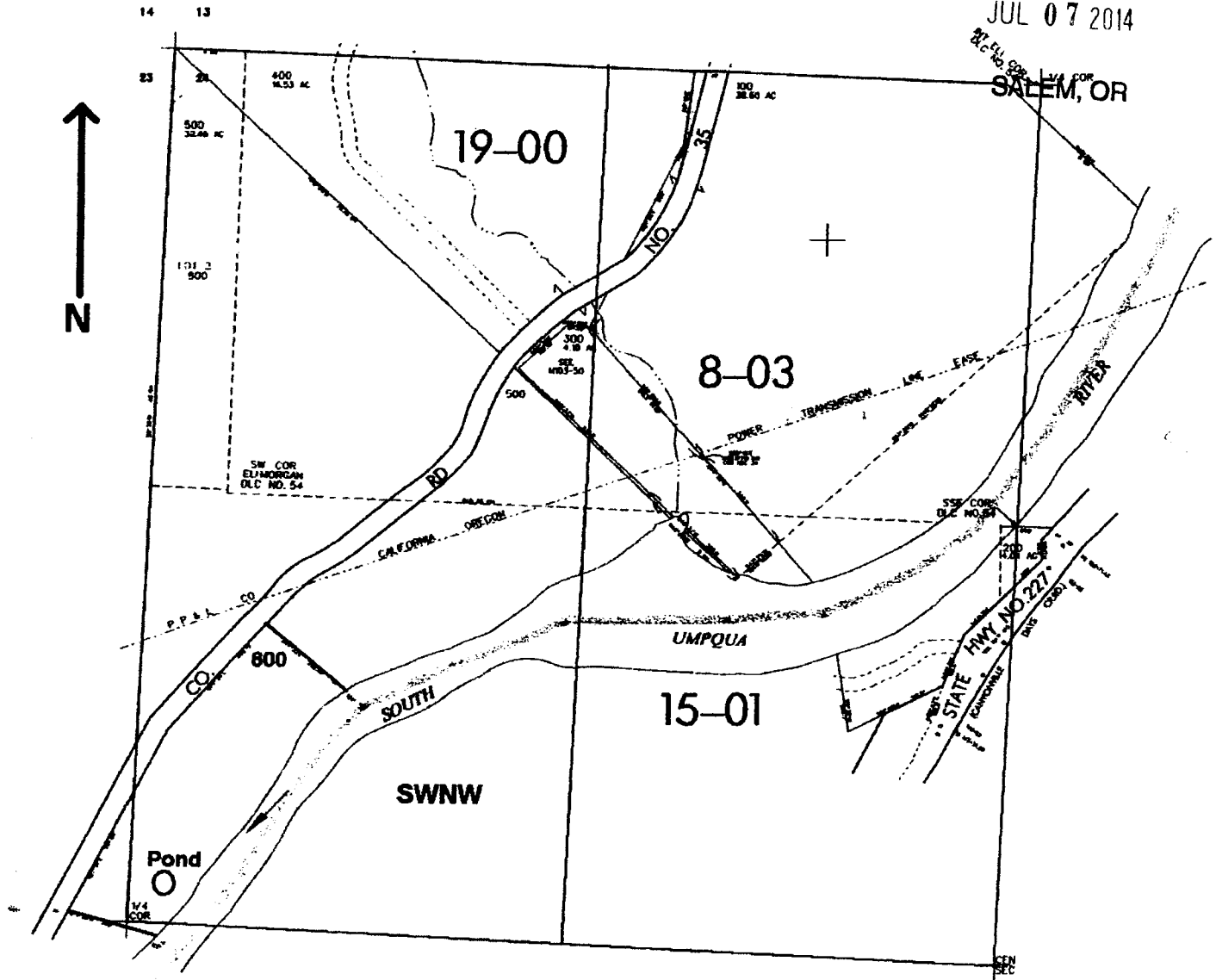


NW1/4 SEC. 24 T.30S. R.5 W. W.M.
DOUGLAS COUNTY

RECEIVED BY OWRD

Scale: 1" = 500'

JUL 07 2014



Pond located 120 ft. N. and 100 ft. E. from the W. 1/4 corner of Sec. 24

app # R86153
Permit # R14162

RECEIVED

JAN 26 2005

WATER RESOURCES DEPT
SALEM, OREGON