

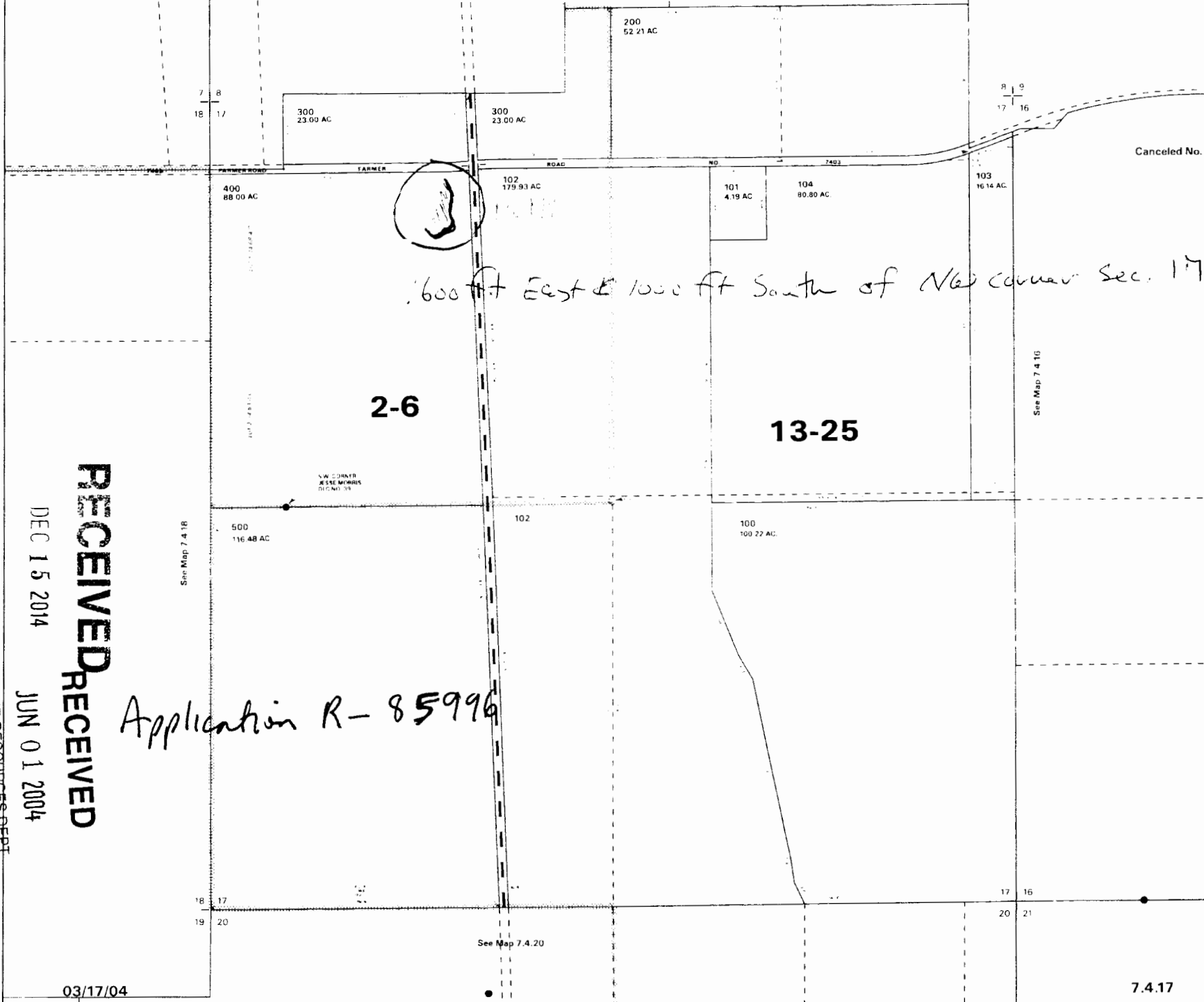
Unit 12. B 14C19

IMPORTANT
This Map for Assessment
and Taxation Purposes
ONLY

SEC.17 T7S R4W WM
POLK COUNTY

7.4.17

Scale 1" = 400'



600 ft East & 1000 ft South of NW corner Sec. 17

Canceled No.

RECEIVED
RECEIVED

DEC 15 2014

JUN 01 2004

WATER RESOURCES DEPT
SALEM, OREGON

Application R-85996

03/17/04

7.4.17