

BENTON COUNTY

THIS MAP WAS PREPARED FOR ASSESSMENT PURPOSES ONLY

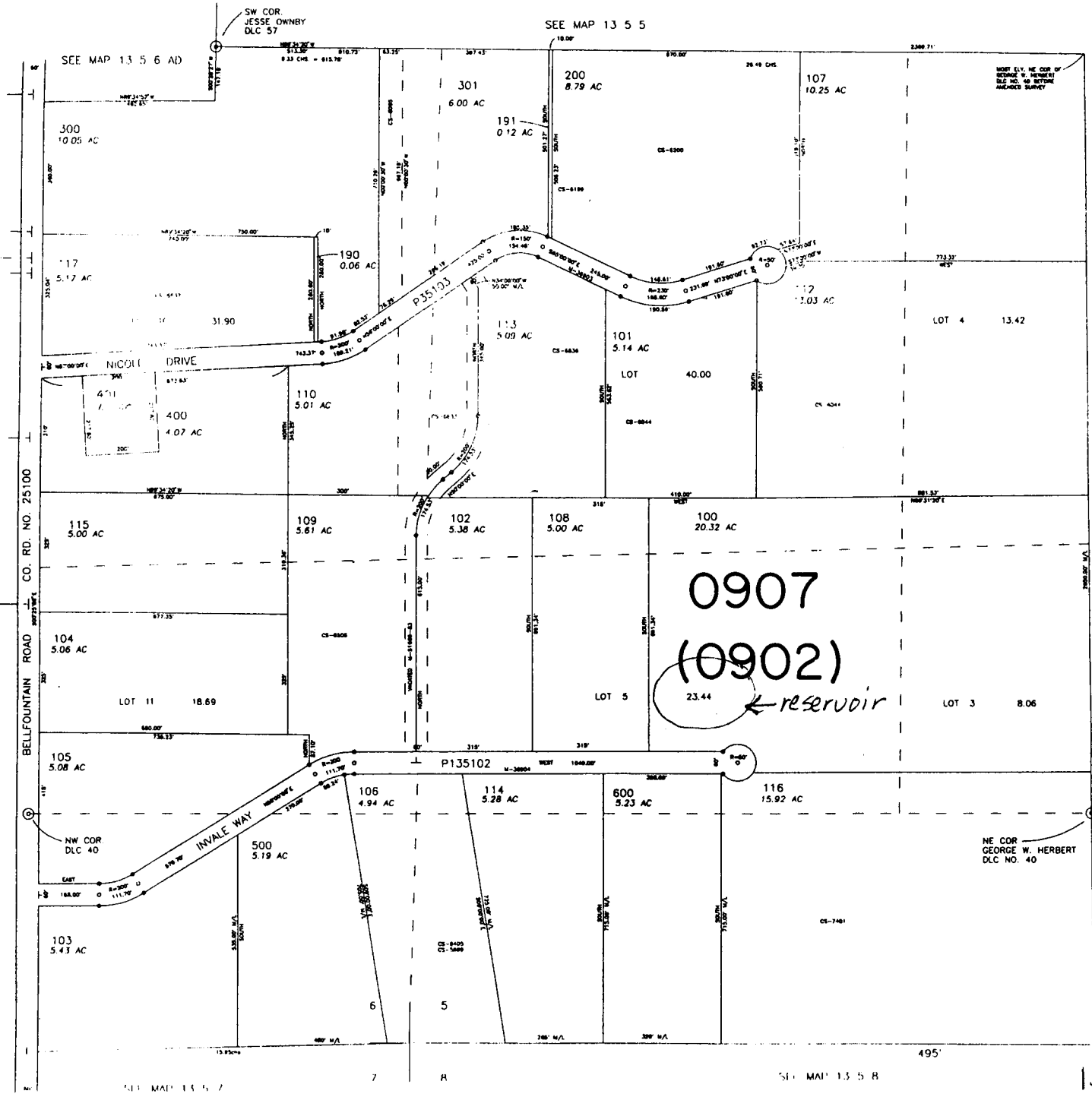
13-5-5C

RLV: 02-20-98
CANC.

111
302
303

1" = 200'

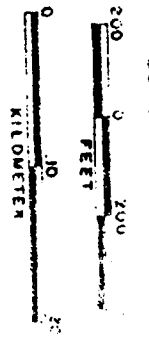
SEE MAP 13 5 5



Application No. R 84518
Permit No.

SEE MAP 13 5 6

SEE MAP 13 5 5



SCALE 1:1000

RECEIVED

AUG 9 2000

WATER RESOURCES DEPT.
SALEM, OREGON

RECEIVED
AUG 23 1998
DEPT. OF REVENUE
STATE OF OREGON

13-5-5C