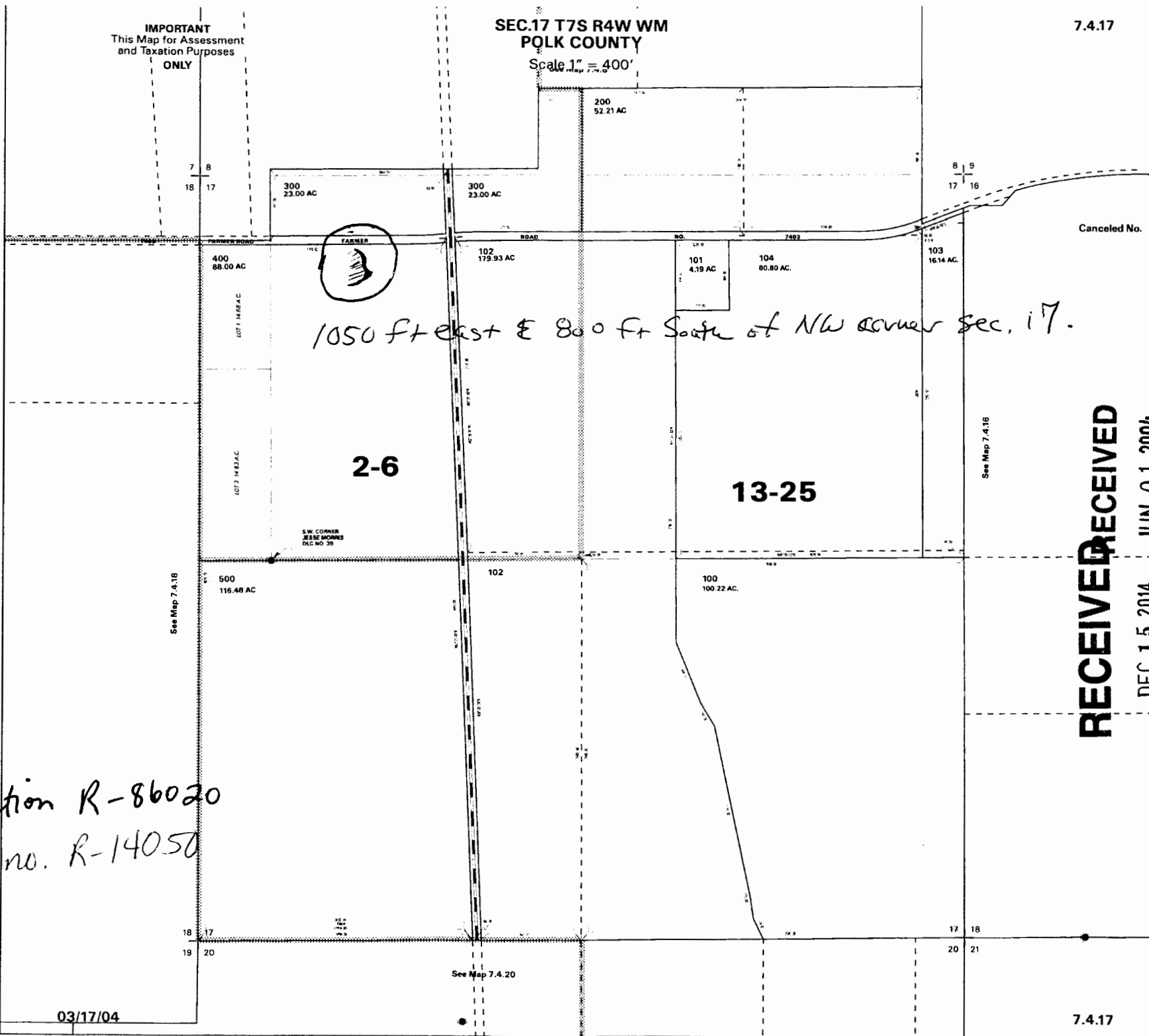


IMPORTANT
This Map for Assessment
and Taxation Purposes
ONLY

SEC.17 T7S R4W WM
POLK COUNTY

Scale 1" = 400'

7.4.17



RECEIVED

DEC 15 2014 JUN 01 2004

WATER RESOURCES DEPT
SALEM, OREGON

Application R-86020
Permit no. R-14050