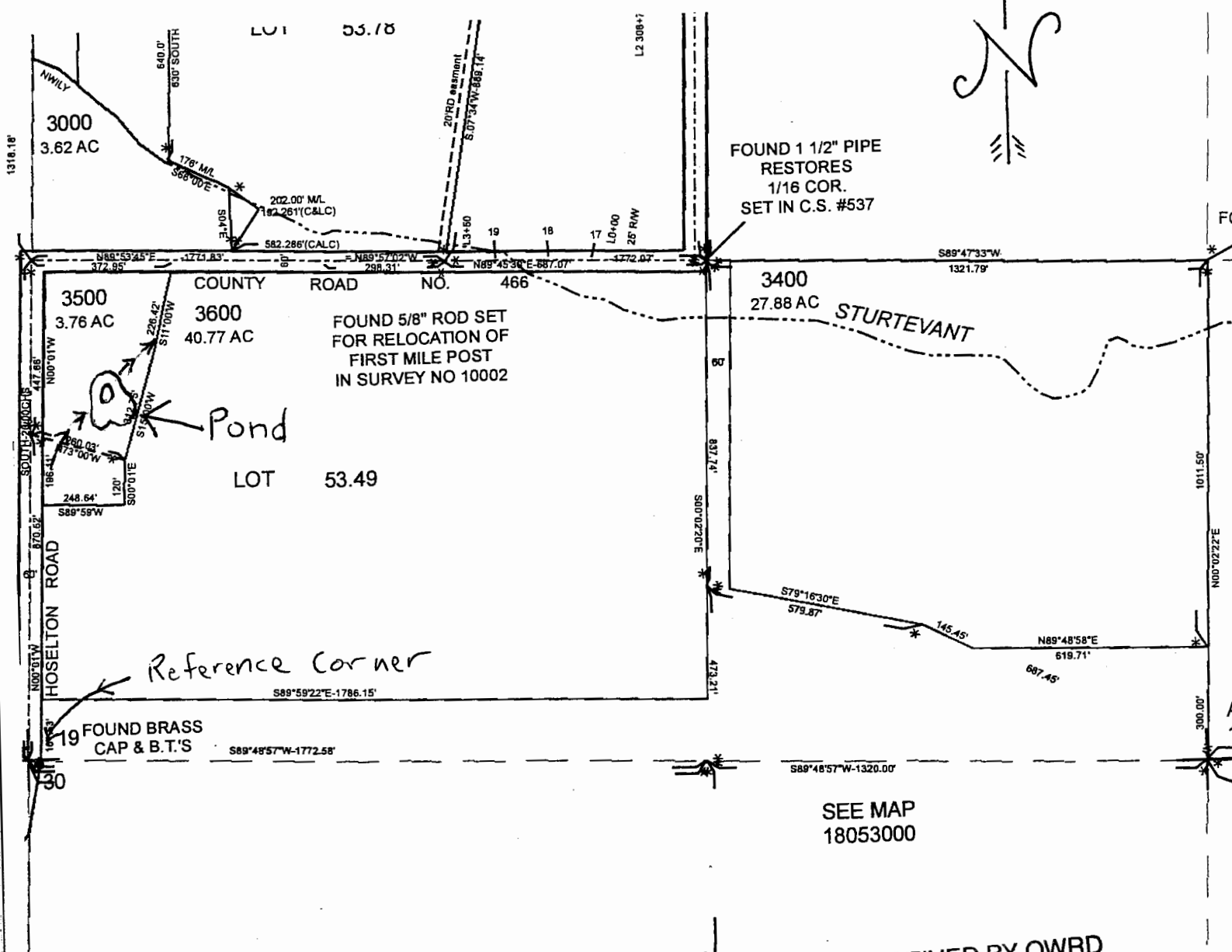


T 18 S, R 5 W Sec 19 SW 1/4 SW 1/4

center of Pond 835' N & 225' E of SW corner Sec 19

Scale 1" = 400'



FOUND 1 1/2" PIPE RESTORES 1/16 COR. SET IN C.S. #537

FOUND 5/8" ROD SET FOR RELOCATION OF FIRST MILE POST IN SURVEY NO 10002

Reference Corner

SEE MAP 18053000

RECEIVED BY OWRD

AUG 21 2014

SALEM, OR