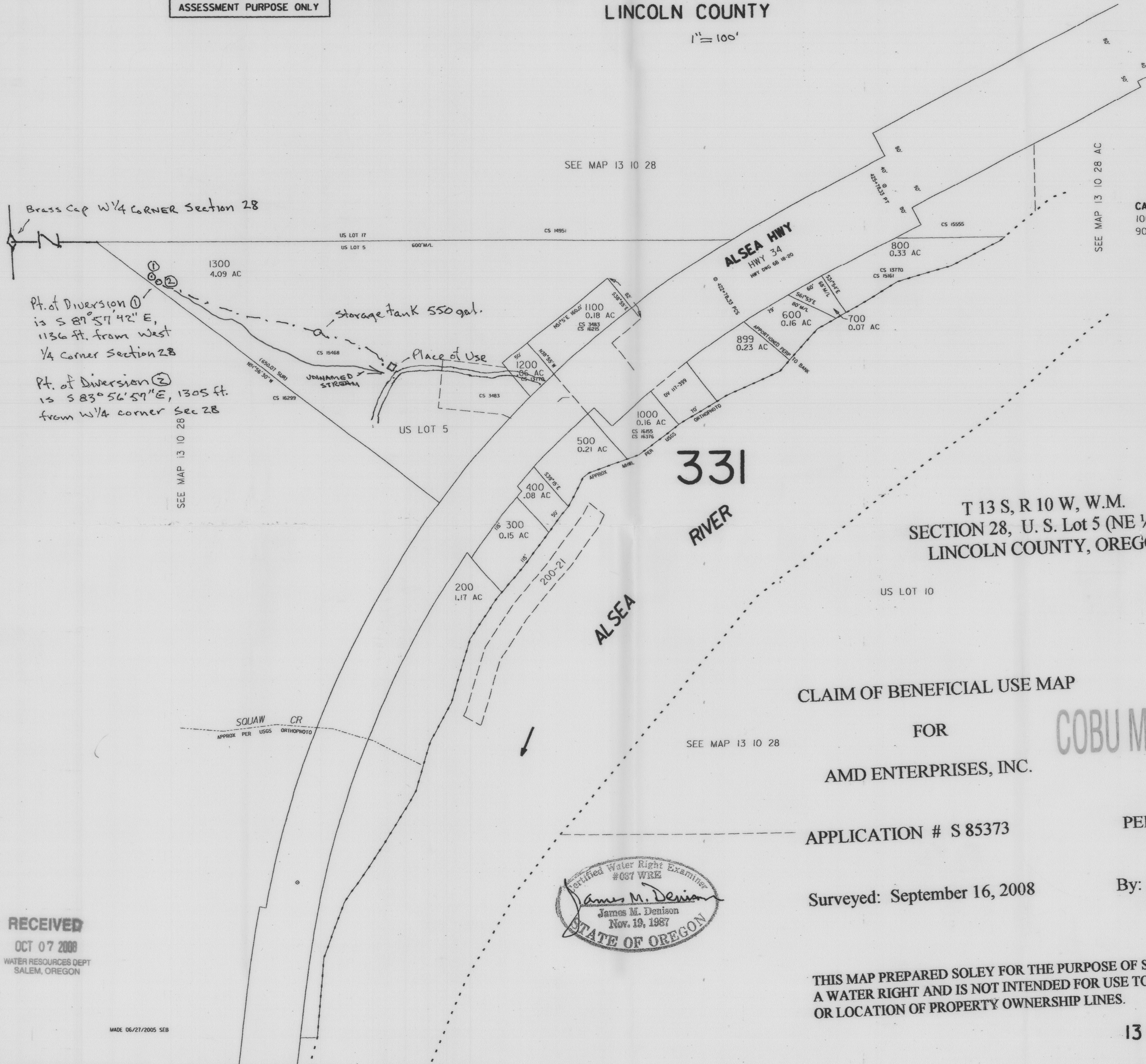


THIS MAP WAS PREPARED FOR
ASSESSMENT PURPOSE ONLY

NE 1/4 SW 1/4 SECTION 28 T13S R10W WM
LINCOLN COUNTY

13 10 28 CA

1" = 100'



CANCELLED NO.
100
900



Brass Cap W 1/4 CORNER Section 28

Pt. of Diversion ①
is S 87° 57' 42" E,
1136 ft. from West
1/4 corner Section 28

Pt. of Diversion ②
is S 83° 56' 57" E, 1305 ft.
from W 1/4 corner Sec 28

SEE MAP 13 10 28

SEE MAP 13 10 28

SEE MAP 13 10 28 AC

T 13 S, R 10 W, W.M.
SECTION 28, U. S. Lot 5 (NE 1/4 -SW 1/4)
LINCOLN COUNTY, OREGON

CLAIM OF BENEFICIAL USE MAP

FOR

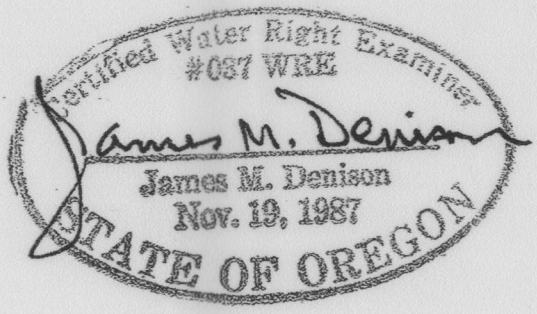
AMD ENTERPRISES, INC.

APPLICATION # S 85373

Surveyed: September 16, 2008

PERMIT # 53971

By: J.M. Denison
WRE # 037



COBU MAP # 0382

0382

RECEIVED
OCT 07 2008
WATER RESOURCES DEPT
SALEM, OREGON

MADE 06/27/2005 SEB

THIS MAP PREPARED SOLEY FOR THE PURPOSE OF SHOWING LOCATION OF
A WATER RIGHT AND IS NOT INTENDED FOR USE TO PROVIDE DIMENSIONS
OR LOCATION OF PROPERTY OWNERSHIP LINES.

13 10 28 CA