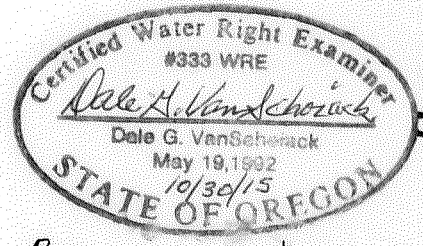
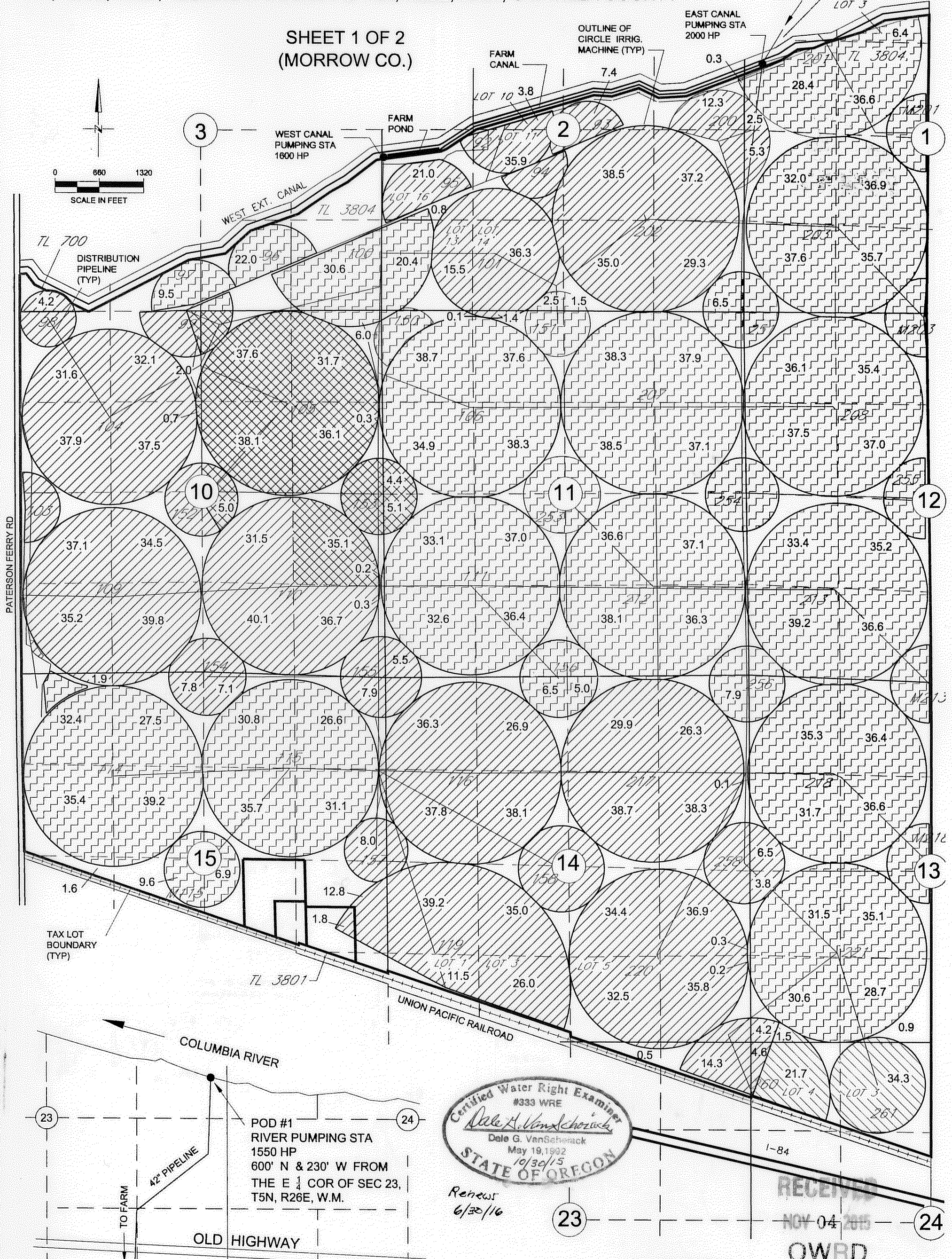
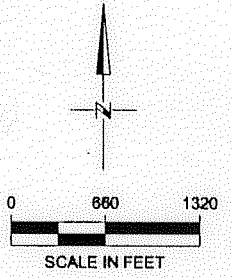


950

CLAIM OF BENEFICIAL USE MAP FOR TRANSFER T 11770  
IN THE NAME OF STANFIELD HUTTERIAN BRETHERN  
T4N, R26E, W.M., MORROW COUNTY & T4N, R30E, W.M., UMATILLA COUNTY

SHEET 1 OF 2  
(MORROW CO.)



Renews 6/30/16

RECEIVED  
NOV 04 2015  
OWRD

LOCATION OF POINT OF DIVERSION

POD #1  
RIVER PUMPING STA  
1550 HP  
600' N & 230' W FROM  
THE E 1/4 COR OF SEC 23,  
T5N, R26E, W.M.

LEGEND

- [Cross-hatch pattern] AREA IRRIGATED ASSOCIATED WITH ORIGINATING CERT 52222 1756.1 AC
- [Diagonal lines pattern] AREA IRRIGATED ASSOCIATED WITH ORIGINATING CERT 64411 195.8 AC
- [Diagonal lines pattern] AREA IRRIGATED ASSOCIATED WITH ORIGINATING CERT 56158 1290.0 AC
- [Diagonal lines pattern] AREA IRRIGATED ASSOCIATED WITH ORIGINATING CERT 76052 58.4 AC

261 CIRCLE # (TYPICAL)

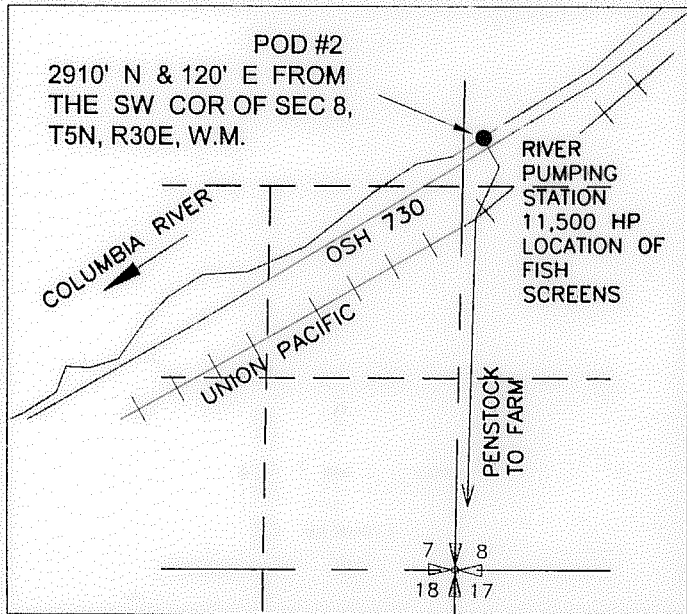
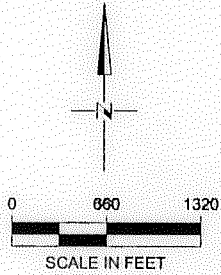
NOTE: THE PURPOSE OF THIS MAP IS TO IDENTIFY THE APPROXIMATE LOCATION OF THE WATER RIGHT. IT IS NOT INTENDED TO PROVIDE INFORMATION RELATIVE TO THE LOCATION OF PROPERTY OWNERSHIP BOUNDARY LINES. THE CIRCLE LAYOUT AND PIPE DISTRIBUTION SYSTEM ARE BASED ON FARM MAPS, FIELD OBSERVATIONS AND DESCRIPTIONS PROVIDED BY THE OWNER.



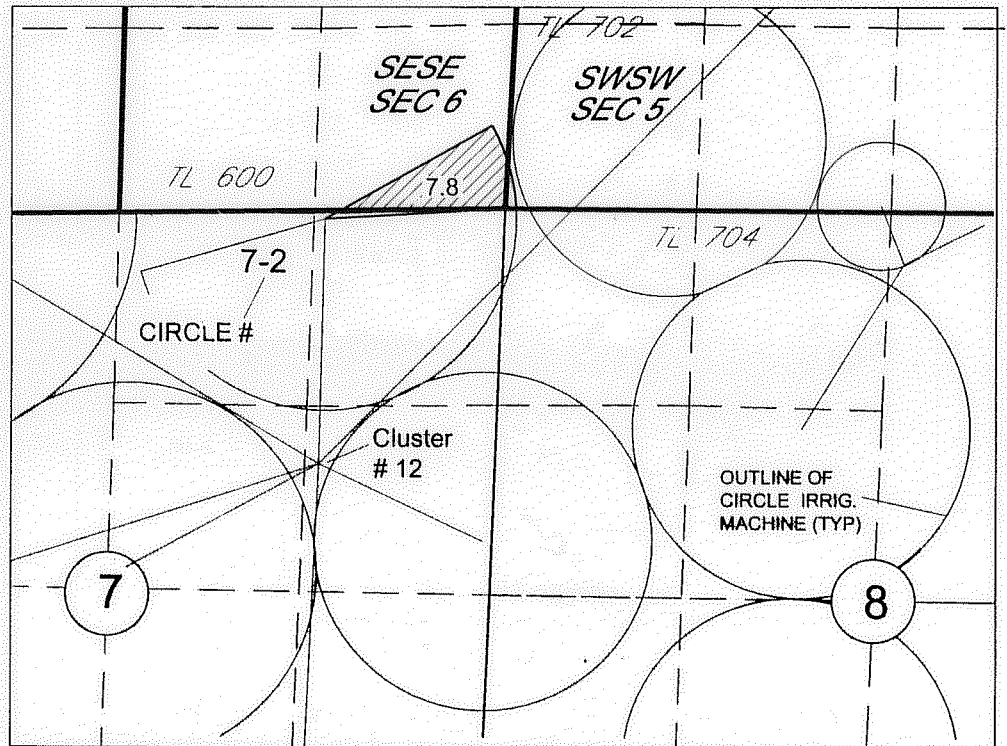
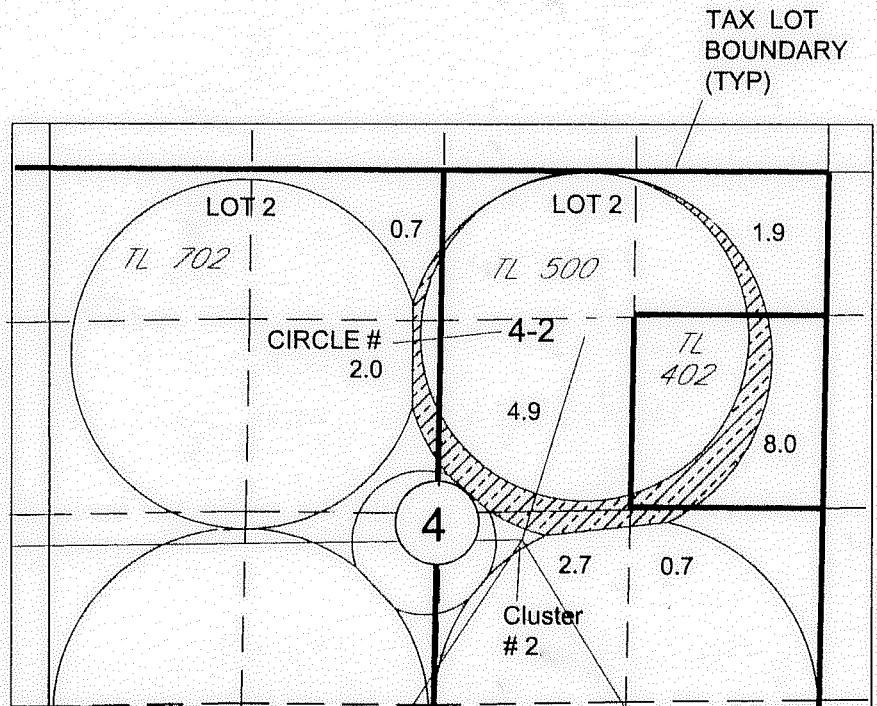
CLAIM OF BENEFICIAL USE MAP FOR TRANSFER T 11770  
 IN THE NAME OF STANFIELD HUTTERIAN BRETHREN  
 T4N, R26E, W.M., MORROW COUNTY & T4N, R30E, W.M., UMATILLA COUNTY

950

SHEET 2 OF 2  
 (UMATILLA CO.)

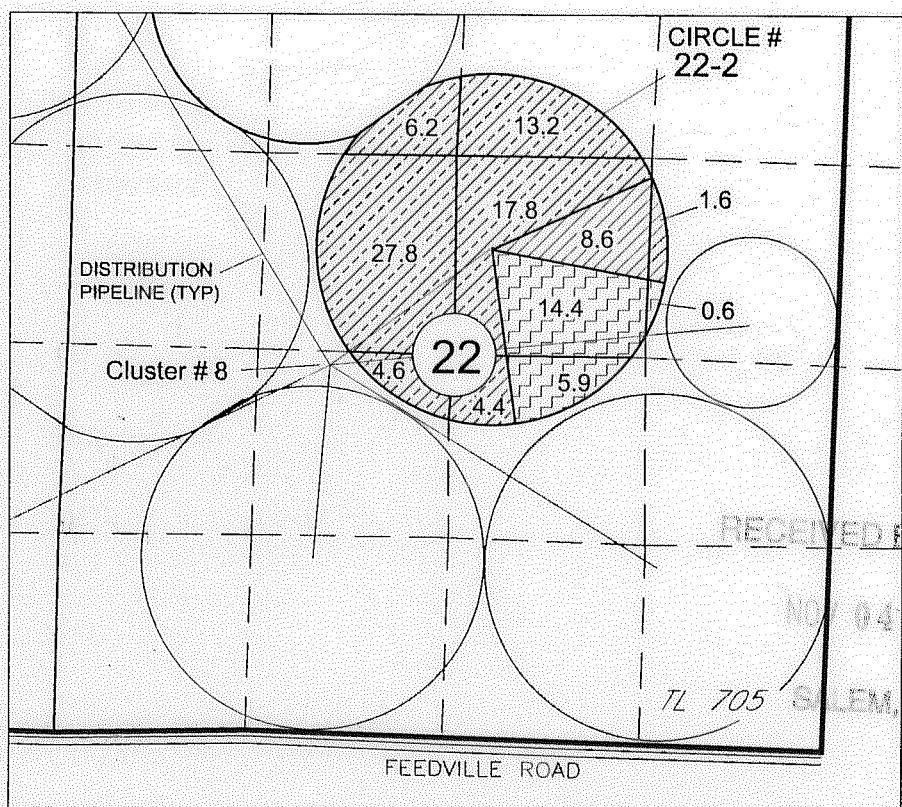
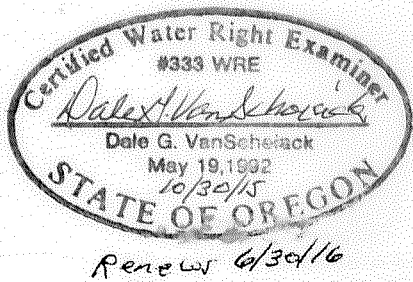


LOCATION OF POINT OF DIVERSION



LEGEND

-  AREA IRRIGATED ASSOCIATED WITH ORIGINATING CERT 52222  
20.9 AC
-  AREA IRRIGATED ASSOCIATED WITH ORIGINATING CERT 87073  
94.9 AC
-  AREA IRRIGATED ASSOCIATED WITH ORIGINATING CERT 56158  
18.0 AC



RECEIVED BY OWRD  
 NOV 04 2015  
 SALEM, OR

NOTE:  
 THE PURPOSE OF THIS MAP IS TO IDENTIFY THE APPROXIMATE LOCATION OF THE WATER RIGHT. IT IS NOT INTENDED TO PROVIDE INFORMATION RELATIVE TO THE LOCATION OF PROPERTY OWNERSHIP BOUNDARY LINES. THE CIRCLE LAYOUT AND PIPE DISTRIBUTION SYSTEM ARE BASED ON FARM MAPS, FIELD OBSERVATIONS AND DESCRIPTIONS PROVIDED BY THE OWNER.