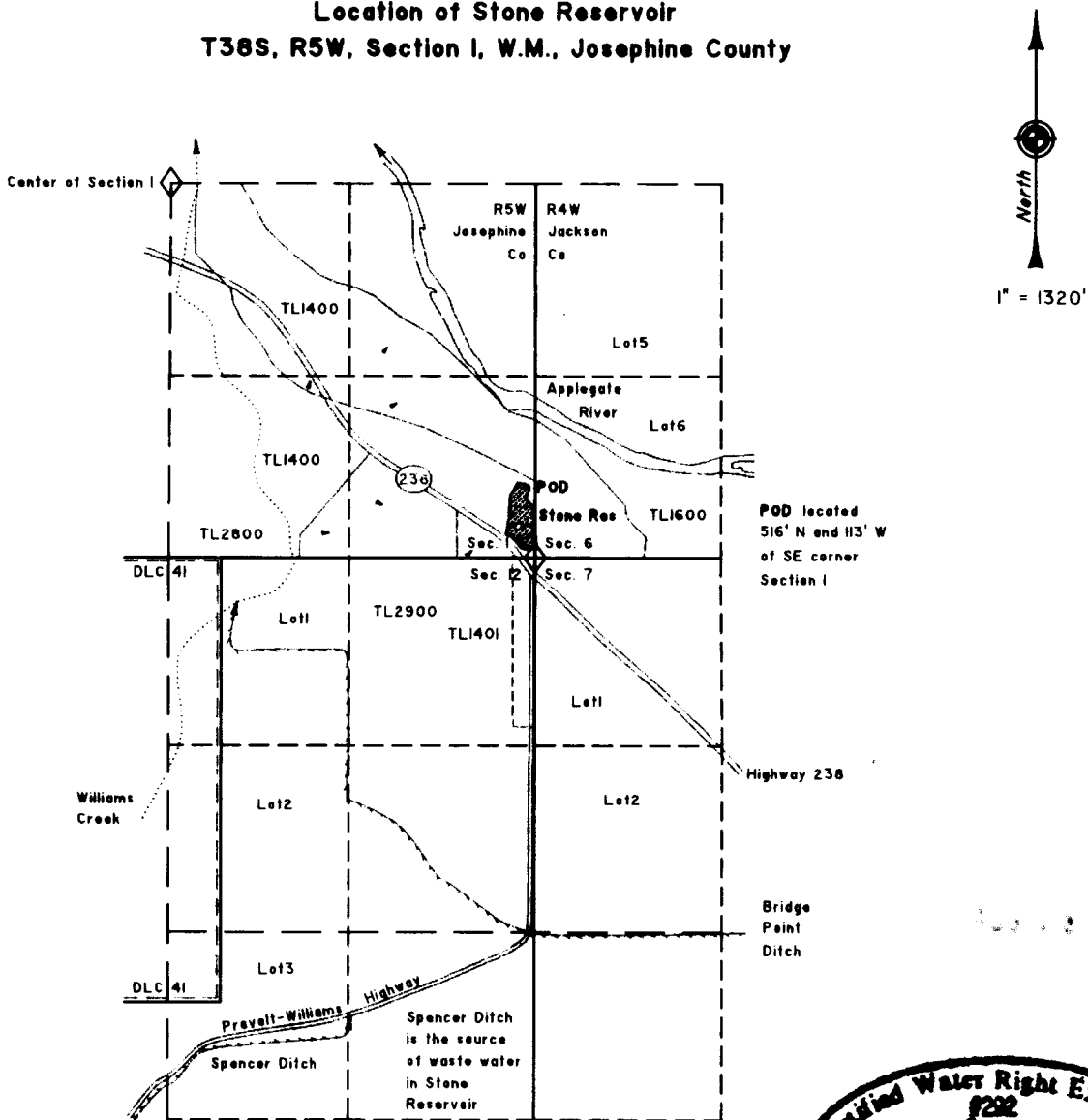


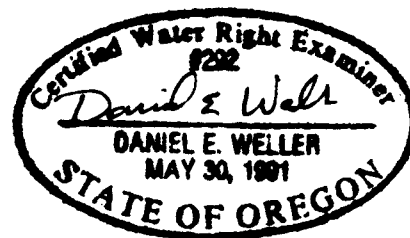
CLAIM OF BENEFICIAL USE MAP FROM STONE RESERVOIR (C# 82896)

Location of Stone Reservoir
T38S, R5W, Section I, W.M., Josephine County



Stone reservoir under Certificate #82896 in SE1/4SE1/4 section I, multiple purpose use.

APPLICATION NO. S-87019
PERMIT NO. S-54522
Site Inspection June 24, 2010



EXPIRES 6/30/12

The purpose of this map is to identify the location of water rights and is not intended to provide legal dimensions or the location of property ownership lines.

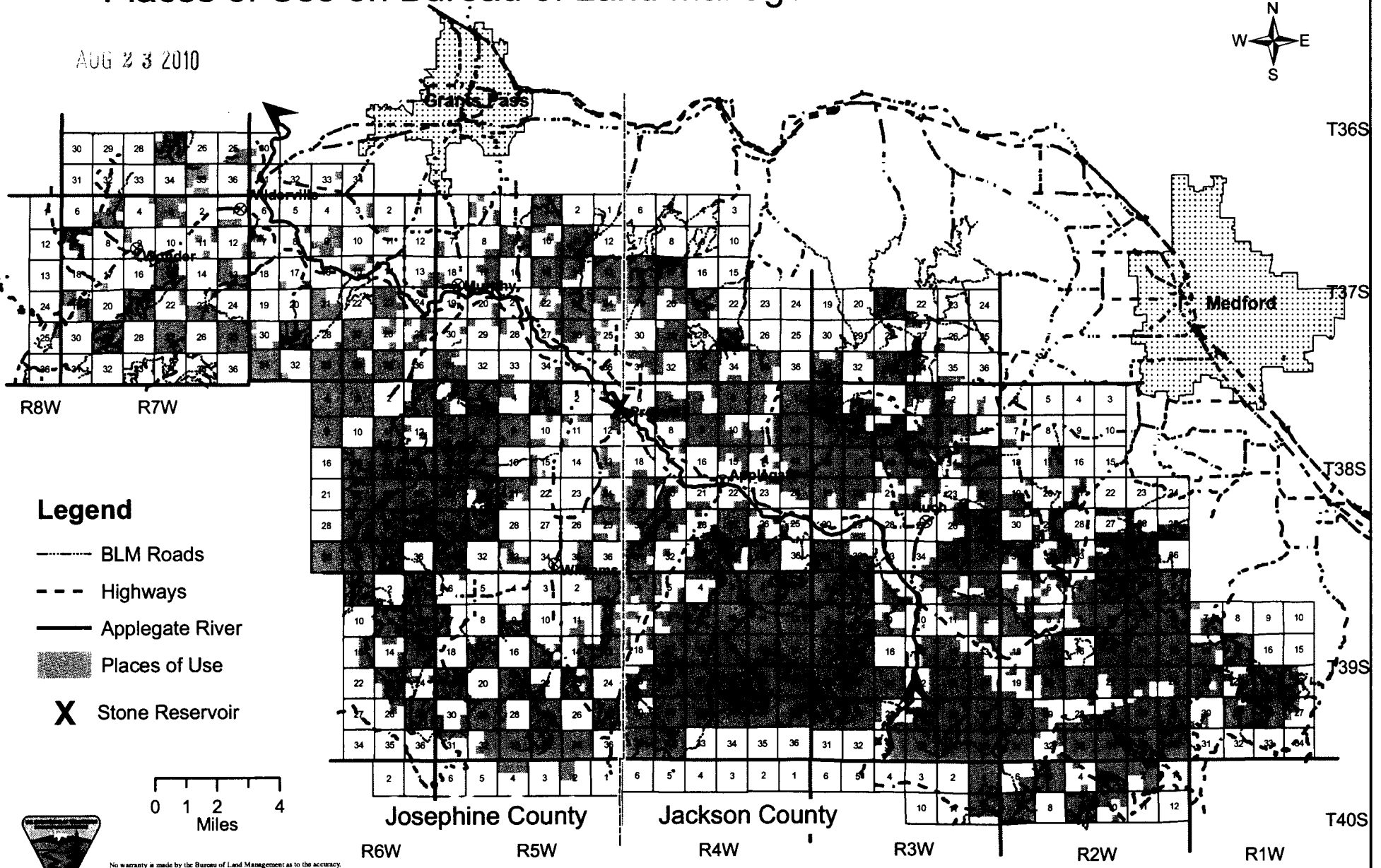
U.S. BUREAU OF LAND MANAGEMENT -
MEDFORD DISTRICT OFFICE

EXECUTED BY:
DANIEL E. WELLER, PLS, CWRE
P.O. BOX 2965
PORTLAND, OREGON 97208

DWG: STONE

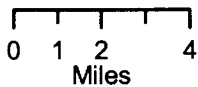
Application Map for Surface Water Use from Stone Reservoir (C#82896) Places of Use on Bureau of Land Management Medford District Lands

AUG 23 2010



Legend

- BLM Roads
- Highways
- Applegate River
- Places of Use
- Stone Reservoir



No warranty is made by the Bureau of Land Management as to the accuracy, reliability, or completeness of these data for individual or aggregate use with other data. Original data were compiled from various sources and may be updated without notification.