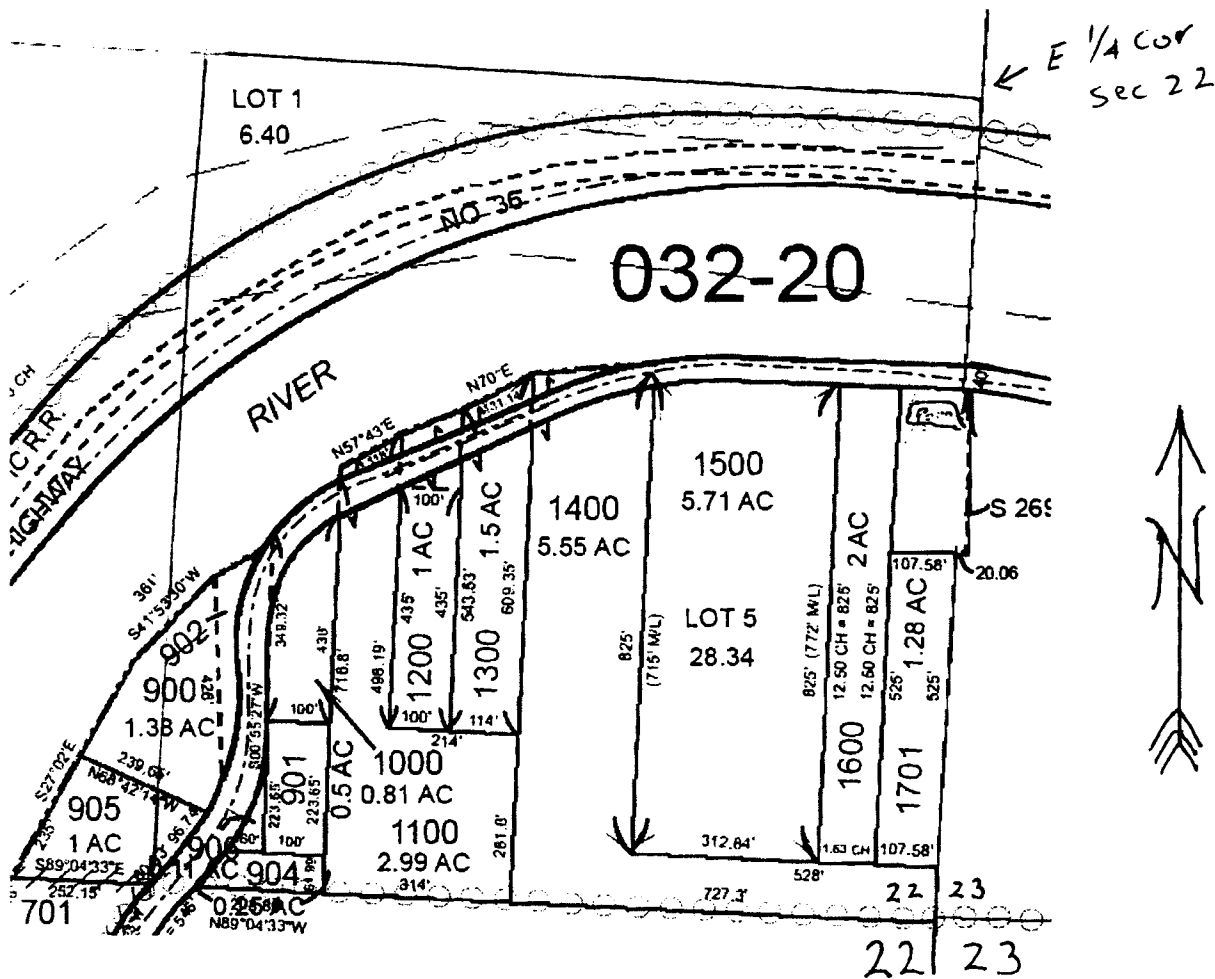


T 17 S, R 10 W Sec 22

Pond in NE, SE and very slightly in NW SW sec 23

scale 1" = 300'

TL 1700



Center of Pond 425 ft South.
 and 50 ft West of E 1/4 corner
 section 22

RB7817

RECEIVED BY OWRD

APR 15 2015

SALEM, OR

RECEIVED

JUN 12 2012

WATER RESOURCES DEPT
SALEM OREGON