

9635

MAP

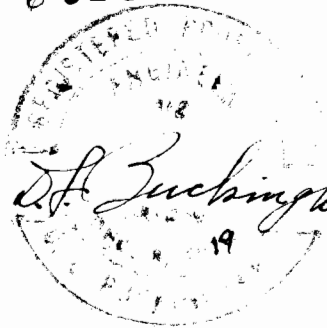
to accompany application of
 Jack L. N. Raymond
 to appropriate water
 SEC 21 TWP 27 S. R. 13 W. N.M.
 COOS CO ORE

I, D. L. Buckingham of Marshfield
 Ore., do hereby certify that the accompanying
 map was made from notes taken during
 an actual survey made by me June 30th
 1924 and that it correctly represents the
 works described in the accompanying
 application together with the location
 of all streams in the immediate
 vicinity

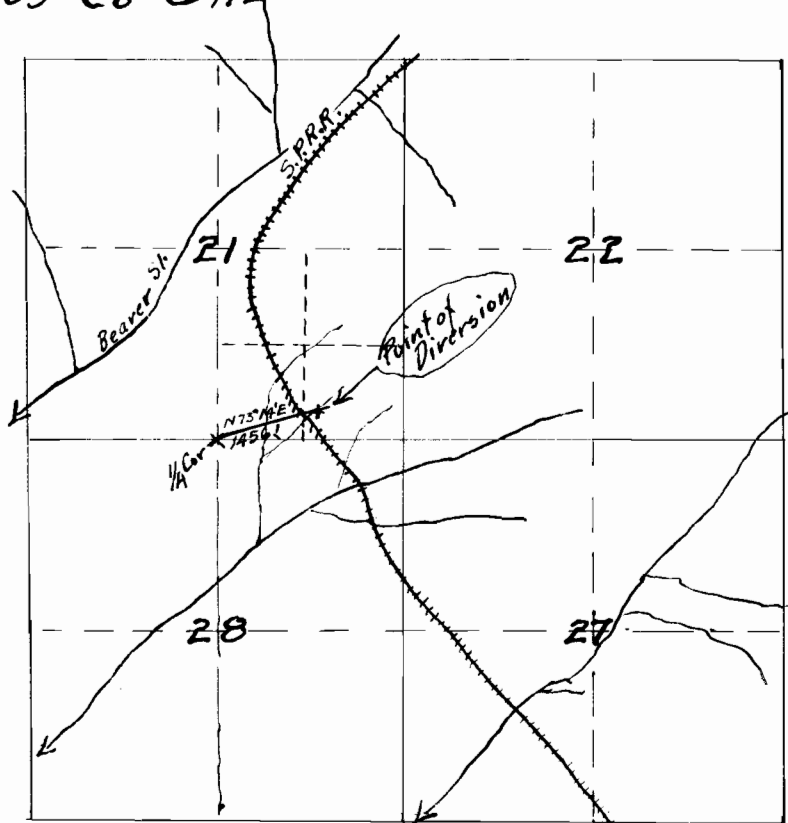
D. L. Buckingham

9635

6356



D. L. Buckingham



Scale
 40 chains =
 one inch

TWP 27 S. R. 13 W. N.M.