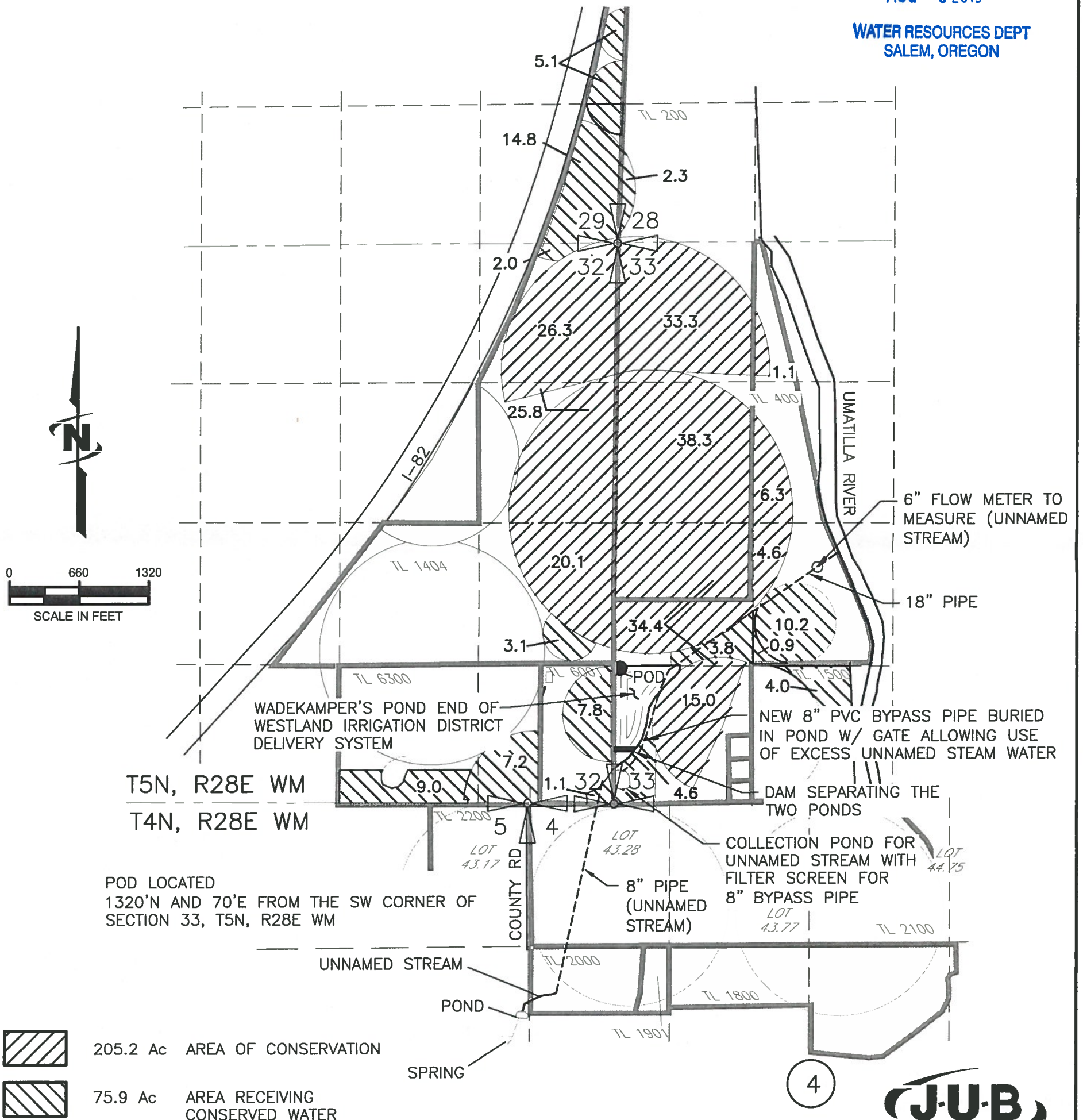


AMENDED 08-04-2015 CONSERVATION APPLICATION
 MAP
 FOR L. WADEKAMPER
 PERMIT 46567 - CERT 83856

RECEIVED

AUG - 6 2015

WATER RESOURCES DEPT
 SALEM, OREGON





POD LOCATED
 1320'N AND 70'E FROM THE SW CORNER OF
 SECTION 33, T5N, R28E WM

NEW 8" PVC BYPASS PIPE BURIED
 IN POND W/ GATE ALLOWING USE
 OF EXCESS UNNAMED STEAM WATER

DAM SEPARATING THE
 TWO PONDS

COLLECTION POND FOR
 UNNAMED STREAM WITH
 FILTER SCREEN FOR
 8" BYPASS PIPE

8" PIPE
 (UNNAMED
 STREAM)

-  205.2 Ac AREA OF CONSERVATION
-  75.9 Ac AREA RECEIVING CONSERVED WATER

NOTE:
 THE PURPOSE OF THIS MAP IS TO IDENTIFY THE APPROXIMATE LOCATION OF THE WATER RIGHT. IT IS NOT INTENDED TO PROVIDE INFORMATION RELATIVE TO THE LOCATION OF PROPERTY OWNERSHIP BOUNDARY LINES. PIPE LOCATIONS AND SIZES WHERE SHOWN WERE PROVIDED BY FARM OPERATIONAL PERSONNEL AND ARE APPROXIMATE LOCATIONS AND SIZES.

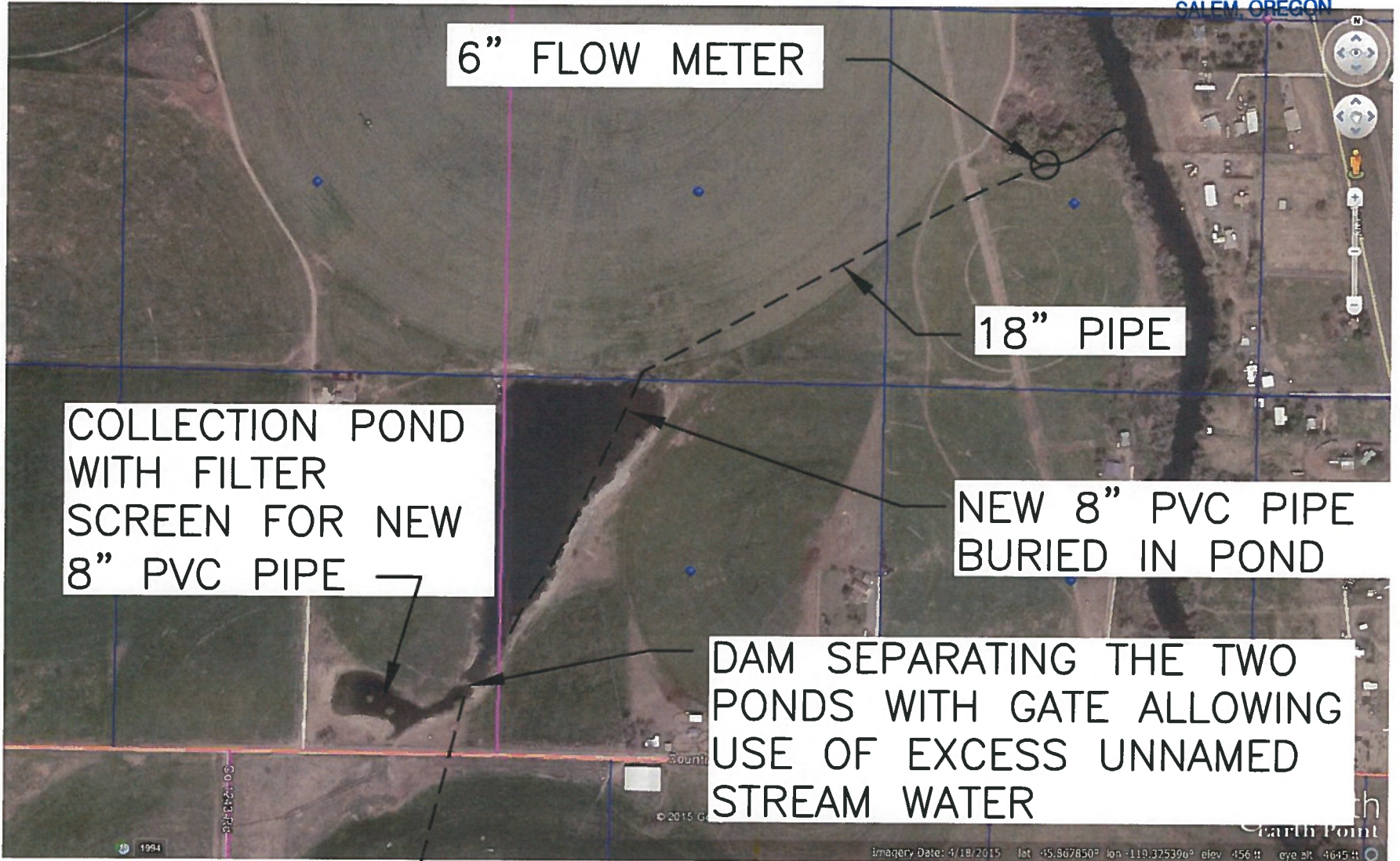
JUB
 Engineers • Surveyors • Planners
 2810 W. CLEARWATER AVE., STE. 201
 KENNEWICK, WA 99336 (509) 783-2144

8-05-2015 CONSERVATION AERIAL
PHOTO MAP FOR L. WADEKAMPER

RECEIVED

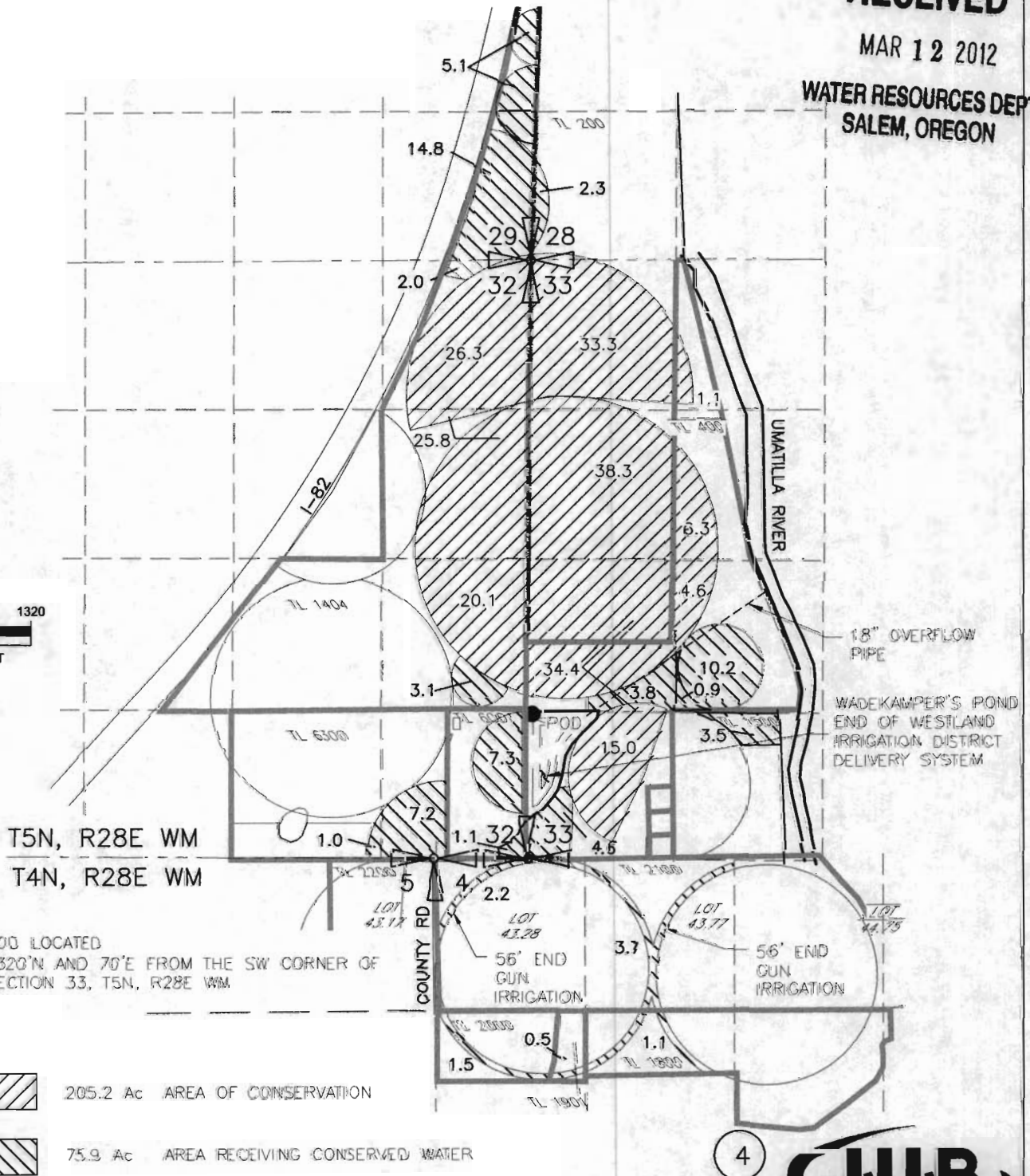
AUG - 6 2015

WATER RESOURCES DEPT
SALEM, OREGON



CONSERVATION APPLICATION MAP FOR L. WADEKAMPER PERMIT 46567 — CERT 83856 2012

RECEIVED
MAR 12 2012
WATER RESOURCES DEPT
SALEM, OREGON



POD LOCATED
1320' N AND 70' E FROM THE SW CORNER OF
SECTION 33, T5N, R28E WM

- 205.2 Ac AREA OF CONSERVATION
- 75.9 Ac AREA RECEIVING CONSERVED WATER



NOTE:
THE PURPOSE OF THIS MAP IS TO IDENTIFY THE APPROXIMATE LOCATION OF THE WATER RIGHT. IT IS NOT INTENDED TO PROVIDE INFORMATION RELATIVE TO THE LOCATION OF PROPERTY OWNERSHIP BOUNDARY LINES. PIPE LOCATIONS AND SIZES WHERE SHOWN WERE PROVIDED BY FARM OPERATIONAL PERSONNEL AND ARE APPROXIMATE LOCATIONS AND SIZES.

Engineers • Surveyors • Planners
2810 W. CLEARWATER AVE., STE. 201
KENNEWICK, WA 99336 (509) 783-2144