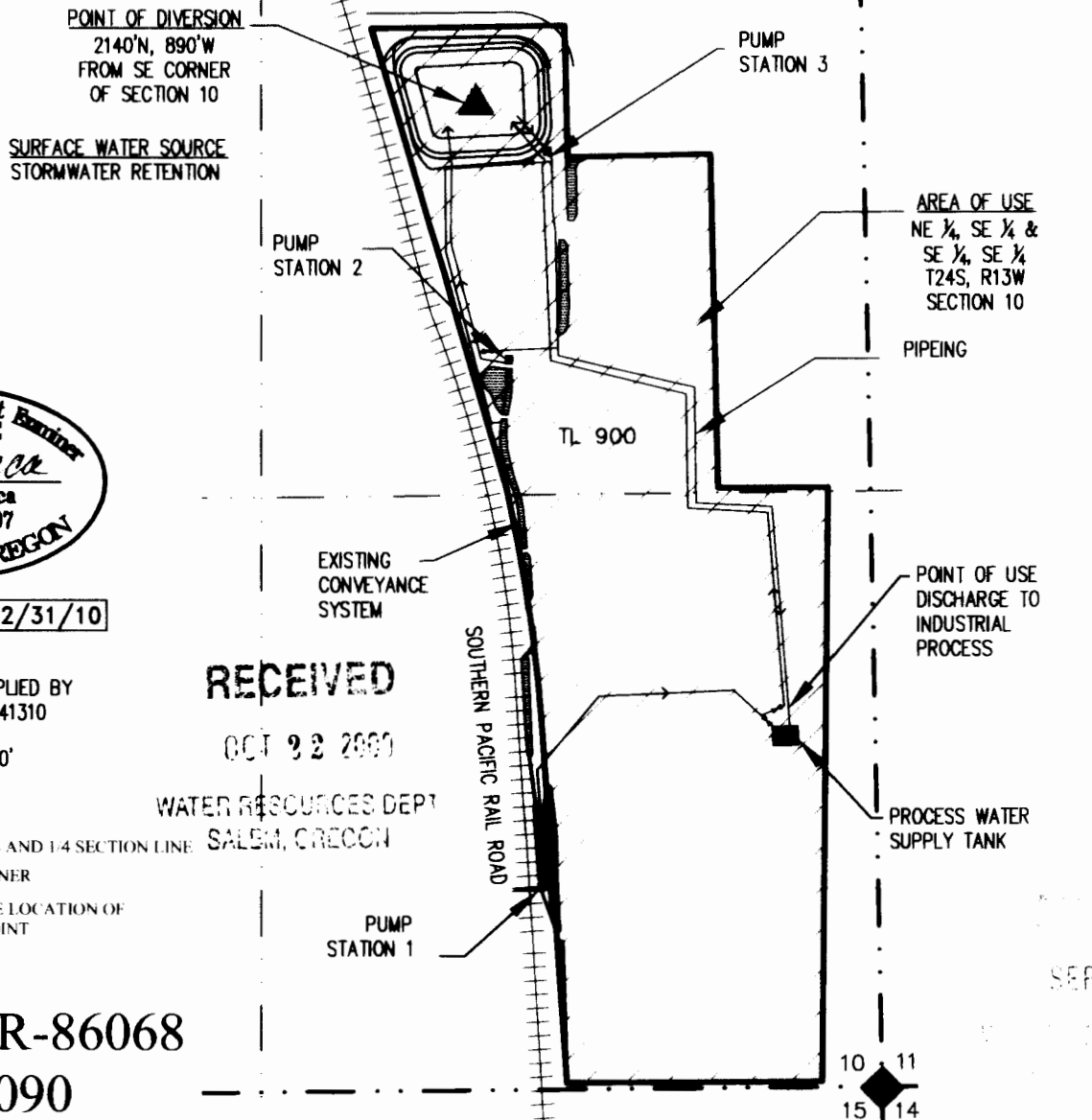


**T.24S., R.13W., W.M. SECTION 10
 MAP TO STORE WATER IN A RESERVOIR
 COOS BAY LUMBER
 TAX LOTS 900
 MAP NO. 241310
 COOS COUNTY, OREGON
 SEPTEMBER 2009**



EXPIRATION DATE: 12/31/10

BASE MAPPING SUPPLIED BY
 ASSESSORS MAP #241310

SCALE: 1" = 400'

LEGEND

- SECTION LINE AND 1/4 SECTION LINE
- ◆ SECTION CORNER
- ▲ APPROXIMATE LOCATION OF DIVERSION POINT

RECEIVED

OCT 22 2009

WATER RESOURCES DEPT
 SALEM, OREGON

**Application R-86068
 Permit R-14090**

THIS MAP IS FOR THE PURPOSE OF LOCATING A WATER RIGHT AND IS NOT INTENDED TO PROVIDE LEGAL DIMENSIONS FOR LOCATION OF PROPERTY BOUNDARIES.



EGR & Associates, Inc.

Engineers and Geologists

2535B Prairie Road
 Eugene, Oregon 97402

(541) 688-8322
 Fax (541) 688-8087

SEP 29