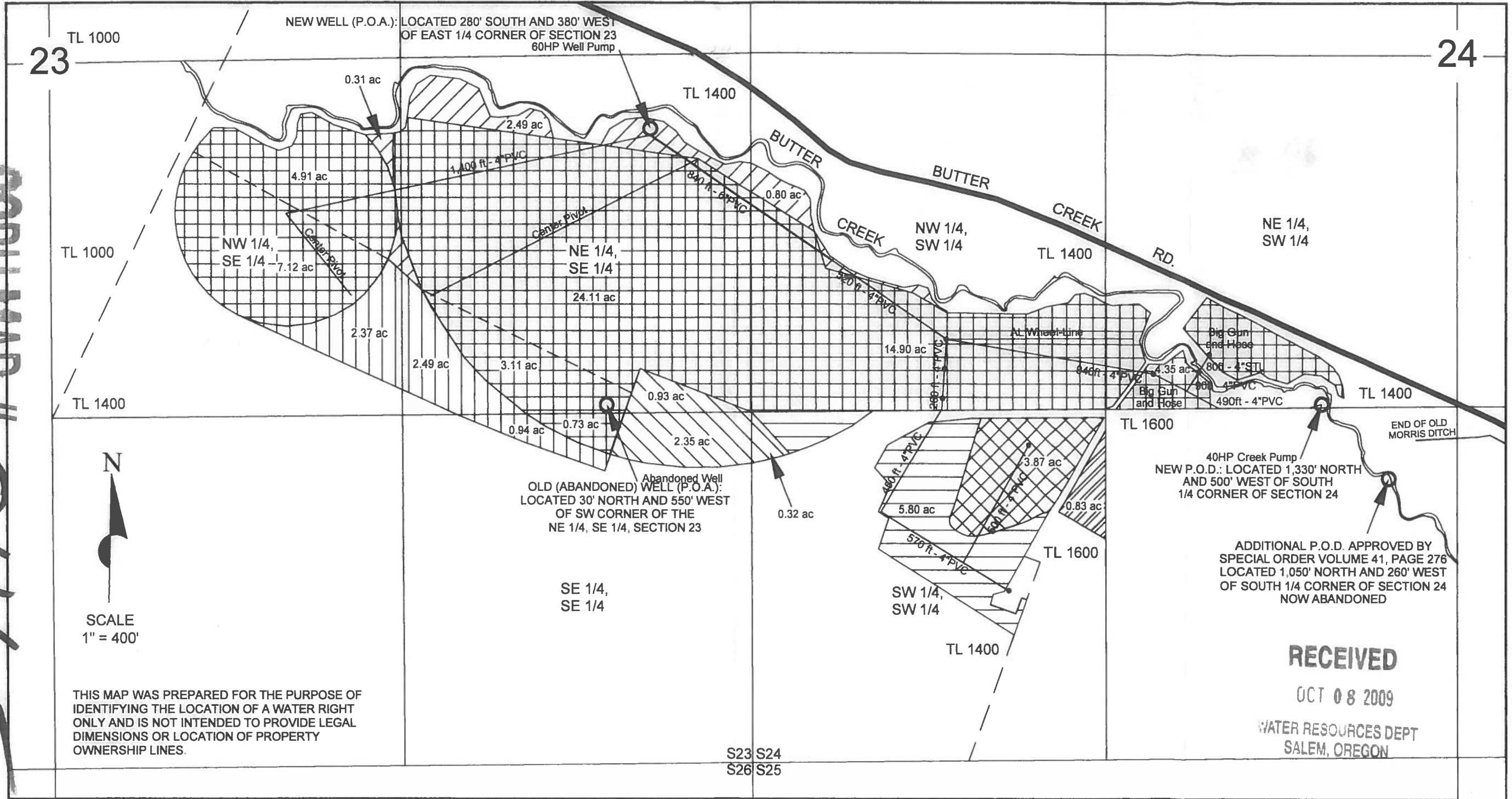


Township 1 North, Range 27 East, W.M.; SE 1/4 Section 23 and SW 1/4 Section 24

COBU MAP # 0465



THIS MAP WAS PREPARED FOR THE PURPOSE OF IDENTIFYING THE LOCATION OF A WATER RIGHT ONLY AND IS NOT INTENDED TO PROVIDE LEGAL DIMENSIONS OR LOCATION OF PROPERTY OWNERSHIP LINES.

RECEIVED
 OCT 08 2009
 WATER RESOURCES DEPT
 SALEM, OREGON

FROM	TO	SYMBOL	DESCRIPTION
[Hatched pattern]	[Hatched pattern]	[Grid pattern] & [Hatched pattern] & [Hatched pattern]	NEW POINT OF APPROPRIATION 70.60 ACRES CERTIFICATE 34384. 68.63 ACRES SURVEYED.
[Vertical lines pattern]	[Horizontal lines pattern]	[Horizontal lines pattern] & [Cross-hatch pattern]	NEW POINT OF DIVERSION 9.67 ACRES CERTIFICATE 46499 AND 80067.
[Vertical lines pattern]	[Horizontal lines pattern]	[Cross-hatch pattern]	NEW POINT OF APPROPRIATION 3.87 ACRES CERTIFICATE 34196.
[Vertical lines pattern]	[Horizontal lines pattern]		3.60 ACRES CERTIFICATES 2649 AND 34384 AND PERMIT 46499.
[Vertical lines pattern]	[Horizontal lines pattern]		5.80 ACRES PRIMARY DIMINISHED TO SUPPLEMENTAL CERTIFICATE 34384.
[Vertical lines pattern]	[Horizontal lines pattern]		PLACE OF USE UNCHANGED. 61.20 ACRES CERTIFICATE 34384. 59.23 ACRES SURVEYED.
[Hatched pattern]	[Hatched pattern]		PLACE OF USE NOT INCLUDED IN TRANSFER 8263; 0.83 ACRES TO REMAIN IN CERTIFICATE 34196.

FINAL PROOF SURVEY
 (NEW P.O.A., P.O.D., AND PLACES OF USE)
 Transfer No. T-9296
 in names of
SIDNEY R. AND RANDY R. BRITT
 September 8, 2009

Certified Water Rights Examiner
 57194WRE
Paul Wattenburger
 Paul L. Wattenburger
 July 16, 2003
 STATE OF OREGON

EXPIRES: 6/30/10

0465