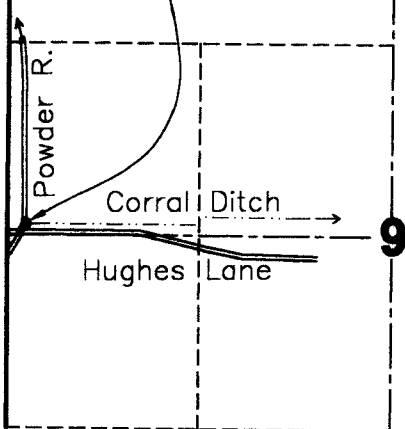
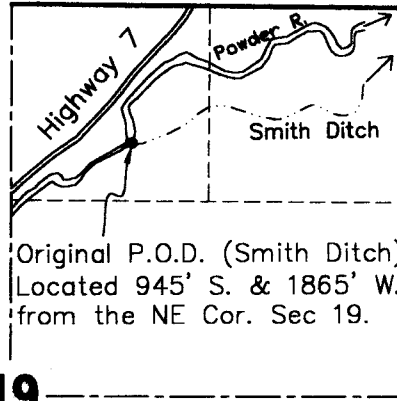


T. 9 S., R. 40 E., W.M.

Corral Ditch P.O.D. Located
50' N. & 2560' W. from
the Center of Sec. 9.



T. 10 S., R. 40 E., W.M.



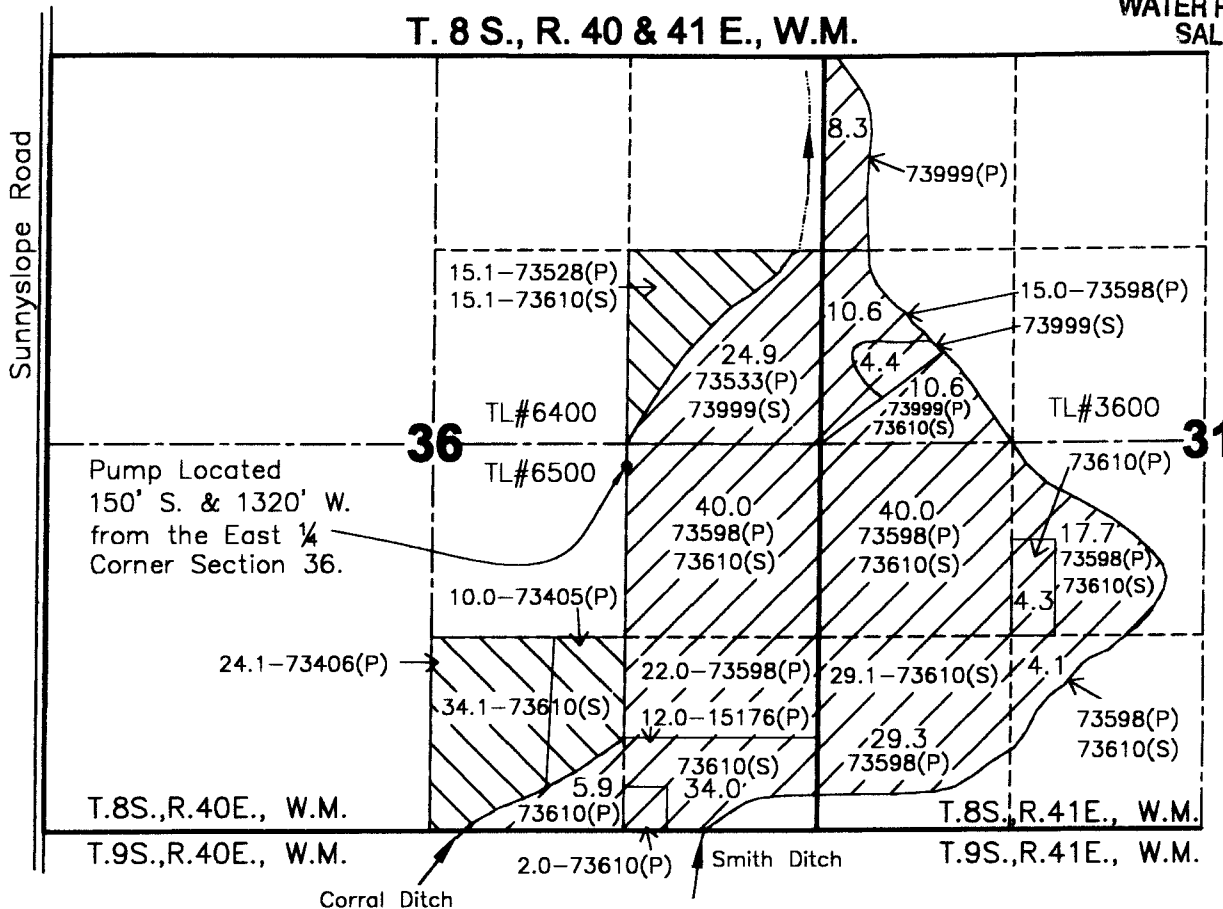
Scale 1" = 1320'

RECEIVED

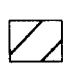
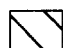
OCT 03 2005

WATER RESOURCES DEPT
SALEM, OREGON

T. 8 S., R. 40 & 41 E., W.M.

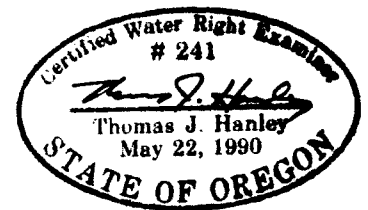


LEGEND

-  Lands Irrigated from Corral Ditch P.O.D.
-  Remaining Rights

FINAL PROOF SURVEY
Change of P.O.D.
In Name of
Peyron Ranch
now Heritage Trail Ranch, LLC
Reference: T-7791

Site Survey September 30, 2005
by Hanley Engineering, Inc.



HANLEY ENGINEERING, INC.
 2043 MAIN STREET
 BAKER CITY, OREGON