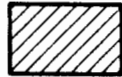


FINAL PROOF MAP FOR PERMIT G-14020 FOR EARL E BROWN & SON'S, INC T6N, R35E

LEGEND

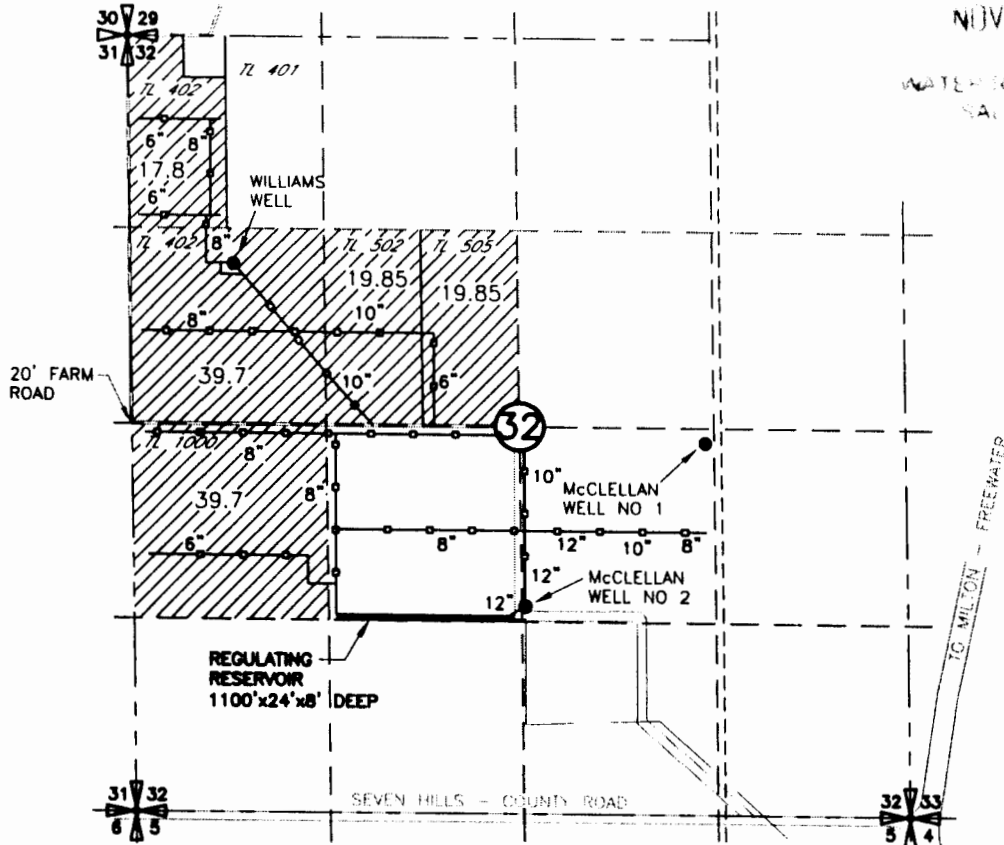


AREA OF FROST PROTECTION
AND TEMPERATURE CONTROL

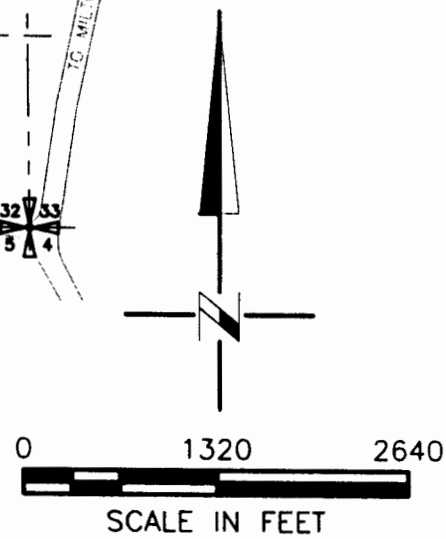
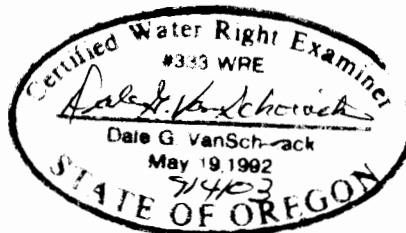
RECEIVED

NOV 15 2003

WATER RESOURCES DEPT.
SALEM, OREGON



POINTS OF APPROPRIATION
McCLELLAN WELL NO 2
LOCATED 1418' N AND 22.1' E FROM THE
S 1/4 CORNER OF SEC 32



NOTE:
THE PURPOSE OF THIS MAP IS TO IDENTIFY THE APPROXIMATE LOCATION
OF THE WATER RIGHT. IT IS NOT INTENDED TO PROVIDE INFORMATION
RELATIVE TO THE LOCATION OF PROPERTY OWNERSHIP BOUNDARY LINES.

DRAWING: H:\CAD\AG\3522\097\352297FP2.DWG
PRINTED BY: rogerw on 09/04/03 08:15 AM
9/04/03

