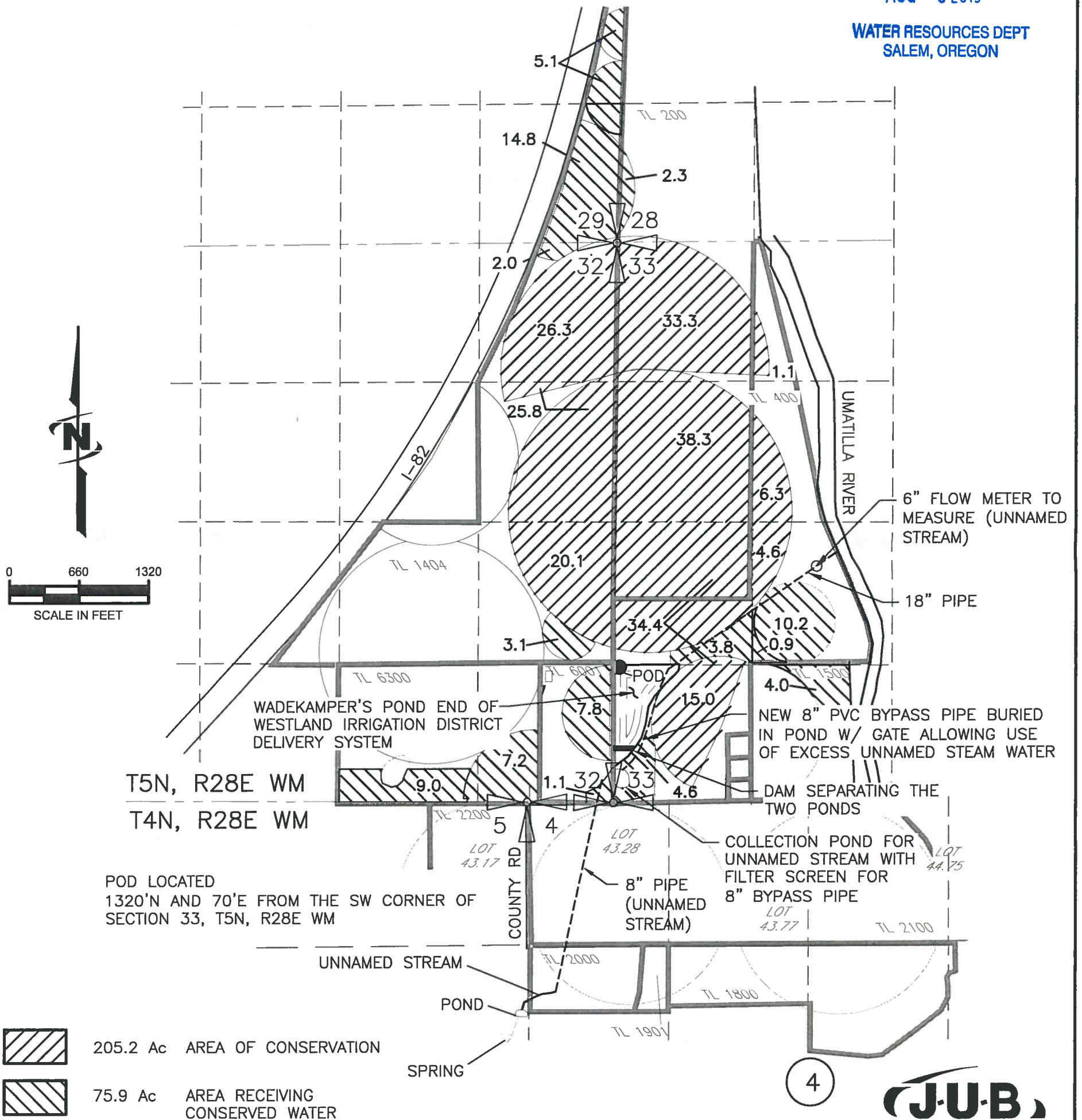


AMENDED 08-04-2015 CONSERVATION APPLICATION
 MAP
 FOR L. WADEKAMPER
 PERMIT 46567 - CERT 83856



RECEIVED

AUG - 6 2015

WATER RESOURCES DEPT
 SALEM, OREGON



POD LOCATED
 1320'N AND 70'E FROM THE SW CORNER OF
 SECTION 33, T5N, R28E WM

-  205.2 Ac AREA OF CONSERVATION
-  75.9 Ac AREA RECEIVING CONSERVED WATER

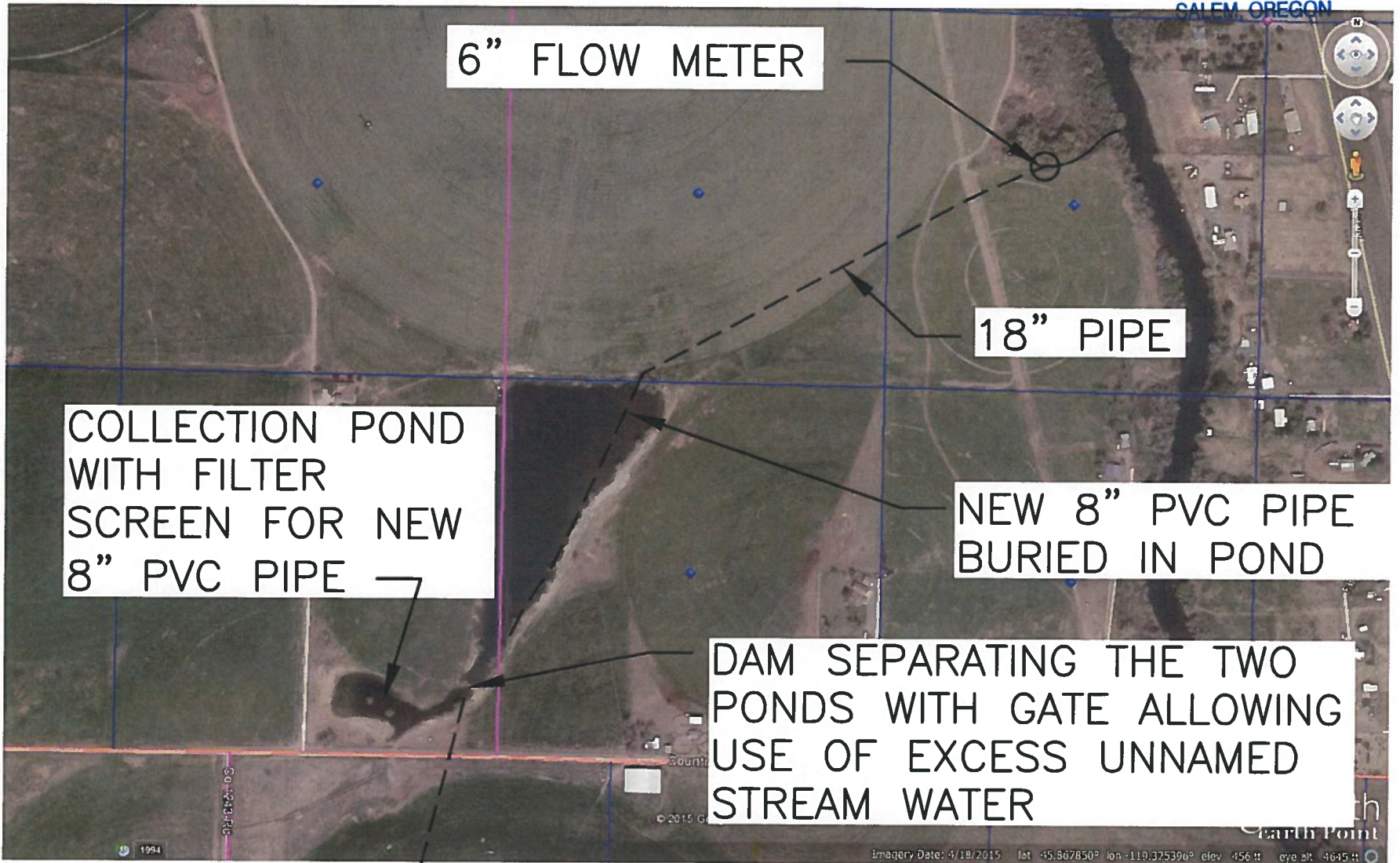
NOTE:
 THE PURPOSE OF THIS MAP IS TO IDENTIFY THE APPROXIMATE LOCATION OF THE WATER RIGHT. IT IS NOT INTENDED TO PROVIDE INFORMATION RELATIVE TO THE LOCATION OF PROPERTY OWNERSHIP BOUNDARY LINES. PIPE LOCATIONS AND SIZES WHERE SHOWN WERE PROVIDED BY FARM OPERATIONAL PERSONNEL AND ARE APPROXIMATE LOCATIONS AND SIZES.

8-05-2015 CONSERVATION AERIAL
PHOTO MAP FOR L. WADEKAMPER

RECEIVED

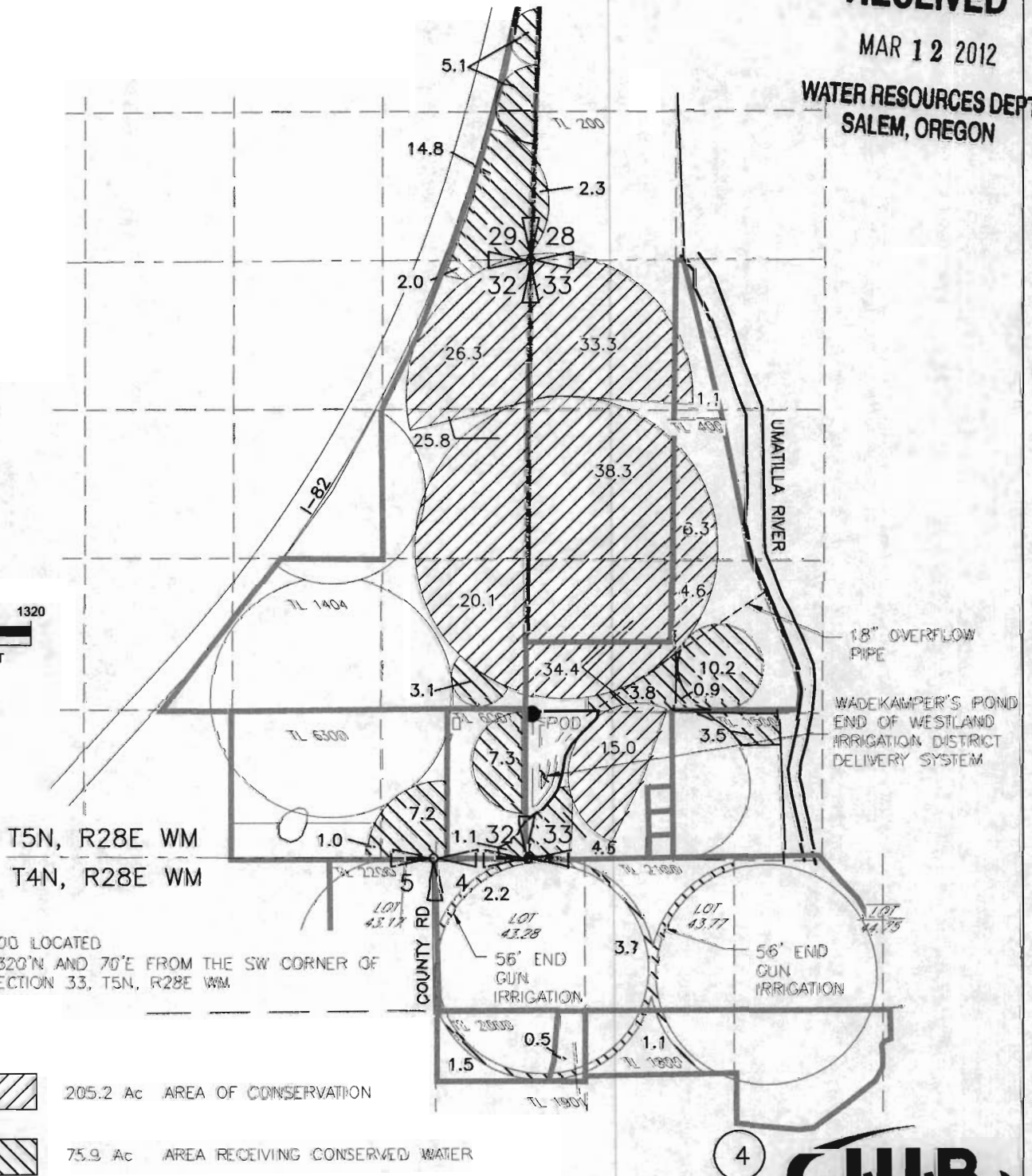
AUG - 6 2015

WATER RESOURCES DEPT
SALEM, OREGON



CONSERVATION APPLICATION MAP FOR L. WADEKAMPER PERMIT 46567 - CERT 83856 2012

RECEIVED
MAR 12 2012
WATER RESOURCES DEPT
SALEM, OREGON



NOTE:
THE PURPOSE OF THIS MAP IS TO IDENTIFY THE APPROXIMATE LOCATION OF THE WATER RIGHT. IT IS NOT INTENDED TO PROVIDE INFORMATION RELATIVE TO THE LOCATION OF PROPERTY OWNERSHIP BOUNDARY LINES. PIPE LOCATIONS AND SIZES WHERE SHOWN WERE PROVIDED BY FARM OPERATIONAL PERSONNEL AND ARE APPROXIMATE LOCATIONS AND SIZES.

DRAWING: F:\Project\30-08-016 - Porfly Water Rights Consulting\DC Misc Engineering\Cad\WADEKAMPER\30-08-016 WADE CON 12-10.dwg
PRINTED BY: mwillard on 03/02/12 05:41 AM