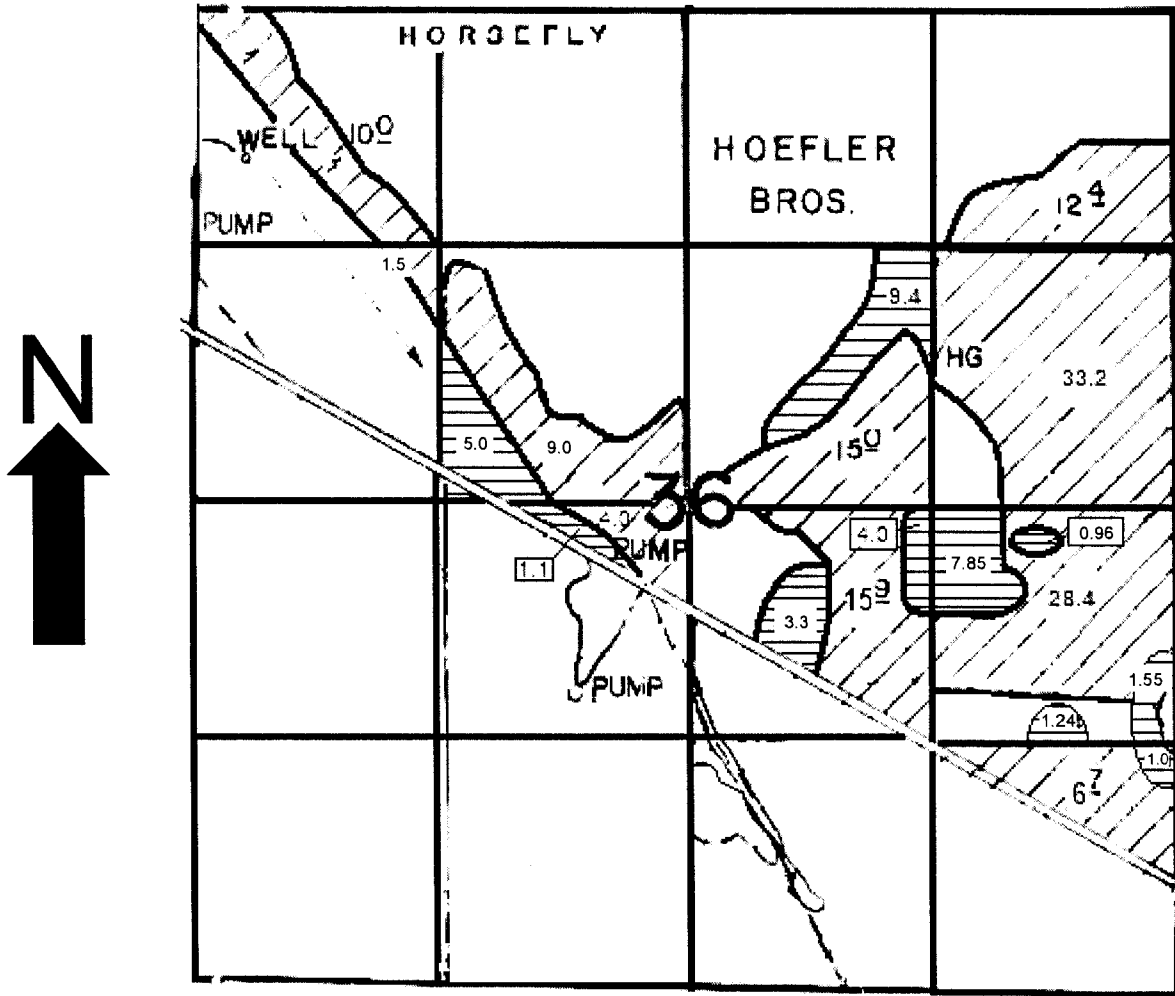
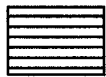


HORSEFLY IRRIGATION DISTRICT  
 APPLICATION G-9125, PERMIT G-8528

TOWNSHIP 38 SOUTH, RANGE 11 ½ EAST, W.M. SEC. 36



WELL LOCATION: 870 FEET SOUTH AND 310 FEET EAST FROM NW CORNER, SECTION 36, IN THE NW NW, T. 38 S., R. 11.5 E., W.M.



PRIMARY IRRIGATION (36.7 TOTAL ACRES)

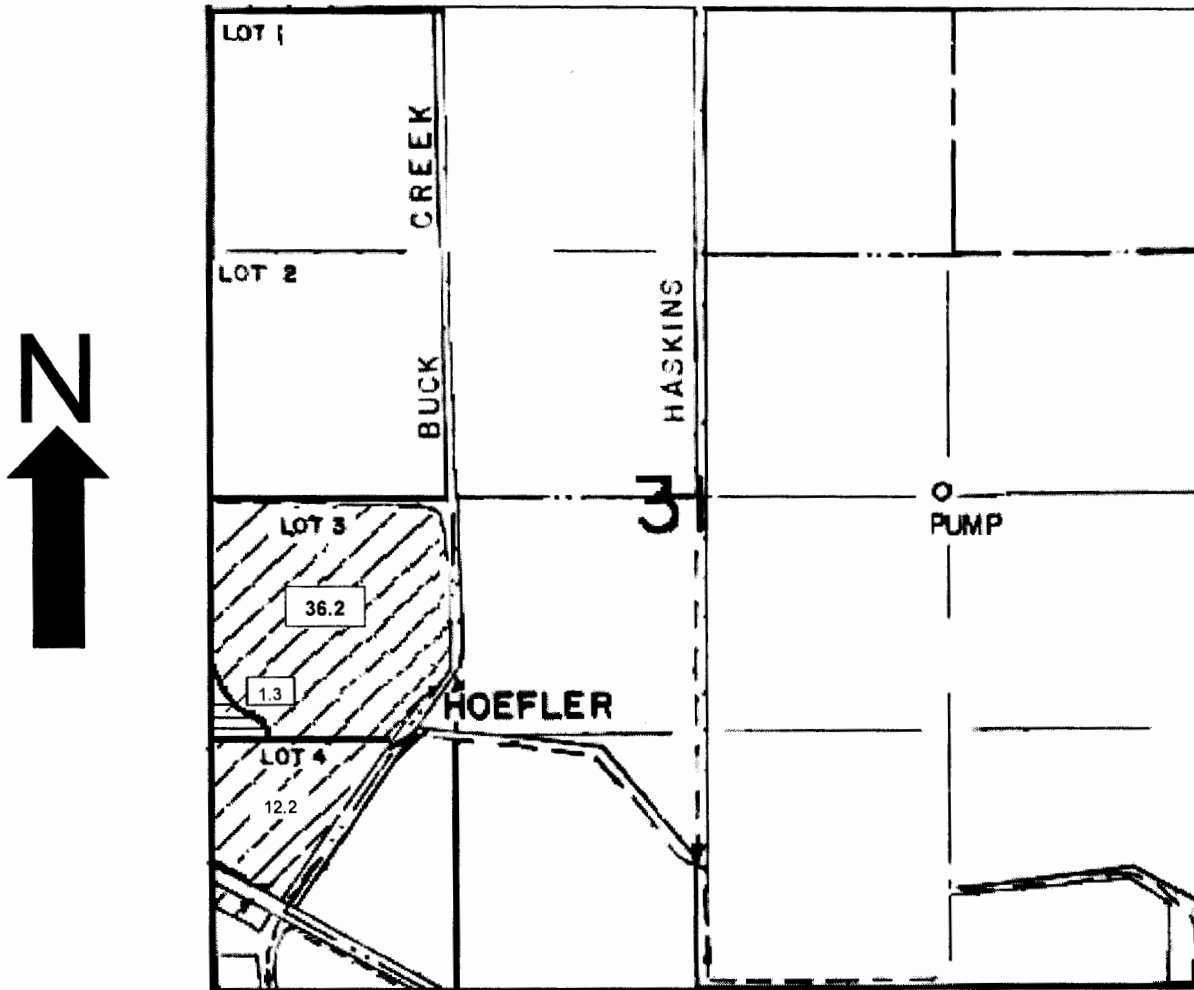


SUPPLEMENTAL IRRIGATION (SUPPLEMENTAL TO LOST RIVER AND TRIBUTARIES ADJUDICATION) (184.5 TOTAL ACRES)

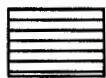
MAPS NOT TO SCALE

HORSEFLY IRRIGATION DISTRICT  
 APPLICATION G-9125, PERMIT G-8528

TOWNSHIP 38 SOUTH, RANGE 11 EAST, W.M. SEC. 31



WELL LOCATION: 870 FEET SOUTH AND 310 FEET EAST FROM NW CORNER, SECTION 36, IN THE NW NW, T. 38 S., R. 11.5 E., W.M.



PRIMARY IRRIGATION (36.7 TOTAL ACRES)



SUPPLEMENTAL IRRIGATION (SUPPLEMENTAL TO LOST RIVER AND TRIBUTARIES ADJUDICATION (184.5 TOTAL ACRES)

MAPS NOT TO SCALE