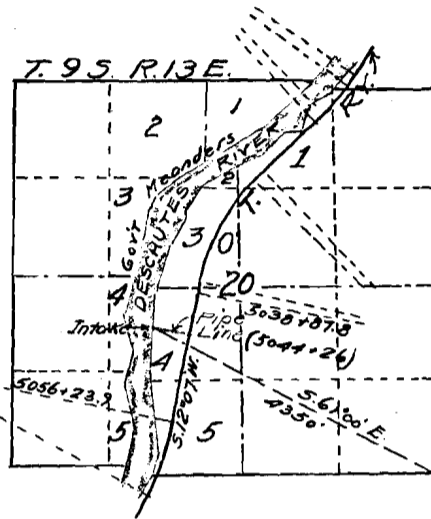


P. 808 0915

—MECCA—

WATER STATION.



OFFICE OF STATE ENGINEER  
RECEIVED  
AUG 31 1911  
SAULTS, OREGON

Application No. 1670  
Permit No. 808

I, John B. Morton, of Opal City, Oregon, do hereby certify that this map was made from notes taken during an actual survey made under my immediate supervision on the 26<sup>th</sup> day of May 1911, and that it correctly represents the works described in the accompanying application together with the location of streams in the immediate vicinity.

John B. Morton  
Surveyor.

OREGON TRUNK RY.

MAP ACCOMPANYING APPLICATION FOR PERMIT TO APPROPRIATE WATER FROM DESCHUTES RIVER IN SEC. 20, T. 9 S. R. 13 E. W.M.

Office of Chief Engr.

Scale: 2 in. = 1 mi.

July 25<sup>th</sup> 1911.

1910