

# CLAIM OF BENEFICIAL USE

## FINAL PROOF MAP

T.17 S., R.4W., W.M., SECTIONS 10 AND 15

Application G-14065, Permit G-13604, and R-80304

September 20, 2004

THIS MAP WAS PREPARED FOR THE PURPOSE OF IDENTIFYING THE LOCATION OF A WATER RIGHT ONLY AND IS NOT INTENDED TO PROVIDE LEGAL DIMENSIONS OR LOCATION OF PROPERTY OWNERSHIP LINES.

### PLACE OF USE

#### (IRRIGATED AREAS)

T.17S., R.4W., SEC. 10

NE 1/4 SE 1/4 = 0.505  
 NW 1/4 SE 1/4 = 1.136 AC  
 SW 1/4 SE 1/4 = 3.568 AC  
 SE 1/4 SE 1/4 = 0.517 AC

T17S, R4W, SEC 15

NE 1/4 NE 1/4 = 0.018 AC \*

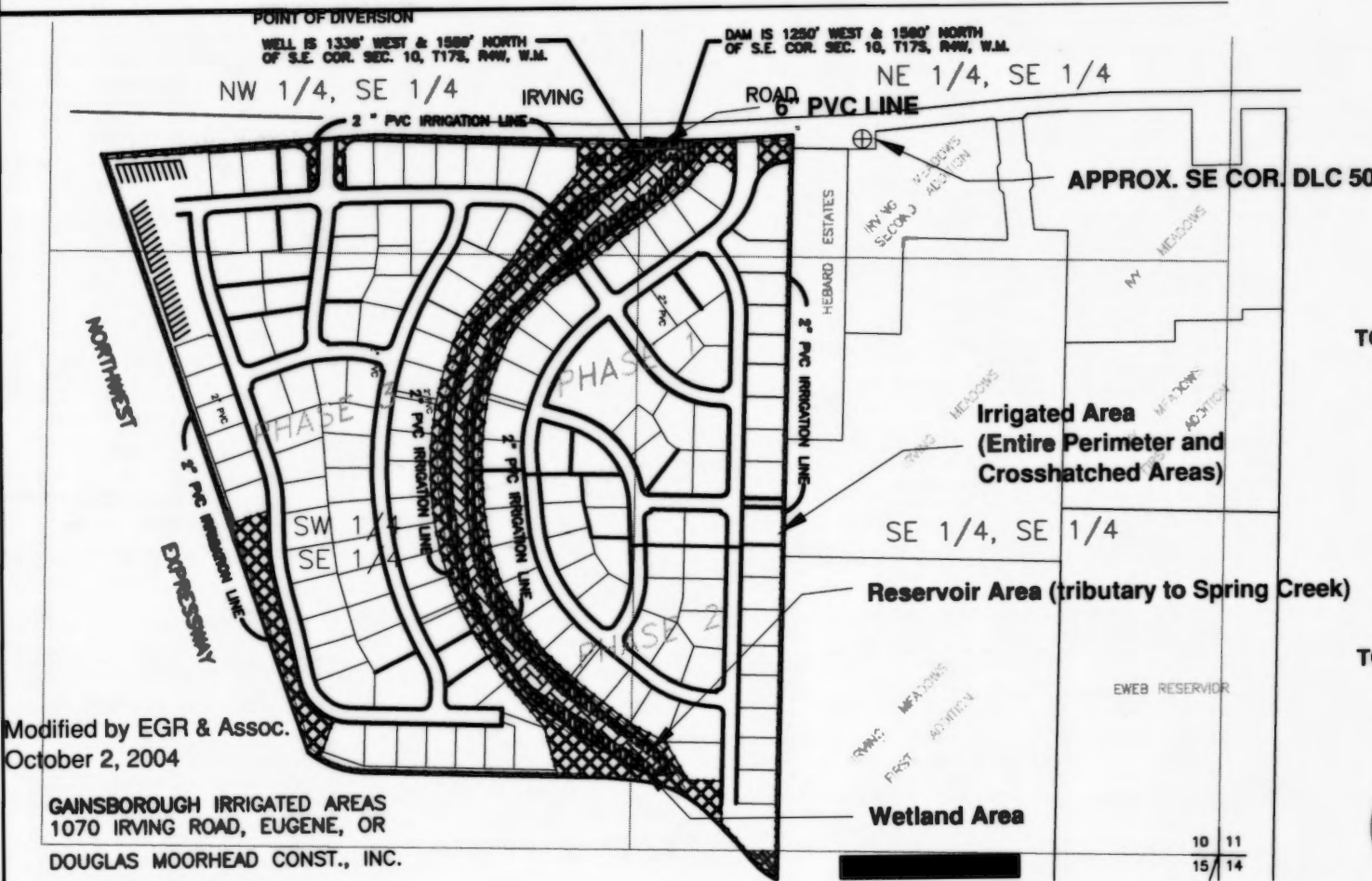
TOTAL IRRIGATED AREA= 5.744 AC

#### (RESERVOIR/WETLAND MAINTENANCE)

T.17 S., R.4W., SEC. 10

NE 1/4 SE 1/4 = 0.114 AC  
 NW 1/4 SE 1/4 = 0.182 AC  
 SW 1/4 SE 1/4 = 0.806 AC  
 SE 1/4 SE 1/4 = 0.032 AC

TOTAL RESERVOIR AREA = 1.13 AC



Modified by EGR & Assoc.  
 October 2, 2004

GAINSBOROUGH IRRIGATED AREAS  
 1070 IRVING ROAD, EUGENE, OR

DOUGLAS MOORHEAD CONST., INC.

#### POINT OF DIVERSION

#### WELL #1

1336' WEST & 1559' NORTH OF S.E. COR. SEC. 10, T.17S., R.4W., W.M.

#### PIPING PUMP 1

WELL TO DIFFUSER:




7 FEET OF 4 INCH STEEL PIPE, INTO 65 FEET OF 6 INCH PVC PIPE TO DIFFUSER AT DAM.

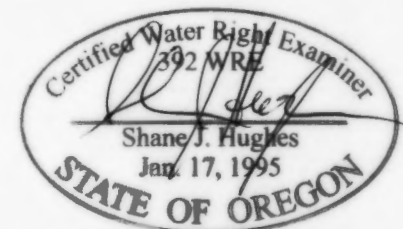
#### PIPING PUMP 2:

WELL TO IRRIGATION SYSTEM

5,080 FEET OF 2 INCH PVC MAINLINE WITH LATERALS TO 2,972 DRIP HEADS, AND 192 SPRINKLER HEADS AND 2 HOSE BIBS

0 400  
 SCALE 1" = 400'

-  2" PVC MAIN IRRIGATION LINE
-  APPROXIMATE AREA OF RESERVOIR
-  IRRIGATION AREA (Includes wetlands interior, and entire perimeter of project) = 5.74 ACRES



EXPIRATION DATE: 6/30/09

**EGR & Associates, Inc.**  
 Engineers and Geologists

2535B Prairie Road  
 Eugene, Oregon 97402

(541) 688-8322  
 Fax (541) 688-8087

Map was revised by WRD to include shaded portion

OF NENE 0.018ac in Sec.15 4.1.16 J. Joye

V:\1004 Gainesboro\95 1004 Water Rights\CWRE map revised.dwg LAYOUT=Layout1 Oct 21, 2004 - 12:12pm

WATER RESOURCES DEPT  
 SALEM, OREGON  
 06:12:2004