

CLAIM OF BENEFICIAL USE

FINAL PROOF MAP

T.17 S., R.4W., W.M., SECTIONS 10 AND 15
 Application G-14065, Permit G-13604, and R-80304
 September 20, 2004

THIS MAP WAS PREPARED FOR THE PURPOSE OF IDENTIFYING THE LOCATION OF A WATER RIGHT ONLY AND IS NOT INTENDED TO PROVIDE LEGAL DIMENSIONS OR LOCATION OF PROPERTY OWNERSHIP LINES.

PLACE OF USE

(IRRIGATED AREAS)

T.17S., R.4W., SEC. 10

NE 1/4 SE 1/4 = 0.505 AC

NW 1/4 SE 1/4 = 1.136 AC

SW 1/4 SE 1/4 = 3.568 AC

SE 1/4 SE 1/4 = 0.517 AC

T17S, R4W, SEC 15

NE 1/4 NE 1/4 = 0.018 AC

TOTAL IRRIGATED AREA = 5.744 AC

(RESERVOIR/WETLAND MAINTENANCE)

T.17 S., R.4W., SEC. 10

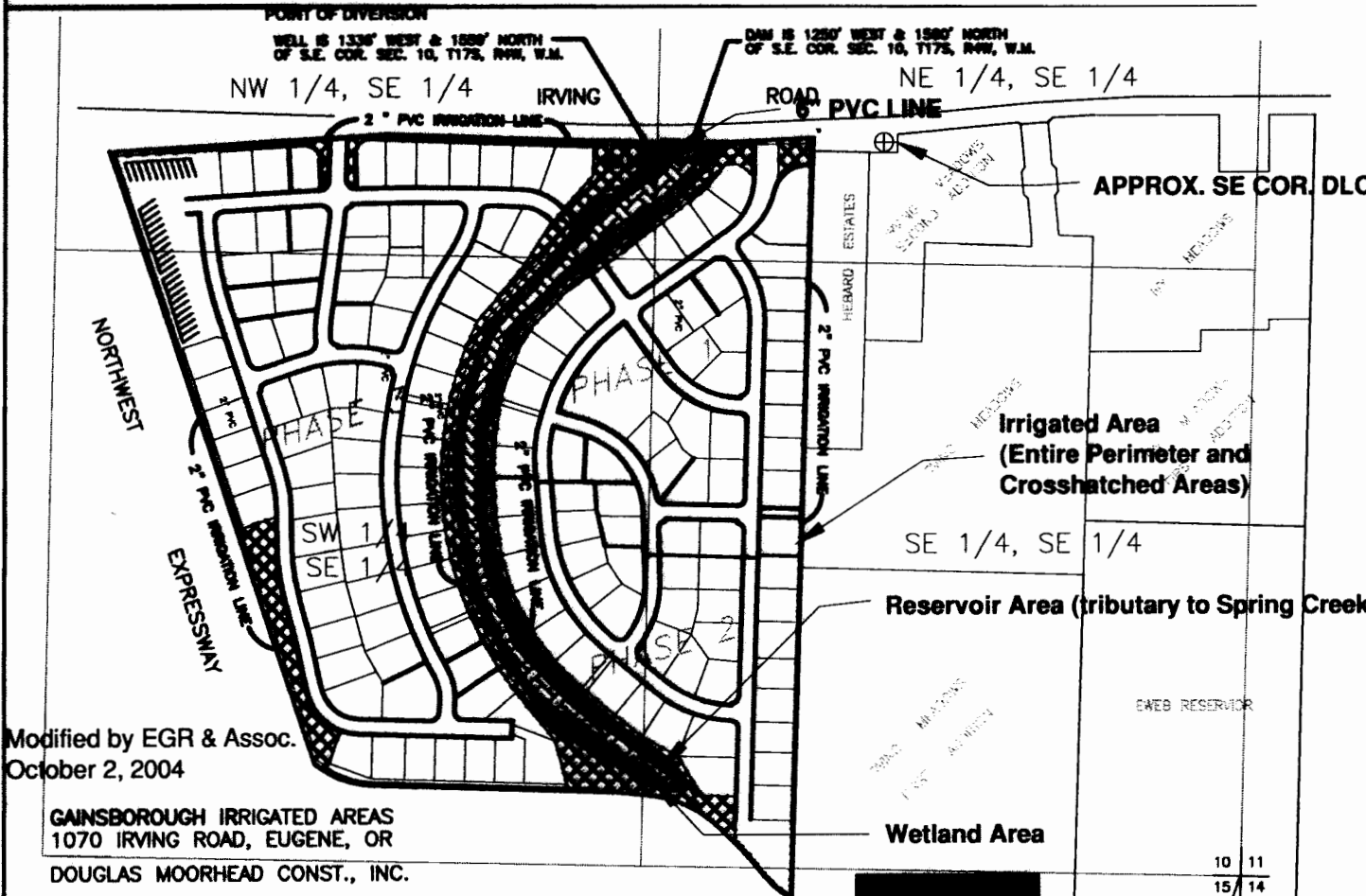
NE 1/4 SE 1/4 = 0.114 AC

NW 1/4 SE 1/4 = 0.182 AC

SW 1/4 SE 1/4 = 0.806 AC

SE 1/4 SE 1/4 = 0.032 AC

TOTAL RESERVOIR AREA = 1.13 AC



Modified by EGR & Assoc.
 October 2, 2004

GAINSBOROUGH IRRIGATED AREAS
 1070 IRVING ROAD, EUGENE, OR
DOUGLAS MOORHEAD CONST., INC.

POINT OF DIVERSION

WELL #1

1336' WEST & 1559' NORTH OF S.E. COR. SEC. 10, T.17S., R.4W., W.M.

PIPING PUMP 1

WELL TO DIFFUSER:

7 FEET OF 4 INCH STEEL PIPE, INTO 65 FEET OF 6 INCH PVC PIPE TO DIFFUSER AT DAM.

PIPING PUMP 2:

WELL TO IRRIGATION SYSTEM

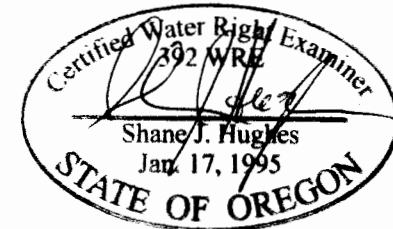
5,080 FEET OF 2 INCH PVC MAINLINE WITH LATERALS TO 2,972 DRIP HEADS, AND 192 SPRINKLER HEADS AND 2 HOSE BIBS

2" PVC MAIN IRRIGATION LINE

APPROXIMATE AREA OF RESERVOIR

IRRIGATION AREA (Includes wetlands interior, and entire perimeter of project) = 5.74 ACRES

0 400
 SCALE 1" = 400'



EXPIRATION DATE: 6/30/05



EGR & Associates, Inc.

Engineers and Geologists

2535B Prairie Road
 Eugene, Oregon 97402

(541) 688-8322
 Fax (541) 688-8087

WATER RESOURCES DEPT
 SALEM, OREGON
 OCT 22 2004