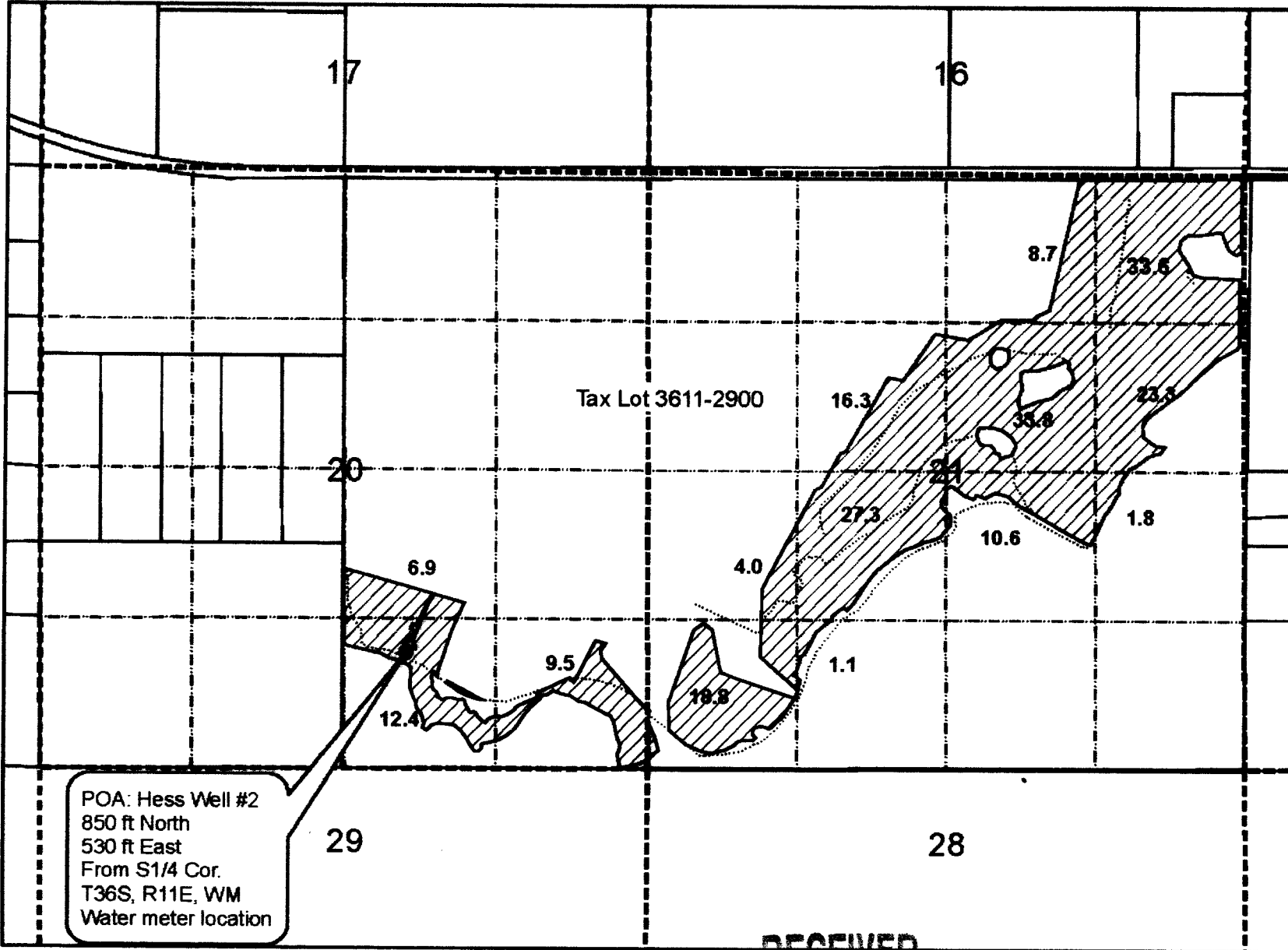


# Claim of Beneficial Use

Application G15195  
Permit G13961  
T36S, R11E, WM  
Sec 20 & 21



## Legend

- Irrigated
- Ditch
- Section line
- Quarter-quarter line



Feet  
1,320

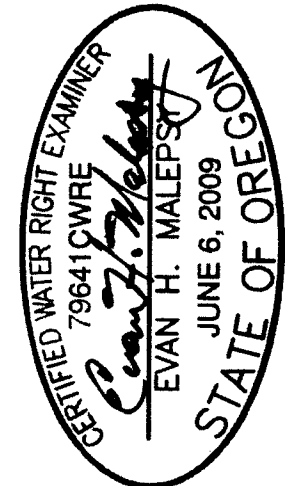


POA: Hess Well #2  
850 ft North  
530 ft East  
From S1/4 Cor.  
T36S, R11E, WM  
Water meter location

RECEIVED

WATER RESOURCES DEPT  
SALEM, OREGON

This map is not intended to provide legal dimensions or locations of property ownership lines.



RENEWS: 12/31/2012