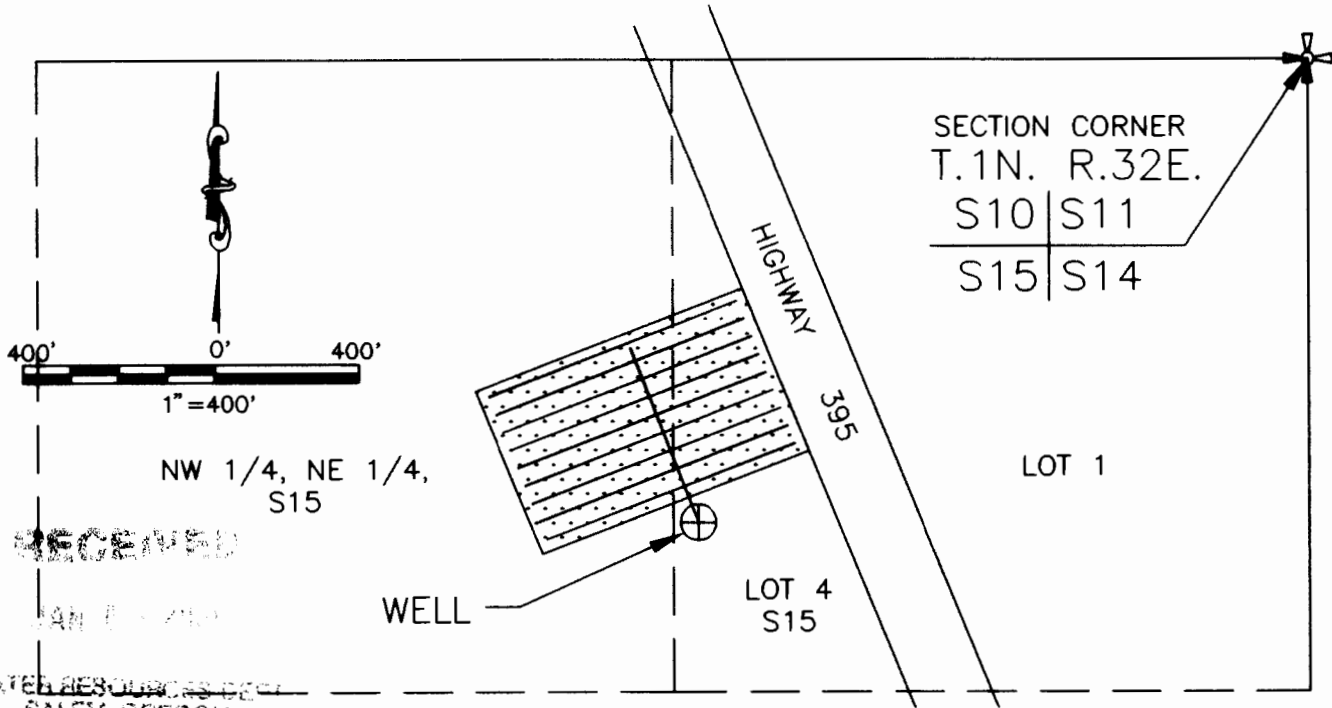


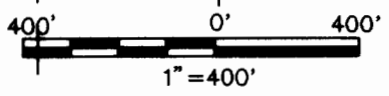
# FINAL PROOF SURVEY AND CLAIM OF BENEFICIAL USE

LOCATED WITHIN  
GOVERNMENT LOT 4 AND NW 1/4, NE 1/4, SECTION 15,  
T.1N., R.32E., W.M.,  
UMATILLA COUNTY, OREGON  
NEW POINT OF APPROPRIATION

APPLICANTS: ROY L. AND AUDREY L. COMRIE  
TRANSFER 8301 SPECIAL ORDER V.53, PAGE 1184



SECTION CORNER  
T.1N. R.32E.  
S10 | S11  
S15 | S14



NW 1/4, NE 1/4,  
S15

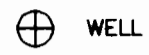
LOT 1

WELL

LOT 4  
S15

RECEIVED  
JAN 1 2001  
WATER RESOURCES DEPT.  
SALEM, OREGON

### LEGEND



WELL



AREA IRRIGATED

— BURIED 3" PVC PIPE  
DISTRIBUTION LINES W/HEADS  
ON 40 FOOT CENTERS



SECTION CORNER

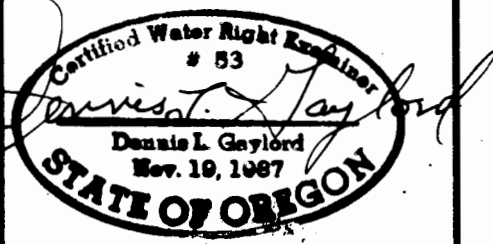
### AREA BENEFICIALLY IRRIGATED

GOV'T LOT 4:	1.93 ACRES
NW 1/4, NE 1/4:	3.07 ACRES
TOTAL:	5.00 ACRES

CORNER TIE:  
THE WELL IS LOCATED  
965 FEET SOUTH AND  
1,270 FEET WEST OF THE  
NORTHEAST CORNER OF  
SECTION 15, T.1N.,  
R.32E., W.M.

THIS MAP IS PREPARED  
FOR THE EXPRESS  
PURPOSE TO SHOW WATER  
APPROPRIATION AND USE.  
IT IS NOT INTENDED TO  
SHOW OR LOCATE  
PROPERTY OWNERSHIP  
LINES.

©



Renews 6/30/2001

DENNIS L. GAYLORD,  
CWRE  
71614 S.W. LAKE DRIVE  
PENDLETON, OR 97801  
(541)-276-6260  
DECEMBER, 2000

Mill Creek Drafting