

MAP TO ACCOMPANY APPLICATION
TO CHANGE PLACE OF USE AND POINT OF
APPROPRIATION
FOR
DOUBLE J RANCH, LLC

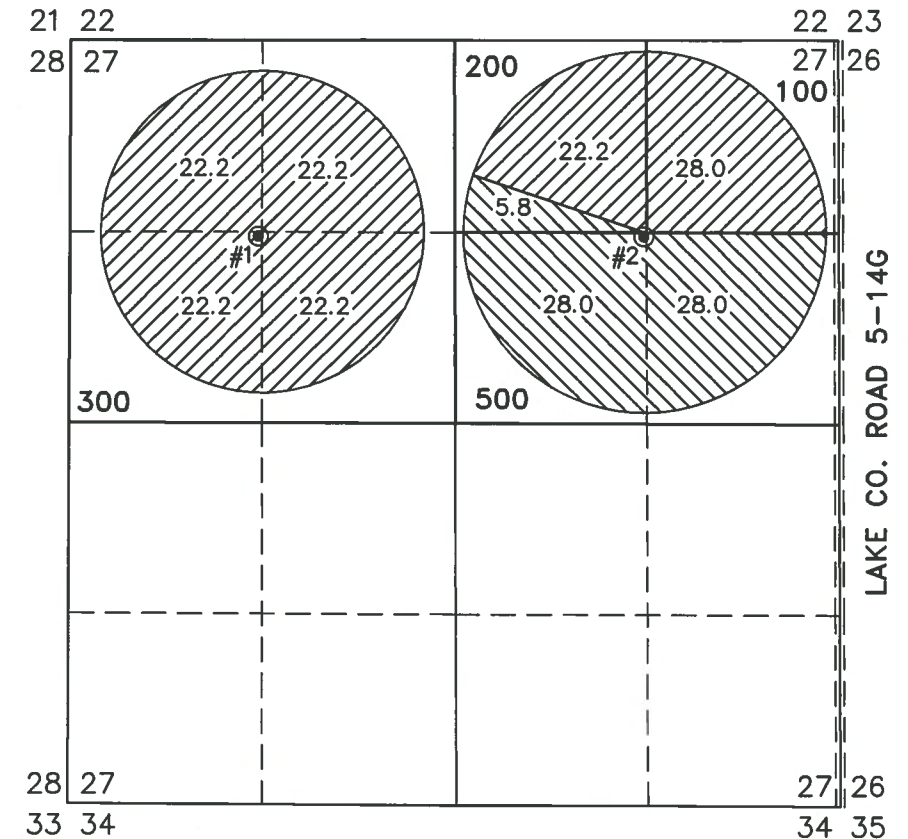
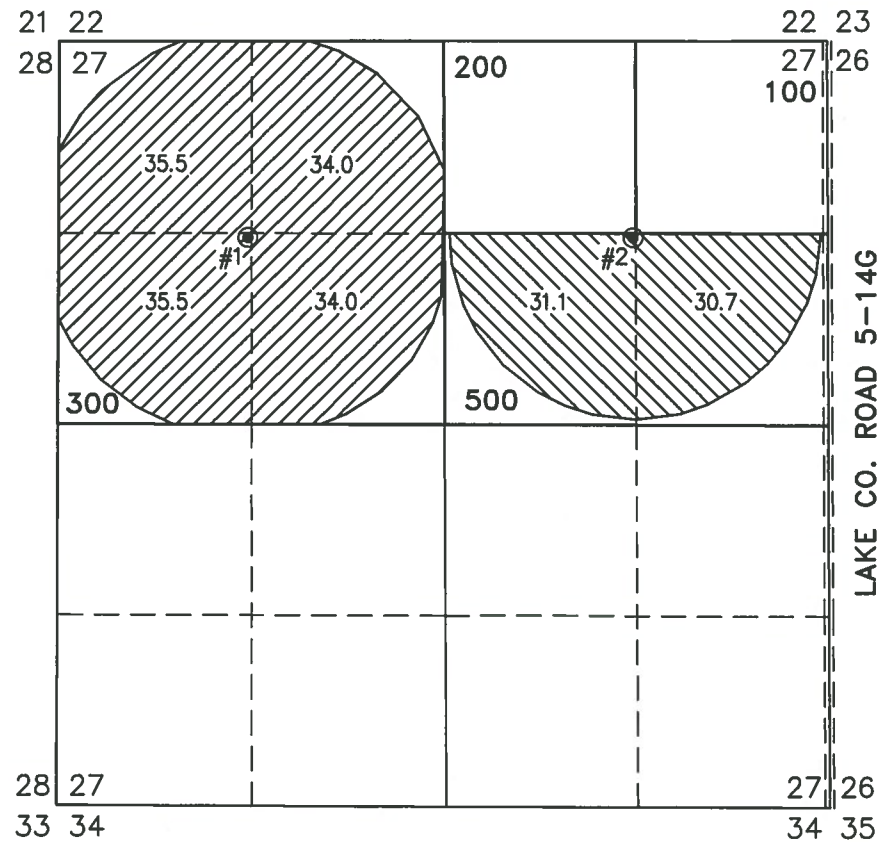
RECEIVED BY OWRD

NOV 30 2015


SALEM, OR


FROM
TAX LOTS 100, 200, 300, & 500
IN SECTION 27, TOWNSHIP 27 SOUTH, RANGE 16 EAST, W.M.
LAKE COUNTY, OREGON

TO
TAX LOTS 100, 200, 300, & 500
IN SECTION 27
TOWNSHIP 27 SOUTH, RANGE 16 EAST, W.M.
LAKE COUNTY, OREGON




LAKE 908 G-8982
● #1 WELL LOCATED IN THE SW 1/4 NW 1/4 AND 1350 FEET SOUTH AND 1350 FEET WEST FROM THE NORTH 1/4 CORNER OF SECTION 27.
LAKE 50565 G-9018
● #2 WELL LOCATED IN THE SW 1/4 NE 1/4 AND 1352.7 FEET SOUTH AND 1332.4 FEET WEST FROM THE NE CORNER OF SECTION 27.

 139.0 ACRES WATER RIGHTS FROM C #52875 (G-8982) TRANSFERRED, AS SHOWN.

 61.8 ACRES WATER RIGHTS FROM C #76941 (G-9018) TRANSFERRED, AS SHOWN.

THIS MAP IS FOR THE PURPOSE OF LOCATING A WATER RIGHT ONLY AND HAS NO INTENT TO PROVIDE LEGAL DIMENSIONS OR THE LOCATION OF PROPERTY LINES.

PROJECT No. 15-120	<p>ALL POINTS ENGINEERING & SURVEYING, INC.</p> <p>P.O. BOX 767 TERREBONNE, OREGON 97760 (541) 548-5833 PH Scott@APEandS.com www.APEandS.com</p>	
<p>PREPARED AT THE REQUEST OF: DOUBLE J RANCH, LLC P.O. BOX 766 CHRISTMAS VALLEY, OR 97641</p>		

RENEWAL DATE: 12/31/2016