

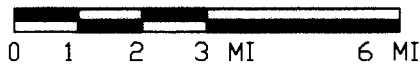
WASCO COUNTY, OREGON

INDEX:

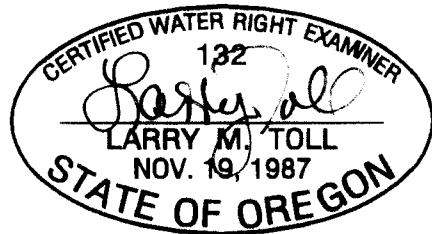
- SHEET 1 COVER & VICINITY MAP
- SHEET 2 DIVERSION POINT #1  
TAX LOT 600, 2N-15, IN THE NW.1/4 OF THE S.E.1/4, SECTION 22, TWP.2 N., RANGE 15 E. W.M. (DESCHUTES RIVER PARK)
- SHEET 3 DIVERSION POINT #2  
TAX LOT 100, 1N-13-3A IN THE S.E.1/4 OF THE N.E.1/4, SEC. 3, TWP.1 N., RANGE 13 E. W.M. (THE DALLES MARINA BOAT RAMP)
- SHEET 4 DIVERSION POINT #3  
TAX LOTS 200 & 300, 2N-13-34CC IN THE SW.1/4 OF SW.1/4, SEC. 34, TWP.2 N., RANGE 13 E. W.M. (THE DALLES IRRIGATION DIST.) PERMIT #28546
- SHEET 5 DIVERSION POINT #4  
TAX LOT 200, 2N-12-2C IN THE S.E.1/4 OF S.W.1/4, SEC. 2, TWP.2 N., RANGE 12 E. W.M. (MAYER STATE PARK BOAT RAMP, ROWENA)
- SHEET 6 TRANSFER AREA OF PLACE OF USE (ALL OF WASCO COUNTY)

**CLAIM OF BENEFICIAL USE MAP**

SCALE: 1" = 3 MILES



TRANSFER No. 8584  
 APPLICATION No. 27244  
 IN THE NAME OF:  
WASCO COUNTY  
 DATE: JULY 14, 2010



EXPIRES: 06/30/2012

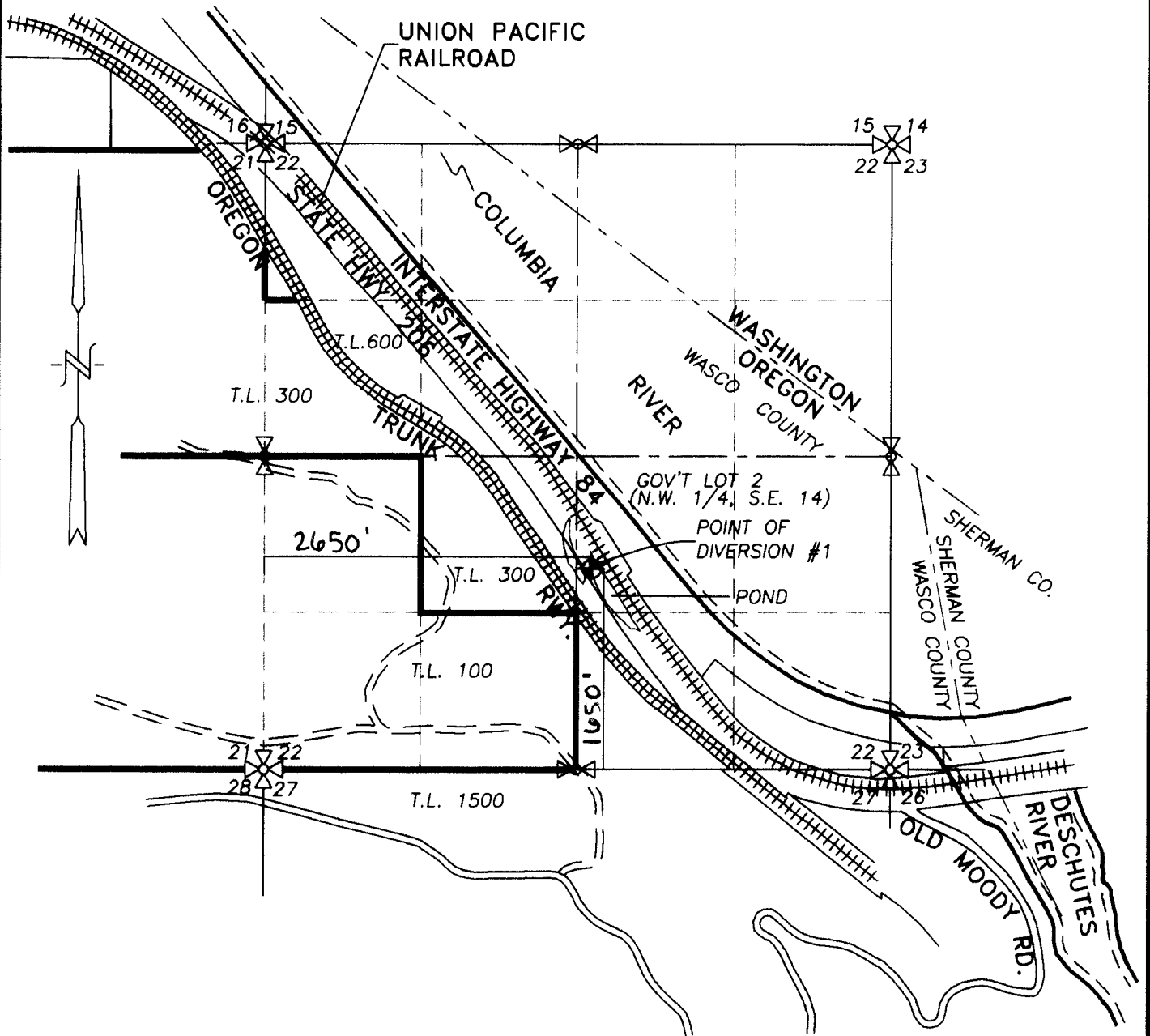
BY: **TENNESON ENGINEERING CORP.**  
 3313 W. 2ND. STREET, SUITE 100  
 THE DALLES, OREGON. 97058  
 PH. 541-296-9177  
 FAX 541-296-6657



**NOTE:**

"THIS MAP IS NOT INTENDED TO PROVIDE DIMENSIONS OR LOCATIONS OF PROPERTY OWNERSHIP LINES."

SECTION 22, TWP. 12N. RANGE 15 E. W.M.  
 WASCO COUNTY, OREGON



**CLAIM OF BENEFICIAL USE MAP**  
**(DIVERSION POINT #1)**

SCALE: 1" = 1320'



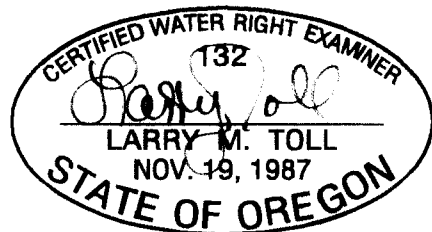
TRANSFER No. 8584

APPLICATION No. 27244

IN THE NAME OF:  
WASCO COUNTY

DATE: JULY 14, 2010

BY: **TENNESON ENGINEERING CORP.**  
 3313 W. 2ND. STREET, SUITE 100  
 THE DALLES, OREGON. 97058  
 PH. 541-296-9177  
 FAX 541-296-6657



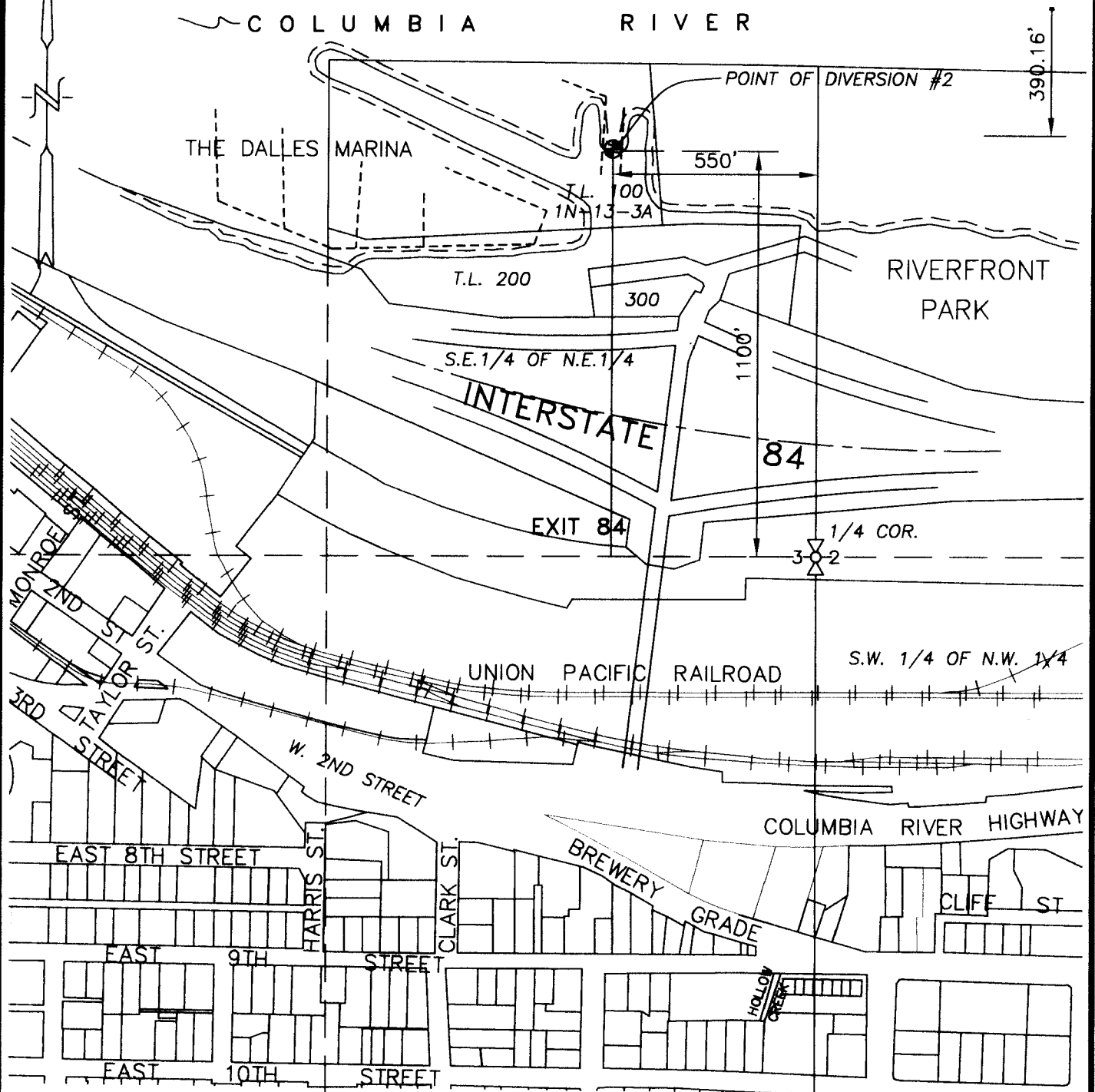
EXPIRES: 06/30/2012

**NOTE:**

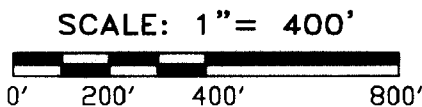
"THIS MAP IS NOT INTENDED TO PROVIDE DIMENSIONS OR LOCATIONS OF PROPERTY OWNERSHIP LINES."

This map has been revised by WRD to reflect the correct township and correct measured distance for POD 1 - 5/15/WRD 4-28-16 W.O. #8213wr

SECTION 3, TWP.1 N. RANGE 13 E. W.M.  
THE DALLES, WASCO COUNTY, OREGON



**CLAIM OF BENEFICIAL USE MAP**  
**(DIVERSION POINT #2)**



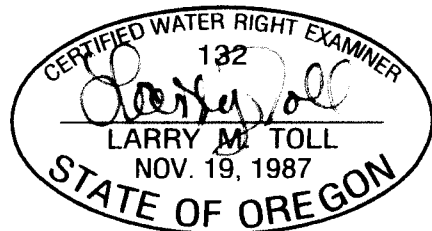
TRANSFER No. 8584

APPLICATION No. 27244

IN THE NAME OF:  
WASCO COUNTY

DATE: JULY 14, 2010

BY: **TENNESON ENGINEERING CORP.**  
3313 W. 2ND. STREET, SUITE 100  
THE DALLES, OREGON. 97058  
PH. 541-296-9177  
FAX 541-296-6657

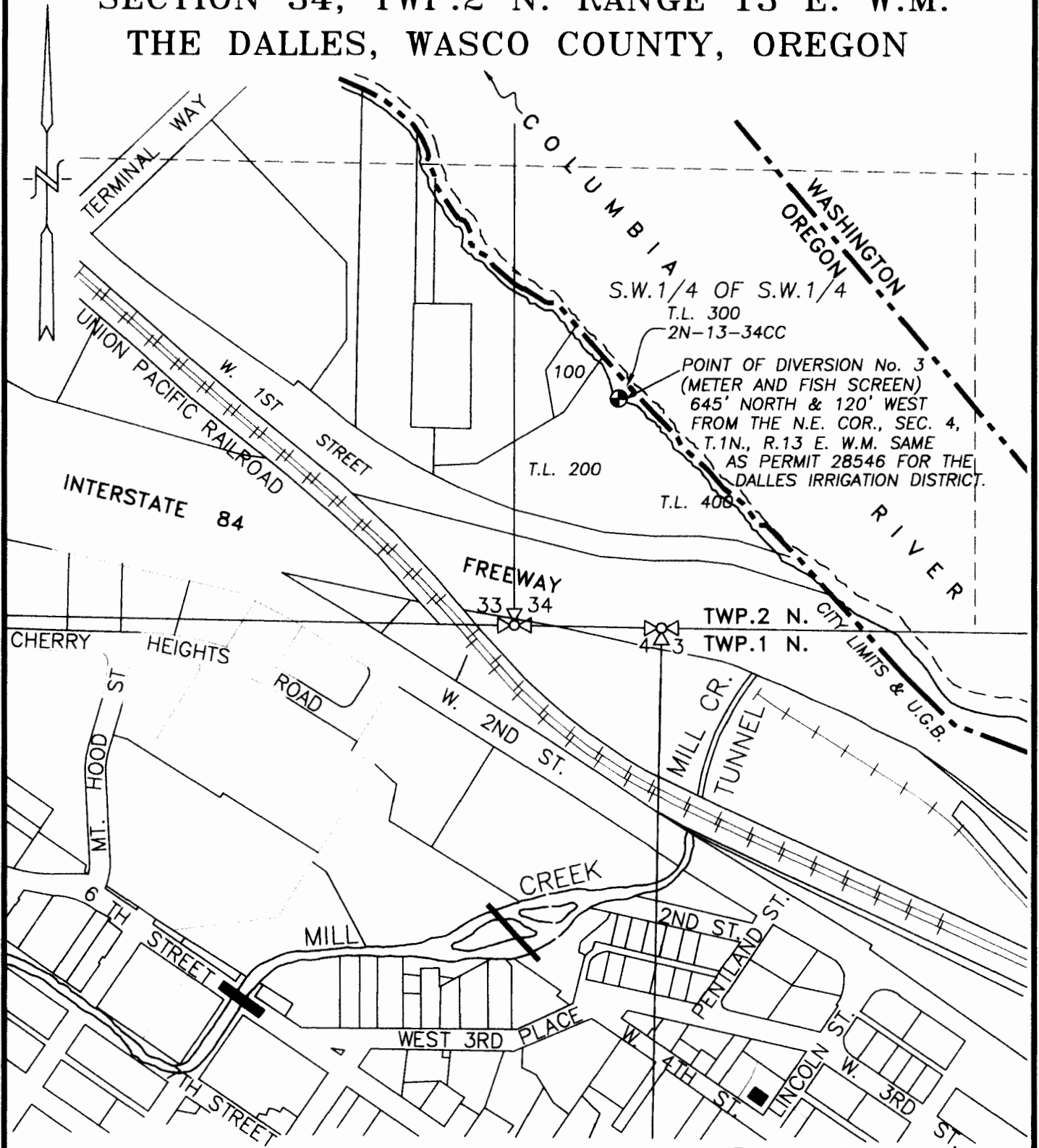


EXPIRES: 06/30/2012

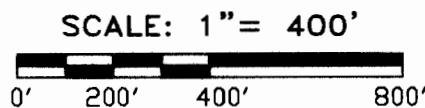
**NOTE:**

"THIS MAP IS NOT INTENDED TO PROVIDE DIMENSIONS OR LOCATIONS OF PROPERTY OWNERSHIP LINES."

SECTION 34, TWP.2 N. RANGE 13 E. W.M.  
THE DALLES, WASCO COUNTY, OREGON



**CLAIM OF BENEFICIAL USE MAP**  
**(DIVERSION POINT #3)**



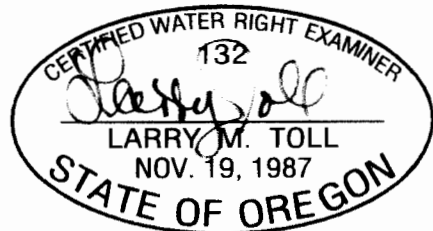
TRANSFER No. 8584

APPLICATION No. 27244

IN THE NAME OF:  
WASCO COUNTY

DATE: JULY 14, 2010

BY: **TENNESON ENGINEERING CORP.**  
3313 W. 2ND. STREET, SUITE 100  
THE DALLES, OREGON. 97058  
PH. 541-296-9177  
FAX 541-296-6657

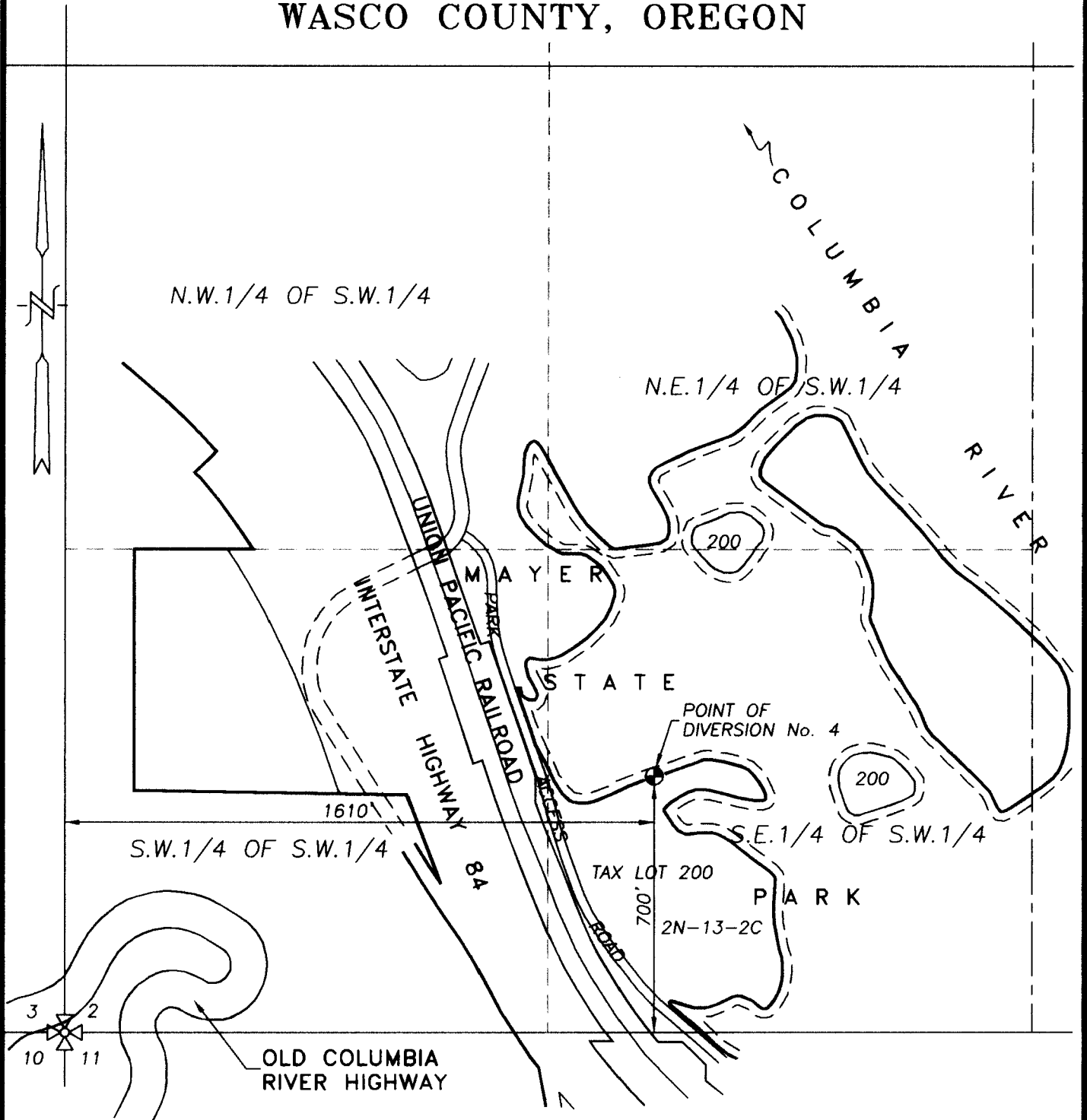


EXPIRES: 06/30/2012

**NOTE:**

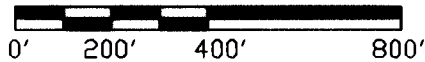
"THIS MAP IS NOT INTENDED TO PROVIDE DIMENSIONS OR LOCATIONS OF PROPERTY OWNERSHIP LINES."

SECTION 2, TWP.2 N. RANGE 12 E. W.M.  
 WASCO COUNTY, OREGON



**CLAIM OF BENEFICIAL USE MAP**  
**(DIVERSION POINT #4)**

SCALE: 1" = 400'



TRANSFER No. 8584

APPLICATION No. 27244

IN THE NAME OF:  
WASCO COUNTY

DATE: JULY 14, 2010

BY: **TENNESON ENGINEERING CORP.**  
 3313 W. 2ND. STREET, SUITE 100  
 THE DALLES, OREGON. 97058  
 PH. 541-296-9177  
 FAX 541-296-6657

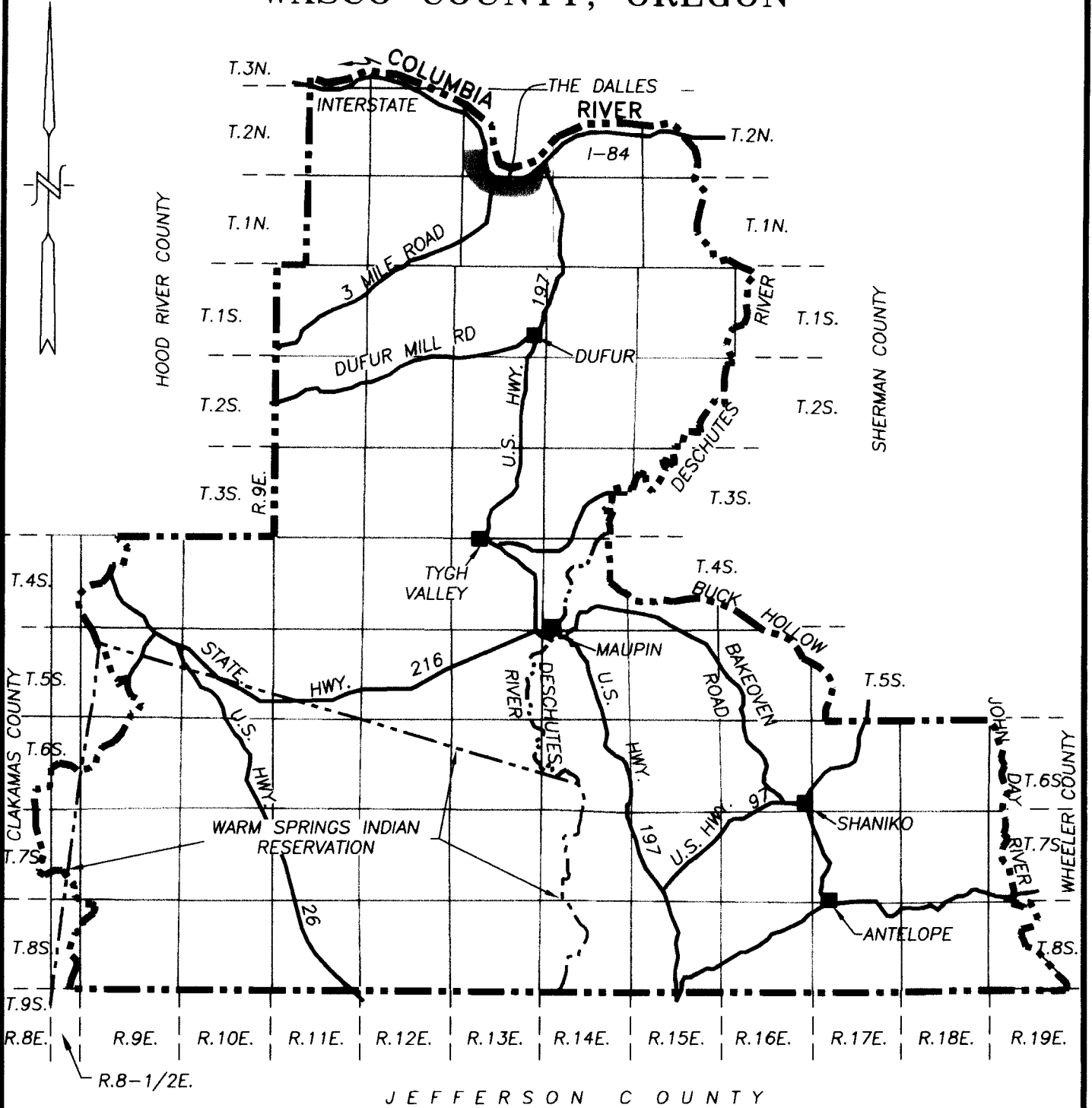


EXPIRES: 06/30/2012

**NOTE:**

"THIS MAP IS NOT INTENDED TO PROVIDE DIMENSIONS OR LOCATIONS OF PROPERTY OWNERSHIP LINES."

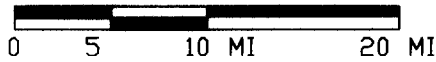
# WASCO COUNTY, OREGON



## **CLAIM OF BENEFICIAL USE MAP**

### **PLACE OF USE**

SCALE: 1" = 10 MILES



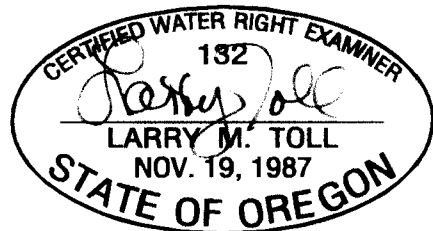
TRANSFER No. 8584

APPLICATION No. 27244

IN THE NAME OF:  
WASCO COUNTY

DATE: JULY 14, 2010

BY: **TENNESON ENGINEERING CORP.**  
3313 W. 2ND. STREET, SUITE 100  
THE DALLES, OREGON. 97058  
PH. 541-296-9177  
FAX 541-296-6657



EXPIRES: 06/30/2012

**NOTE:**

"THIS MAP IS NOT INTENDED TO PROVIDE DIMENSIONS OR LOCATIONS OF PROPERTY OWNERSHIP LINES."