

1716 COR
S1/2 of Sec 35

M007 NW 1/4
NE 1/4 NW 1/4

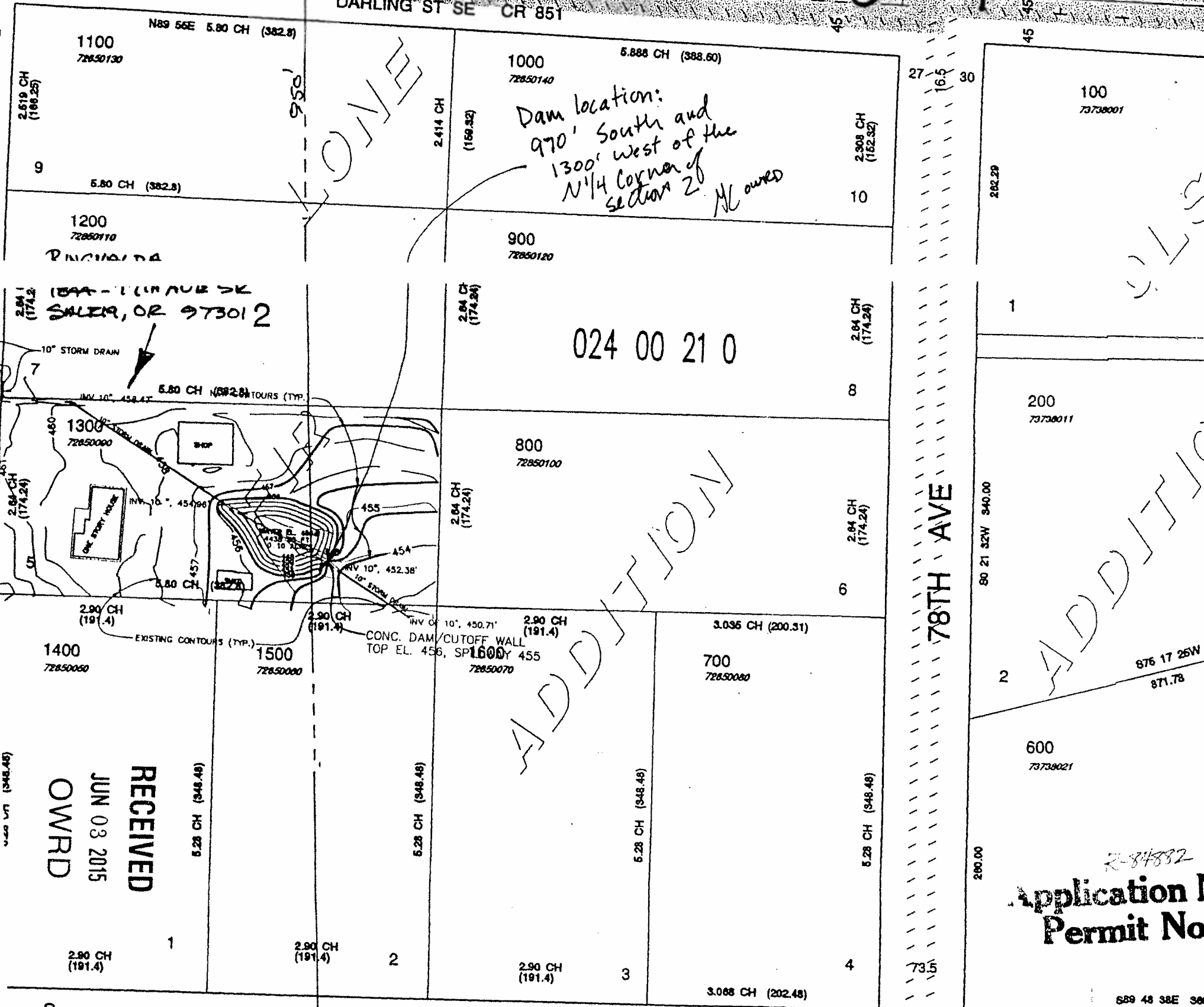
1320'

CENTER OF RESERVOIR IS:
1320' WEST AND 950' SOUTH AND
20' WEST OF THE N 1/4 COR. OF S2, T8S, R2W, WM.
IN MARION COUNTY, OREGON

SEE MAP 07 2W 35C

OLD WORK COPY 1/10/02

DARLING ST SE CR 851



OWNER

*Dam location:
970' South and
1300' West of the
N 1/4 Corner of
Section 20
MC owned*

024 00 21 0

ADDITION

78TH AVE

MACLEAY ROAD

NW 1/4 116 1/4 NE 1/4 NW 1/4

RECEIVED
JUN 03 2015
OWRD

Application 1
Permit No

ADDITION