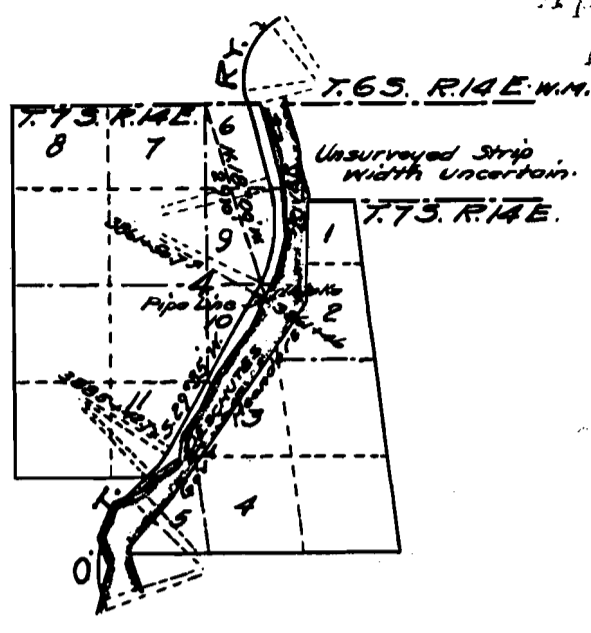


RECEIVED  
AUG 31 1911

— NATHAN —  
WATER STATION.

SAL. FM. . OREGON.

Application No. 1672  
Permit No. 811



I, K. K. Kunev of Fallbridge, Washington, do hereby certify that this map was made from notes taken during an actual survey made under my immediate supervision on the 18<sup>th</sup> day of April, 1911, and that it correctly represents the works described in the accompanying application together with the location of streams in the immediate vicinity.

-----  
*K. K. Kunev*  
 Surveyor.

OREGON TRUNK RY.

MAP ACCOMPANYING APPLICATION FOR PERMIT TO APPROPRIATE WATER FROM DESCHUTES RIVER IN SEC. 4, T. 7 S. R. 14 E. W.M.

Office of Chief Engineer

Scale: 2 in. = 1 mi.

July 24<sup>th</sup> 1911.