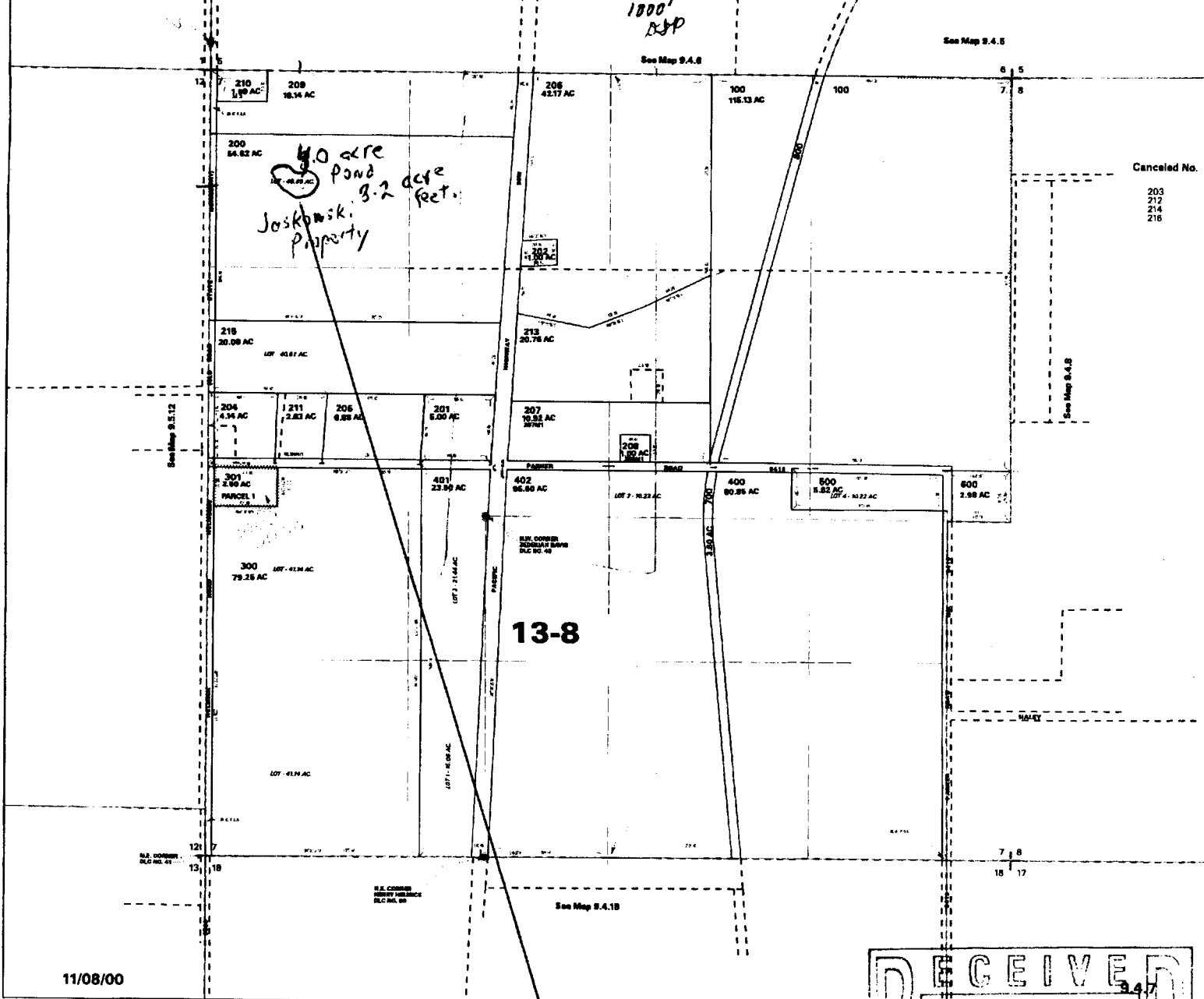


IMPORTANT
This Map for Assessment
and Taxation Purposes
ONLY

SEC. 7 T9S R4W WM
POLK COUNTY

9.4.7

Scale 1" = 400'
1800'
RSP



Cancelled No.
203
212
214
216

RECEIVED
AUG 17 2001
WATER RESOURCES DEPT
SALEM, OR

11/08/00

Application No. R84840
Permit No.



Pond #1 is located
750' S and 600' E — (200)
from section corner
6, 7, 11 and 12 -
Location of pond is the
~~SW~~ NW 1/4 NW 1/4 Sec 7
T9S R4W.

OSKOWSKI