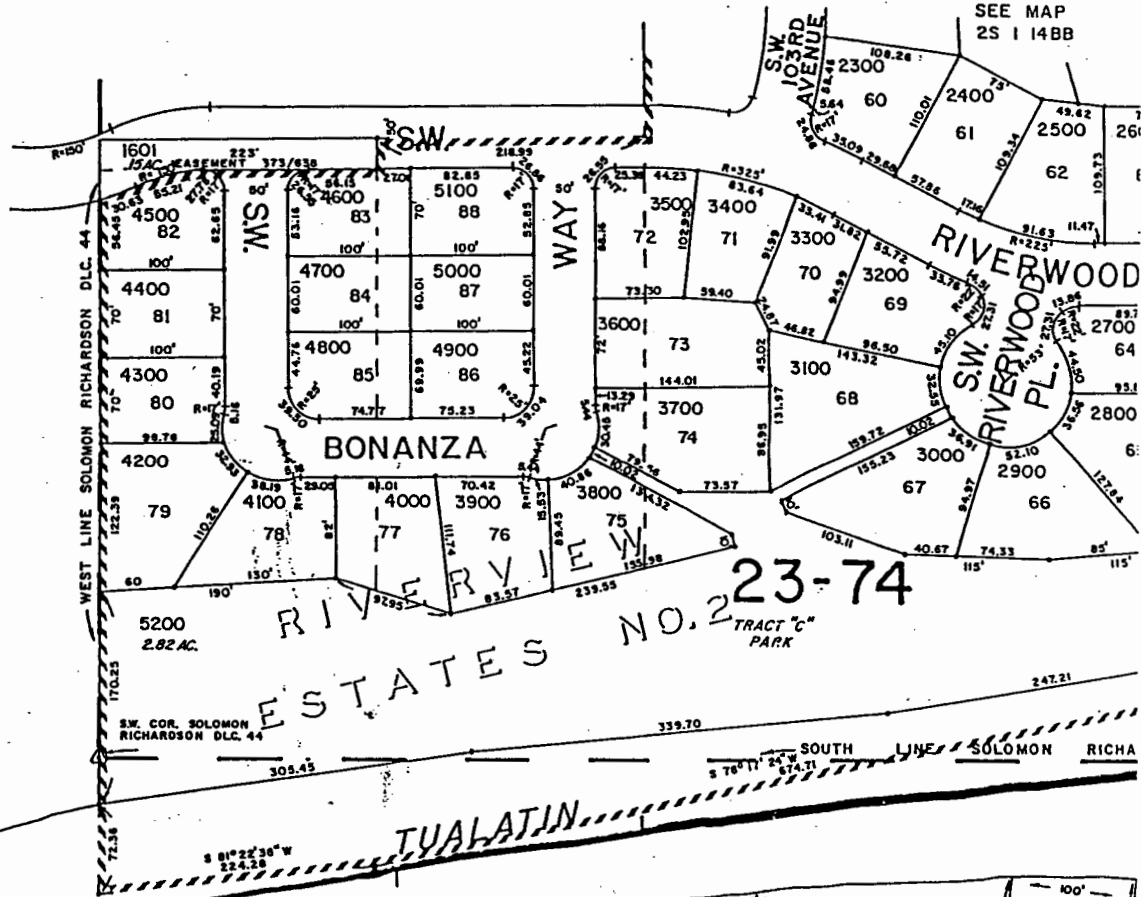


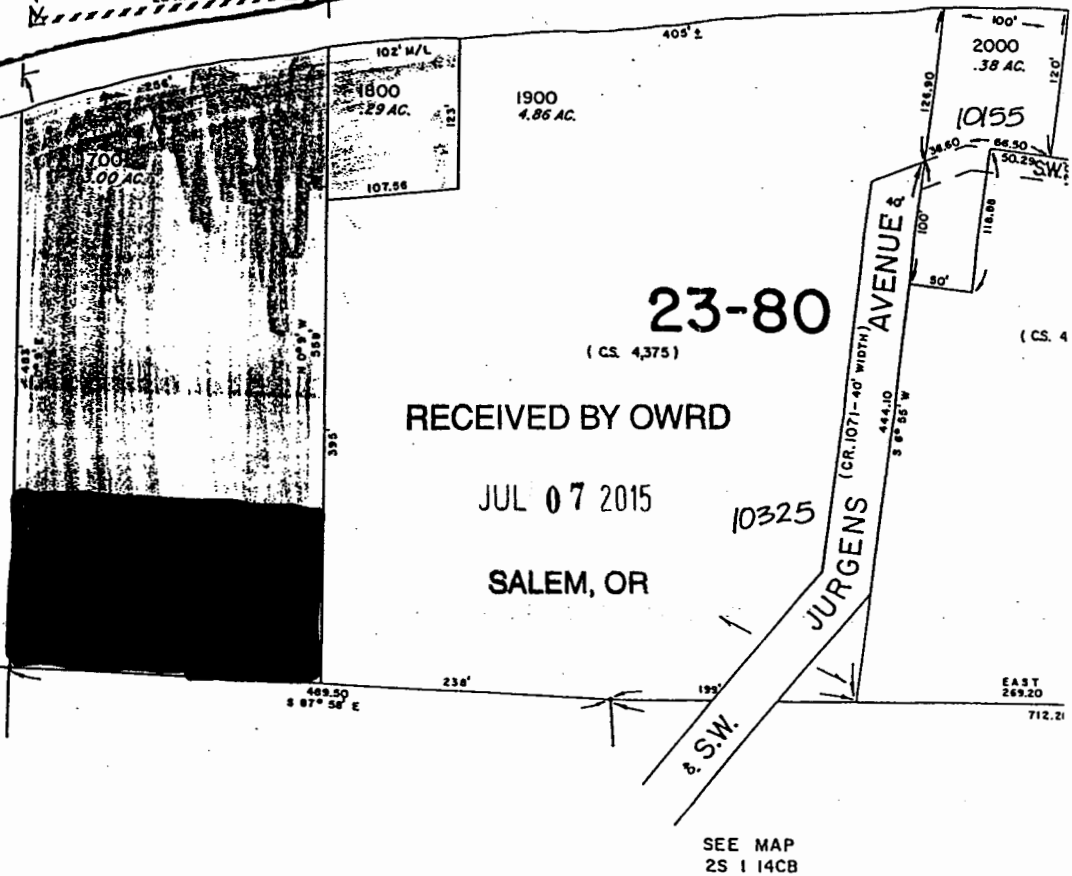
2S 1 14BC

SW 1/4 NW 1/4 SECTION 14 T2S R1W W.M.
WASHINGTON COUNTY OREGON

SCALE 1" = 100'



Wetland area w/pond →



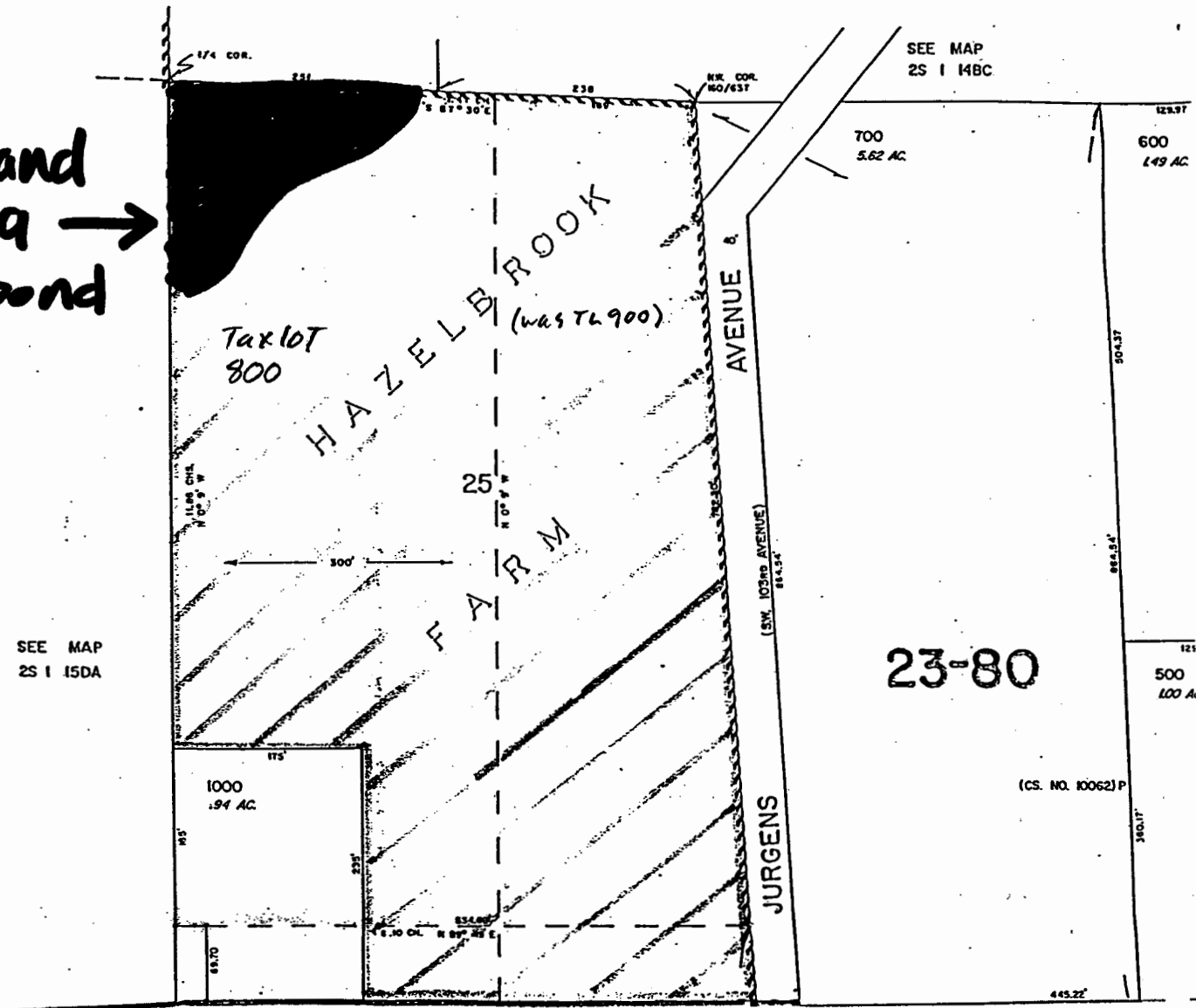
NW1/4 SW1/4 SECTION 14 T2S R1W W.M.

WASHINGTON COUNTY OREGON

SCALE 1"=100'

2S 1 14CB

Wetland
area →
w/pond



RECEIVED BY OWRD

JUL 07 2015

SALEM, OR