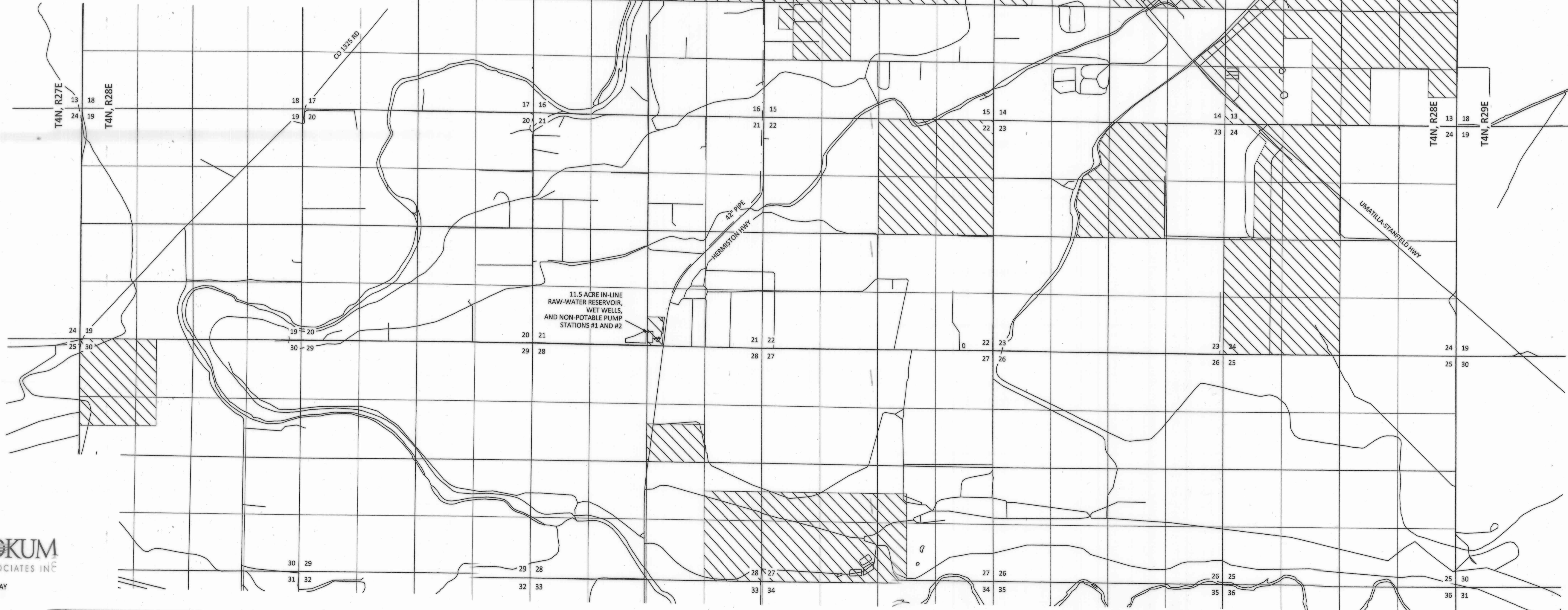
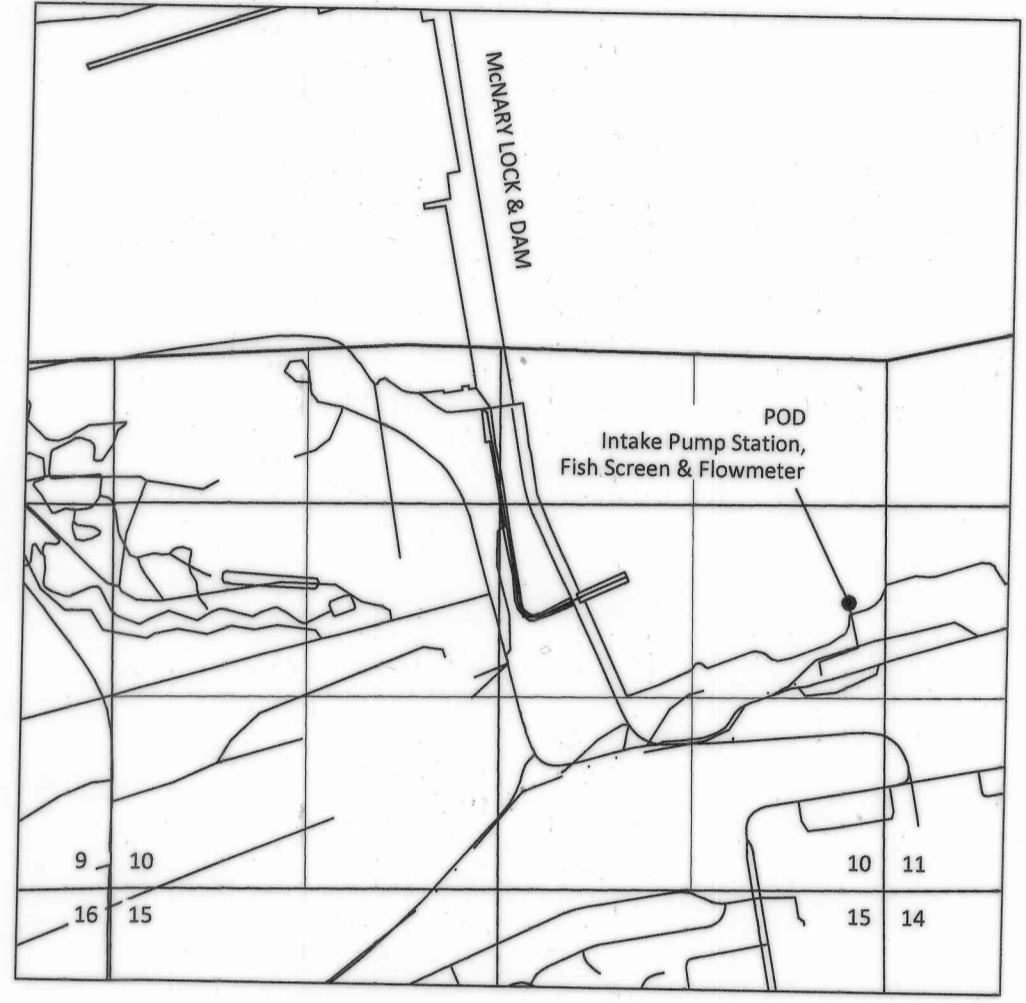


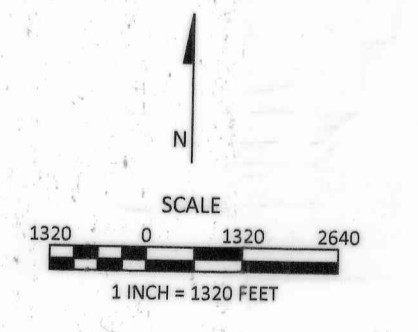
991

COBU MAP # 991

Sections 2 to 4, 8 to 16, 21 to 24, 27, 28 and 30
T4N, R28E, W.M.
&
Section 10, T5N, R28E, W.M.
Umatilla County, Oregon
Application R-58245, Permit S-49497
CLAIM OF BENEFICIAL USE MAP
Port of Umatilla



EXPLANATION
[Hatched Box] PLACE OF USE FOR APRIL 2016 PARTIAL PERFECTION
PRIORITY DATE: JANUARY 13, 1979
[Dot] POD (Intake Pump Station, Fish Screen & Flowmeter)
[Square] RESERVOIR
POD LOCATED: 1970 FT N and 280 FT W
From SE Corner of Section 10, T 5 N, R 28 E, W.M.
NOTES:
1. Site inspection conducted March 17, 2016.
2. 11.5 acre in-line raw-water reservoir, wet wells, and non-potable pump stations #1 and #2 details are shown on Figure 2 prepared by MWH.



K

SKOOKUM
WATER ASSOCIATES INC
1626 VICTORIAN WAY
EUGENE, OR 97401
(503) 319-8926

April 5, 2016
This map is not intended to provide legal dimensions or locations of property ownership lines.

Figure 1

RECEIVED
APR 08 2016
OWRD