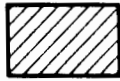


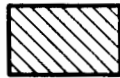
FINAL PROOF MAP FOR PERMIT G-13791 FOR L AND E BROWN FAMILY PARTNERSHIP T6N, R35E

LEGEND



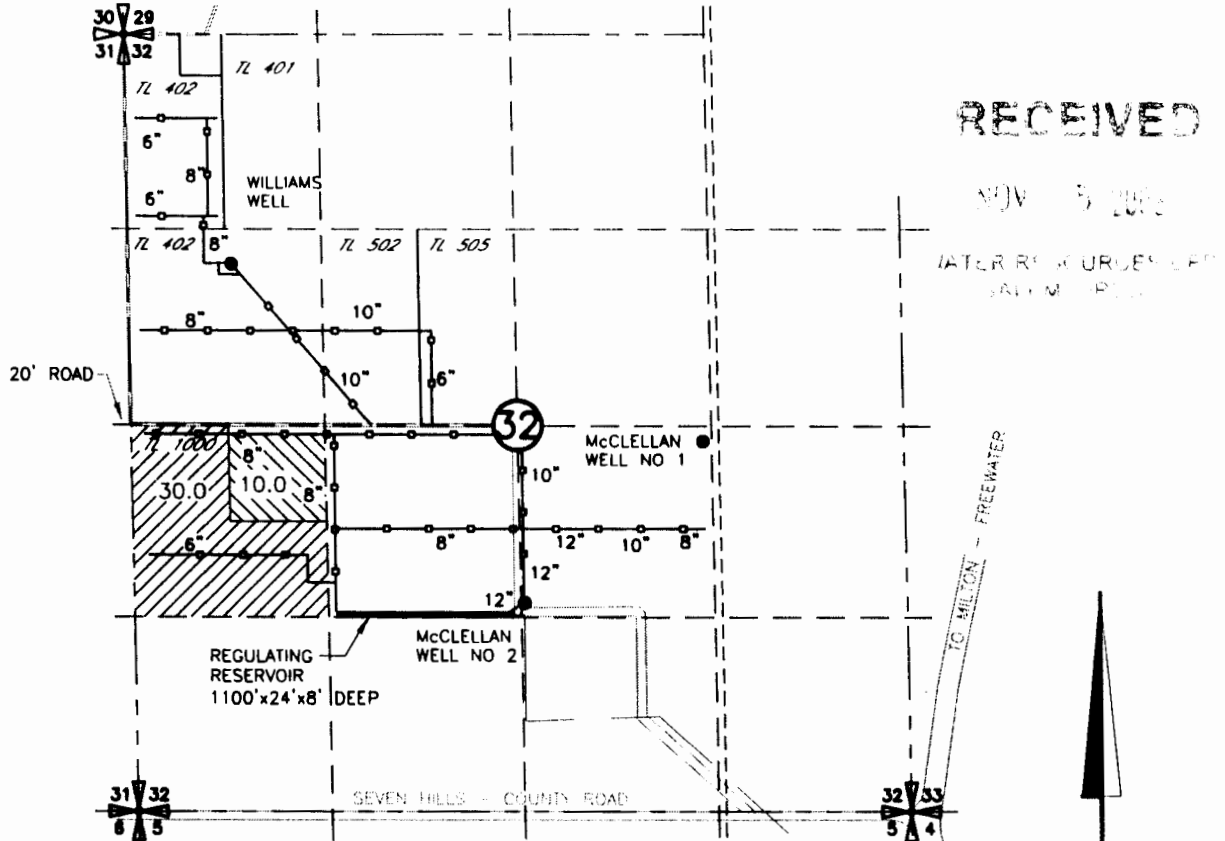
30.0 ACRES

PRIMARY
IRRIGATION



10.0 ACRES

SUPPLEMENTAL
IRRIGATION

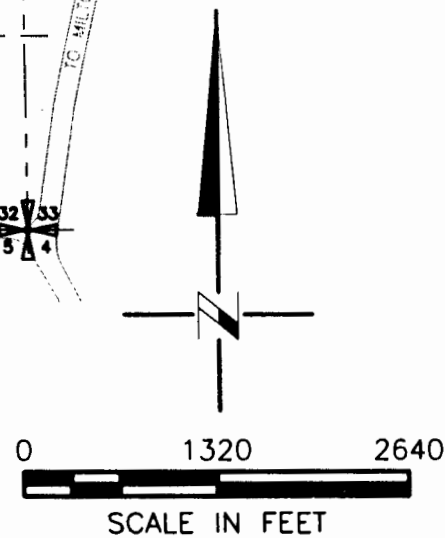
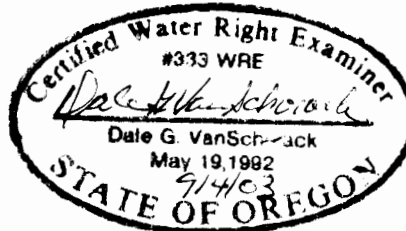


RECEIVED

NOV 5 2003

WATER RESOURCES DEPT
SALTMAR BLVD

POINTS OF APPROPRIATION
WILLIAMS WELL
LOCATED 1560' S AND 700' E FROM THE
NW CORNER OF SEC 32



DRAWING: H:\CAD\AG\3522\097\352297FP.DWG
PRINTED BY: rogerw on 09/04/03 08:05 AM
9/04/03

NOTE:
THE PURPOSE OF THIS MAP IS TO IDENTIFY THE APPROXIMATE LOCATION
OF THE WATER RIGHT. IT IS NOT INTENDED TO PROVIDE INFORMATION
RELATIVE TO THE LOCATION OF PROPERTY OWNERSHIP BOUNDARY LINES.