

RECEIVED

MAR 26 1997

T8N, R10W, W.M.
NE 1/4, NW 1/4, SECTION 9

WATER RESOURCES-DEPT.
SALEM, OREGON

POINT OF DIVERSION
PUMP LOCATION
ON PIER

TOP DOCK ELEV=13.25 NGVD

SUCTION PIPE

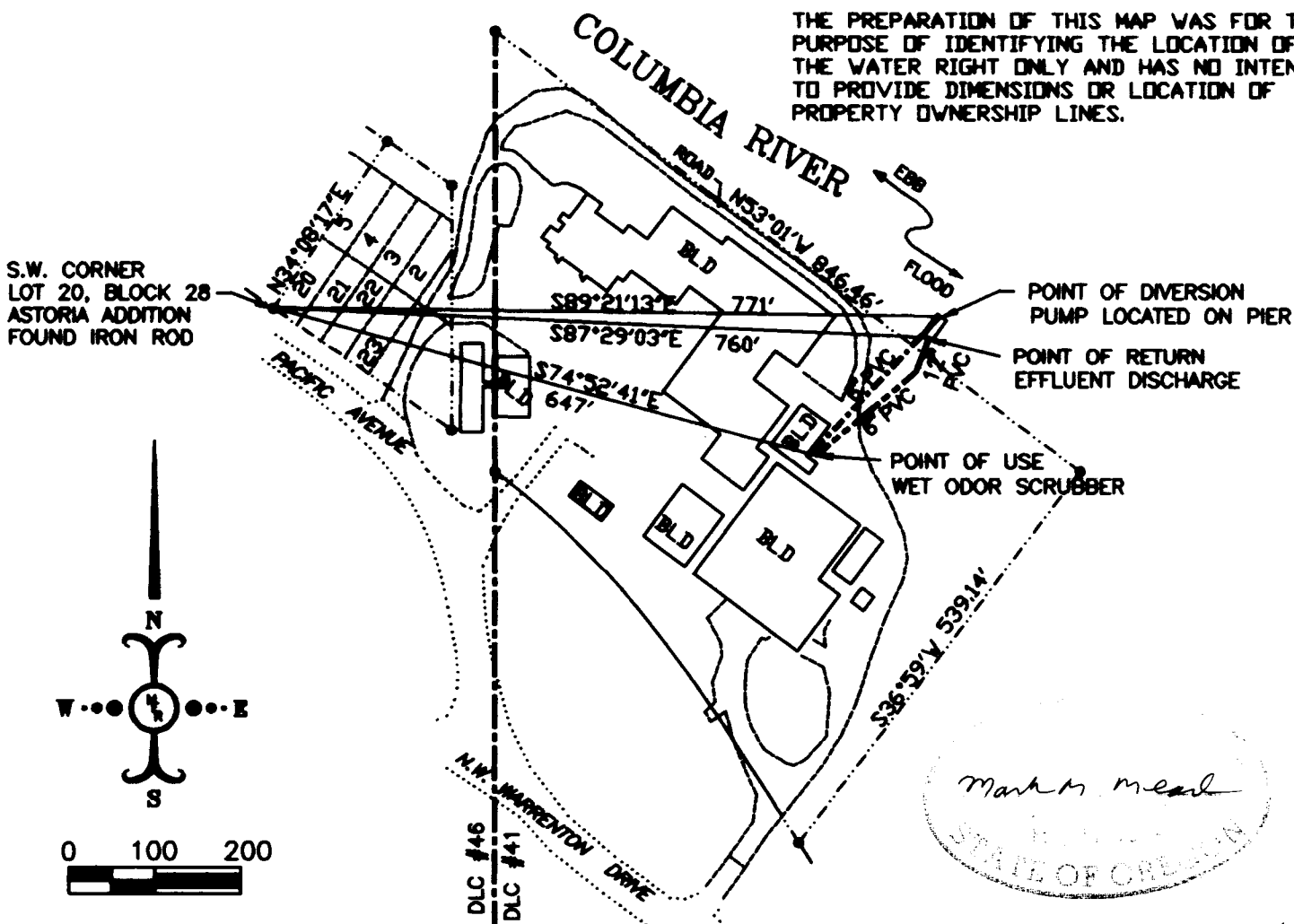
POINT OF RETURN
EFFLUENT DISCHARGE
UNDER PIER

RIVER BOTTOM

PIER
DOWNRIVER ELEVATION
NOT TO SCALE

TOP OF DOCK=16.85 MLLW=13.25 NGVD
MEAN HIGH WATER=7.60 MLLW=4.00 NGVD
MEAN LOW WATER=1.20 MLLW= -2.40 NGVD
MEAN LOWER LOW WATER=0.00 MLLW= -3.60 NGVD
MEASURED BOTTOM RIVER AT END DOCK= -6.2 MLLW= -9.8 NGVD

THE PREPARATION OF THIS MAP WAS FOR THE
PURPOSE OF IDENTIFYING THE LOCATION OF
THE WATER RIGHT ONLY AND HAS NO INTENT
TO PROVIDE DIMENSIONS OR LOCATION OF
PROPERTY OWNERSHIP LINES.

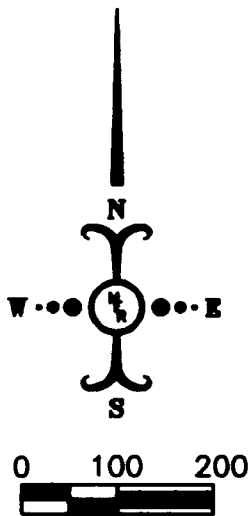


S.W. CORNER
LOT 20, BLOCK 28
ASTORIA ADDITION
FOUND IRON ROD

POINT OF DIVERSION
PUMP LOCATED ON PIER

POINT OF RETURN
EFFLUENT DISCHARGE

POINT OF USE
WET ODOR SCRUBBER



Mark M. Mead
 STATE OF OREGON

SCALE 1"=200'
COUNTY ASSESSOR MAP
#8-10-98, TAX LOT 200
ASSESSOR MAP SCALE 1"=200'

FINAL PROOF SURVEY
UNDER

APPLICATION No. 73238 PERMIT No. 51508
IN THE NAME OF

BIOPRODUCTS, INC.

SURVEYED 14 NOV. 1995, BY: M.M. MEAD

Mead
Engineering
Resources inc

3085 HAWKINS Rd., WARRENTON, OREGON 97146
Ph. 861-2604